

KD-Validated Anti-Malate dehydrogenase 2 Rabbit Monoclonal Antibody
Rabbit monoclonal antibody
Catalog # AGI1100**Specification**

KD-Validated Anti-Malate dehydrogenase 2 Rabbit Monoclonal Antibody - Product Information

Application	WB, FC, ICC
Primary Accession	P40926
Reactivity	Rat, Human, Mouse
Clonality	Monoclonal
Isotype	Rabbit IgG
Calculated MW	Predicted, 36 kDa, observed, 36 kDa kDa
Gene Name	MDH2
Aliases	MDH2; Malate Dehydrogenase 2; Malate Dehydrogenase 2, NAD (Mitochondrial); Malate Dehydrogenase, Mitochondrial; EC 1.1.1.37; Testicular Tissue Protein Li 120; MGC:3559; EC 1.1.1; EIEE51; DEE51; M-MDH; MOR1; MDH
Immunogen	A synthesized peptide derived from human MDH2

KD-Validated Anti-Malate dehydrogenase 2 Rabbit Monoclonal Antibody - Additional Information

Gene ID	4191
Other Names	
Malate dehydrogenase, mitochondrial, 1.1.1.37, MDH2	

KD-Validated Anti-Malate dehydrogenase 2 Rabbit Monoclonal Antibody - Protein Information**Name** MDH2**Cellular Location**

Mitochondrion matrix {ECO:0000250|UniProtKB:P04636}

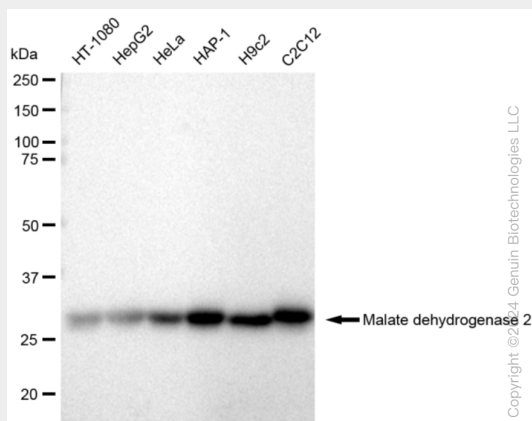
KD-Validated Anti-Malate dehydrogenase 2 Rabbit Monoclonal Antibody - Protocols

Provided below are standard protocols that you may find useful for product applications.

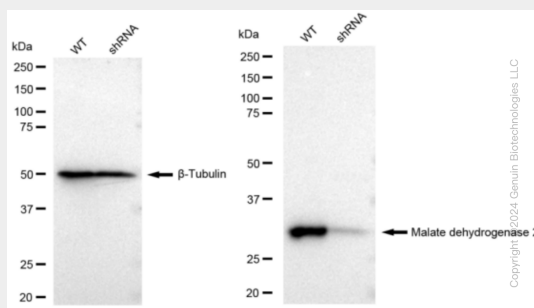
- [Western Blot](#)
- [Blocking Peptides](#)
- [Dot Blot](#)
- [Immunohistochemistry](#)

- [Immunofluorescence](#)
- [Immunoprecipitation](#)
- [Flow Cytometry](#)
- [Cell Culture](#)

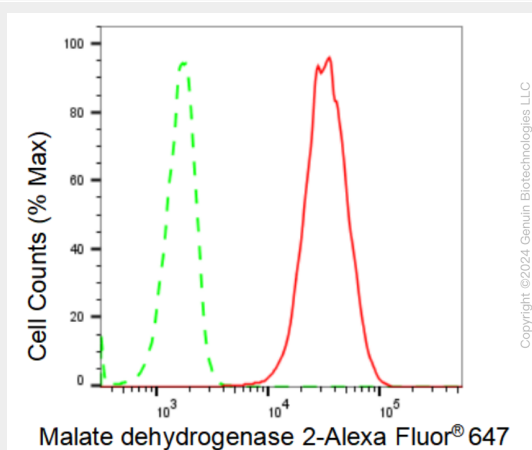
KD-Validated Anti-Malate dehydrogenase 2 Rabbit Monoclonal Antibody - Images



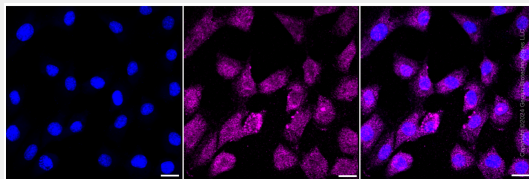
Western blotting analysis using anti-Malate dehydrogenase 2 antibody (Cat#AGI1100). Total cell lysates (30 µg) from various cell lines were loaded and separated by SDS-PAGE. The blot was incubated with anti-Malate dehydrogenase 2 antibody (Cat#AGI1100, 1:5,000) and HRP-conjugated goat anti-rabbit secondary antibody respectively.



Western blotting analysis using anti-Malate dehydrogenase 2 antibody (Cat#AGI1100). Malate dehydrogenase 2 expression in wild type (WT) and malate dehydrogenase 2 shRNA knockdown (KD) HeLa cells with 30 µg of total cell lysates. β-Tubulin serves as a loading control. The blot was incubated with anti-Malate dehydrogenase 2 antibody (Cat#AGI1100, 1:5,000) and HRP-conjugated goat anti-rabbit secondary antibody respectively.



Flow cytometric analysis of Malate dehydrogenase 2 expression in C2C12 cells using Malate dehydrogenase 2 antibody (Cat#AGI1100, 1:2,000). Green, isotype control; red, Malate dehydrogenase 2.



Immunocytochemical staining of C2C12 cells with Malate dehydrogenase 2 antibody (Cat#AGI1100, 1:1,000). Nuclei were stained blue with DAPI; Malate dehydrogenase 2 was stained magenta with Alexa Fluor® 647. Images were taken using Leica stellaris 5. Protein abundance based on laser Intensity and smart gain: Low. Scale bar: 20 μ m.