

KD-Validated Anti-Transcription elongation factor A1 Rabbit Monoclonal Antibody
Rabbit monoclonal antibody
Catalog # AGI1101**Specification****KD-Validated Anti-Transcription elongation factor A1 Rabbit Monoclonal Antibody - Product Information**

Application	WB, FC, ICC
Primary Accession	P23193
Reactivity	Rat, Human, Mouse
Clonality	Monoclonal
Isotype	Rabbit IgG
Calculated MW	Predicted, 34 kDa, observed, 34 kDa
Gene Name	TCEA1
Aliases	TCEA1; Transcription Elongation Factor A1; TFIIS; GTF2S; TF2S; SII; Transcription Elongation Factor S-II Protein 1; Transcription Elongation Factor A Protein 1; Transcription Elongation Factor A (SII), 1; Transcription Elongation Factor TFIIS.O; Transcription Factor IIS; TCEA; Epididymis Secretory Sperm Binding Protein
Immunogen	A synthesized peptide derived from human TCEA1

KD-Validated Anti-Transcription elongation factor A1 Rabbit Monoclonal Antibody - Additional Information

Gene ID	6917
Other Names	
Transcription elongation factor A protein 1, Transcription elongation factor S-II protein 1, Transcription elongation factor TFIIS.o, TCEA1, GTF2S, TFIIS	

KD-Validated Anti-Transcription elongation factor A1 Rabbit Monoclonal Antibody - Protein Information**Name** TCEA1**Synonyms** GTF2S, TFIIS**Function**

Necessary for efficient RNA polymerase II transcription elongation past template-encoded arresting sites. The arresting sites in DNA have the property of trapping a certain fraction of elongating RNA polymerases that pass through, resulting in locked ternary complexes. Cleavage of the nascent transcript by S-II allows the resumption of elongation from the new 3'-terminus.

Cellular Location

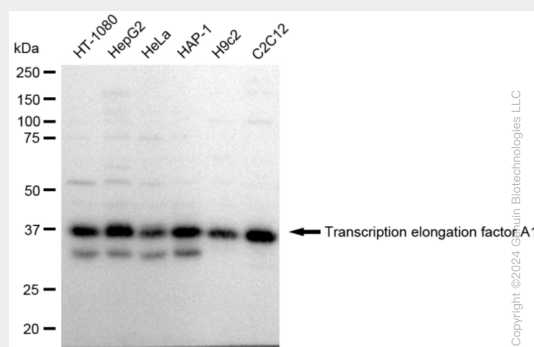
Nucleus.

KD-Validated Anti-Transcription elongation factor A1 Rabbit Monoclonal Antibody - Protocols

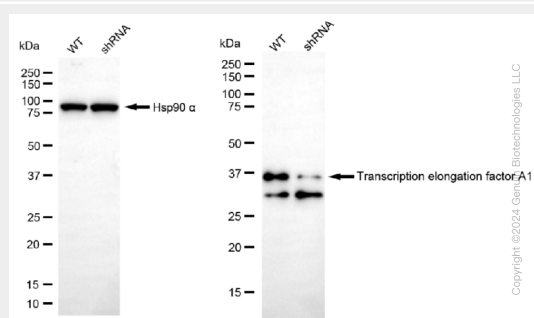
Provided below are standard protocols that you may find useful for product applications.

- [Western Blot](#)
- [Blocking Peptides](#)
- [Dot Blot](#)
- [Immunohistochemistry](#)
- [Immunofluorescence](#)
- [Immunoprecipitation](#)
- [Flow Cytometry](#)
- [Cell Culture](#)

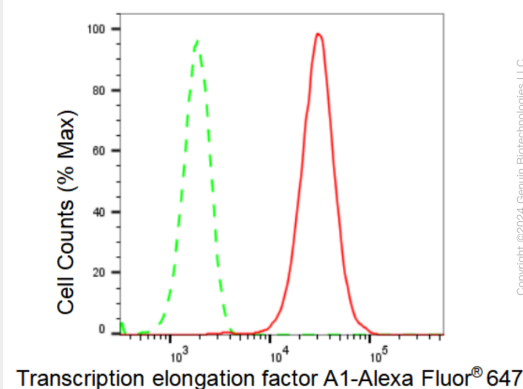
KD-Validated Anti-Transcription elongation factor A1 Rabbit Monoclonal Antibody - Images



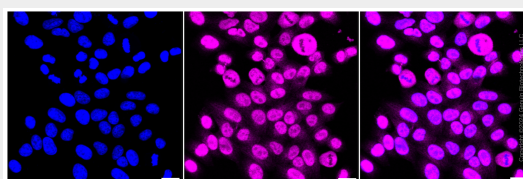
Western blotting analysis using anti-Transcription elongation factor A1 antibody (Cat#AGI1101). Total cell lysates (30 µg) from various cell lines were loaded and separated by SDS-PAGE. The blot was incubated with anti-Transcription elongation factor A1 antibody (Cat#AGI1101, 1:5,000) and HRP-conjugated goat anti-rabbit secondary antibody respectively.



Western blotting analysis using anti-Transcription elongation factor A1 antibody (Cat#AGI1101). Transcription elongation factor A1 expression in wild type (WT) and transcription elongation factor A1 shRNA knockdown (KD) HeLa cells with 30 µg of total cell lysates. β-Tubulin serves as a loading control. The blot was incubated with anti-Transcription elongation factor A1 antibody (Cat#AGI1101, 1:5,000) and HRP-conjugated goat anti-rabbit secondary antibody respectively.



Flow cytometric analysis of Transcription elongation factor A1 expression in HepG2 cells using Transcription elongation factor A1 antibody (Cat#AGI1101, 1:2,000). Green, isotype control; red, Transcription elongation factor A1.



Immunocytochemical staining of HepG2 cells with Transcription elongation factor A1 antibody (Cat#AGI1101, 1:1,000). Nuclei were stained blue with DAPI; Transcription elongation factor A1 was stained magenta with Alexa Fluor® 647. Images were taken using Leica stellaris 5. Protein abundance based on laser Intensity and smart gain: High. Scale bar: 20 µm.