

KD-Validated Anti-PDIA4 Rabbit Monoclonal Antibody
Rabbit monoclonal antibody
Catalog # AGI1108**Specification**

KD-Validated Anti-PDIA4 Rabbit Monoclonal Antibody - Product Information

Application	WB
Primary Accession	P13667
Reactivity	Human
Clonality	Monoclonal
Isotype	Rabbit IgG
Calculated MW	Predicted, 73 kDa, observed, 73 kDa kDa
Gene Name	PDIA4
Aliases	PDIA4; Protein Disulfide Isomerase Family A Member 4; ERP70; ERP72; Endoplasmic Reticulum Resident Protein 70; Endoplasmic Reticulum Resident Protein 72; Protein Disulfide Isomerase-Associated 4; Protein Disulfide-Isomerase A4; ER Protein 70; ER Protein 72; EC 5.3.4.1; ERp-72; Protein Disulfide Isomerase Related Protein (Calcium-Binding Protein, Intestinal-Related); Protein Disulfide Isomerase Family A, Member 4; Testicular Tissue Protein Li 137; ERp70; ERp72
Immunogen	A synthesized peptide derived from human ERp72

KD-Validated Anti-PDIA4 Rabbit Monoclonal Antibody - Additional Information

Gene ID	9601
Other Names	Protein disulfide-isomerase A4, 5.3.4.1, Endoplasmic reticulum resident protein 70, ER protein 70, ERp70, Endoplasmic reticulum resident protein 72, ER protein 72, ERp-72, ERp72, PDIA4, ERP70, ERP72

KD-Validated Anti-PDIA4 Rabbit Monoclonal Antibody - Protein Information**Name** PDIA4**Synonyms** ERP70, ERP72**Cellular Location**

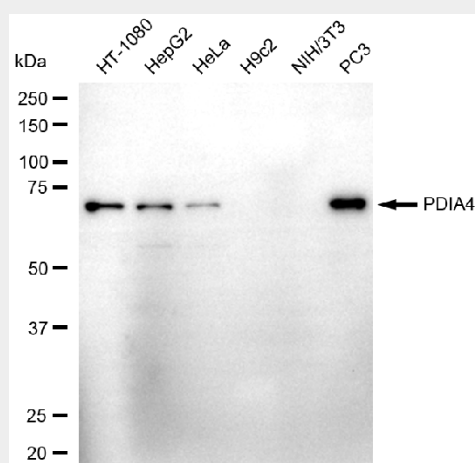
Endoplasmic reticulum lumen. Melanosome. Note=Identified by mass spectrometry in melanosome fractions from stage I to stage IV (PubMed:17081065)

KD-Validated Anti-PDIA4 Rabbit Monoclonal Antibody - Protocols

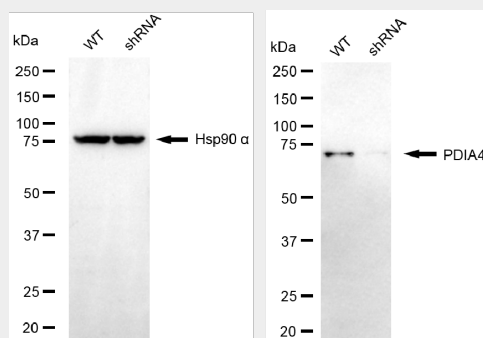
Provided below are standard protocols that you may find useful for product applications.

- [Western Blot](#)
- [Blocking Peptides](#)
- [Dot Blot](#)
- [Immunohistochemistry](#)
- [Immunofluorescence](#)
- [Immunoprecipitation](#)
- [Flow Cytometry](#)
- [Cell Culture](#)

KD-Validated Anti-PDIA4 Rabbit Monoclonal Antibody - Images



Western blotting analysis using anti-PDIA4 antibody (Cat#AGI1108). Total cell lysates (30 µg) from various cell lines were loaded and separated by SDS-PAGE. The blot was incubated with anti-PDIA4 antibody (Cat#AGI1108, 1:5,000) and HRP-conjugated goat anti-rabbit secondary antibody respectively.



Western blotting analysis using anti-PDIA4 antibody (Cat#AGI1108). PDIA4 expression in wild type (WT) and PDIA4 shRNA knockdown (KD) HeLa cells with 30 µg of total cell lysates. Hsp90 α serves as a loading control. The blot was incubated with anti-PDIA4 antibody (Cat#AGI1108, 1:5,000) and HRP-conjugated goat anti-rabbit secondary antibody respectively.