

**KD-Validated Anti-Adenylosuccinate Lyase Mouse Monoclonal Antibody**  
**Mouse monoclonal antibody**  
**Catalog # AGI1110****Specification****KD-Validated Anti-Adenylosuccinate Lyase Mouse Monoclonal Antibody - Product Information**

Application	WB, FC
Primary Accession	<a href="#">P30566</a>
Reactivity	Rat, Human
Clonality	Monoclonal
Isotype	Mouse IgG1
Calculated MW	Predicted, 55 kDa, observed, 48 kDa
Gene Name	ADSL
Aliases	ADSL; Adenylosuccinate Lyase; Adenylosuccinase; EC 4.3.2.2; AMPS; ASL; EC 4.3.2; ASASE; ASase
Immunogen	Recombinant protein of human ADSL

**KD-Validated Anti-Adenylosuccinate Lyase Mouse Monoclonal Antibody - Additional Information**

Gene ID	158
<b>Other Names</b>	
Adenylosuccinate lyase, ADSL, ASL, 4.3.2.2, Adenylosuccinase, ASase, ADSL, AMPS	

**KD-Validated Anti-Adenylosuccinate Lyase Mouse Monoclonal Antibody - Protein Information****Name** ADSL**Synonyms** AMPS**Function**

Catalyzes two non-sequential steps in de novo AMP synthesis: converts (S)-2-(5-amino-1-(5-phospho-D-ribosyl)imidazole-4-carboxamido)succinate (SAICAR) to fumarate plus 5-amino-1-(5-phospho-D- ribosyl)imidazole-4-carboxamide, and thereby also contributes to de novo IMP synthesis, and converts succinyladenosine monophosphate (SAMP) to AMP and fumarate.

**Tissue Location**

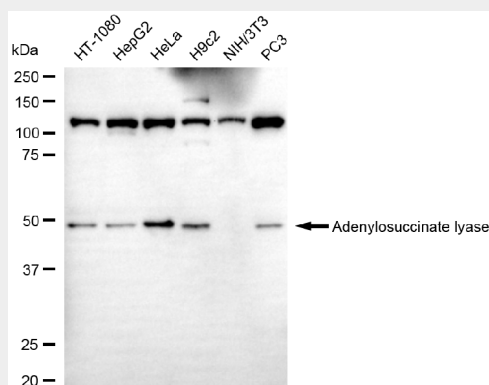
Ubiquitously expressed. Both isoforms are produced by all tissues. Isoform 2 is 10-fold less abundant than isoform 1

**KD-Validated Anti-Adenylosuccinate Lyase Mouse Monoclonal Antibody - Protocols**

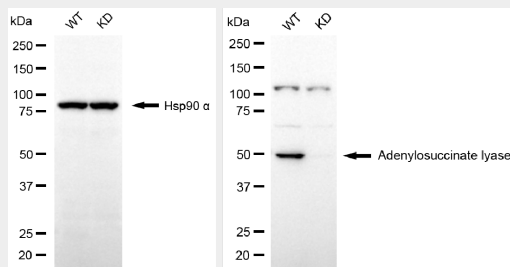
Provided below are standard protocols that you may find useful for product applications.

- [Western Blot](#)
- [Blocking Peptides](#)
- [Dot Blot](#)
- [Immunohistochemistry](#)
- [Immunofluorescence](#)
- [Immunoprecipitation](#)
- [Flow Cytometry](#)
- [Cell Culture](#)

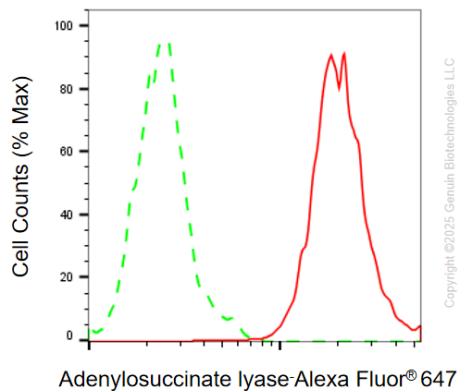
## KD-Validated Anti-Adenylosuccinate Lyase Mouse Monoclonal Antibody - Images



Western blotting analysis using anti-adenylosuccinate lyase antibody (Cat#AGI1110). Total cell lysates (30 µg) from various cell lines were loaded and separated by SDS-PAGE. The blot was incubated with anti-adenylosuccinate lyase antibody (Cat#AGI1110, 1:5,000) and HRP-conjugated goat anti-mouse secondary antibody respectively.



Western blotting analysis using anti-adenylosuccinate lyase antibody (Cat#AGI1110). Adenylosuccinate lyase expression in wild type (WT) and adenylosuccinate lyase (ADSL) knockdown (KD) HSHC cells with 20 µg of total cell lysates. Hsp90 α serves as a loading control. The blot was incubated with anti-adenylosuccinate lyase antibody (Cat#AGI1110, 1:5,000) and HRP-conjugated goat anti-mouse secondary antibody respectively.



Flow cytometric analysis of Adenylosuccinate lyase expression in HeLa cells using anti-Adenylosuccinate lyase antibody (Cat# AGI1110, 1:2,000). Green, isotype control; red, Adenylosuccinate lyase.