

KD-Validated Anti-PACSIN3 Mouse Monoclonal Antibody
Mouse monoclonal antibody
Catalog # AGI1112**Specification**

KD-Validated Anti-PACSIN3 Mouse Monoclonal Antibody - Product Information

Application	WB, FC
Primary Accession	Q9UKS6
Reactivity	Rat, Human, Mouse
Clonality	Monoclonal
Isotype	Mouse IgG2a
Calculated MW	Predicted, 48 kDa, observed, 48 kDa
Gene Name	KDa PACSIN3
Aliases	PACSIN3; Protein Kinase C And Casein Kinase Substrate In Neurons 3; SDPIII; Protein Kinase C And Casein Kinase Substrate In Neurons Protein 3; SH3 Domain-Containing Protein 6511; Syndapin III
Immunogen	Recombinant protein of human PACSIN3

KD-Validated Anti-PACSIN3 Mouse Monoclonal Antibody - Additional Information

Gene ID	29763
Other Names	
Protein kinase C and casein kinase substrate in neurons protein 3, SH3 domain-containing protein 6511, PACSIN3	

KD-Validated Anti-PACSIN3 Mouse Monoclonal Antibody - Protein Information**Name** PACSIN3**Function**

Plays a role in endocytosis and regulates internalization of plasma membrane proteins. Overexpression impairs internalization of SLC2A1/GLUT1 and TRPV4 and increases the levels of SLC2A1/GLUT1 and TRPV4 at the cell membrane. Inhibits the TRPV4 calcium channel activity (By similarity).

Cellular Location

Cytoplasm. Cell membrane; Peripheral membrane protein; Cytoplasmic side. Note=Detected at the inner aspect of the plasma membrane in myotubes.

Tissue Location

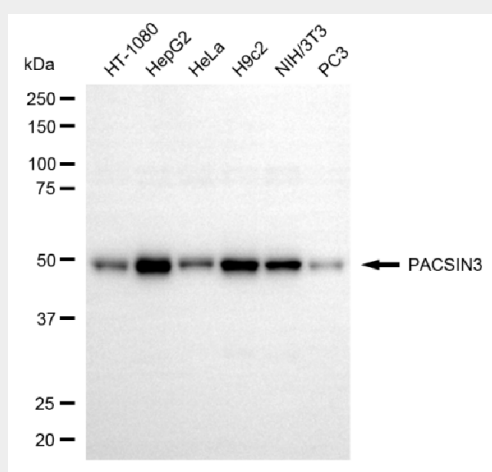
Widely expressed, with highest levels in heart and skeletal muscle, intermediate levels in placenta, liver and pancreas, and very low levels in brain, lung and kidney

KD-Validated Anti-PACSIN3 Mouse Monoclonal Antibody - Protocols

Provided below are standard protocols that you may find useful for product applications.

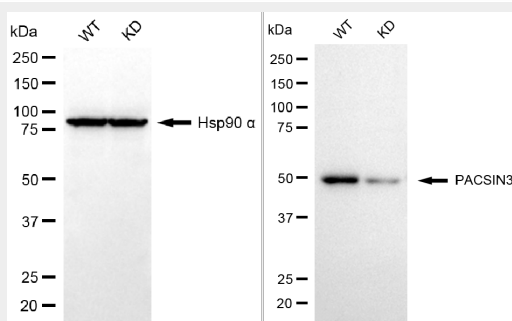
- [Western Blot](#)
- [Blocking Peptides](#)
- [Dot Blot](#)
- [Immunohistochemistry](#)
- [Immunofluorescence](#)
- [Immunoprecipitation](#)
- [Flow Cytometry](#)
- [Cell Culture](#)

KD-Validated Anti-PACSIN3 Mouse Monoclonal Antibody - Images



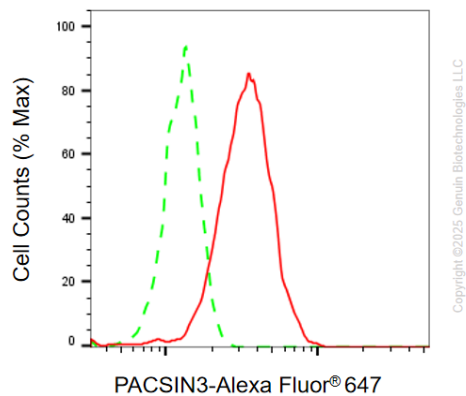
Copyright ©2025 Genuin Biotechnologies LLC

Western blotting analysis using anti-PACSIN3 antibody (Cat#AGI1112). Total cell lysates (30 µg) from various cell lines were loaded and separated by SDS-PAGE. The blot was incubated with anti-PACSIN3 antibody (Cat#AGI1112, 1:2,500) and HRP-conjugated goat anti-mouse secondary antibody respectively.



Copyright ©2025 Genuin Biotechnologies LLC

Western blotting analysis using anti-PACSIN3 antibody (Cat#AGI1112). PACSIN3 expression in wild type (WT) and PACSIN3 knockdown (KD) HSHC cells with 20 µg of total cell lysates. Hsp90 α serves as a loading control. The blot was incubated with anti-PACSIN3 antibody (Cat#AGI1112, 1:2,500) and HRP-conjugated goat anti-mouse secondary antibody respectively.



Flow cytometric analysis of PACSIN3 expression in HepG2 cells using anti-PACSIN3 antibody (Cat# AGI1112, 1:2,000). Green, isotype control; red, PACSIN3.