

**KD-Validated Anti-PACSIN3 Mouse Monoclonal Antibody**  
**Mouse monoclonal antibody**  
**Catalog # AGI1113****Specification**

---

**KD-Validated Anti-PACSIN3 Mouse Monoclonal Antibody - Product Information**

Application	WB, FC
Primary Accession	<a href="#">Q9UKS6</a>
Reactivity	Rat, Human, Mouse
Clonality	Monoclonal
Isotype	Mouse IgG1
Calculated MW	Predicted, 48 kDa, observed, 48 kDa
Gene Name	KDa PACSIN3
Aliases	PACSIN3; Protein Kinase C And Casein Kinase Substrate In Neurons 3; SDPIII; Protein Kinase C And Casein Kinase Substrate In Neurons Protein 3; SH3 Domain-Containing Protein 6511; Syndapin III
Immunogen	Recombinant protein of human PACSIN3

**KD-Validated Anti-PACSIN3 Mouse Monoclonal Antibody - Additional Information**

Gene ID	29763
<b>Other Names</b>	
Protein kinase C and casein kinase substrate in neurons protein 3, SH3 domain-containing protein 6511, PACSIN3	

**KD-Validated Anti-PACSIN3 Mouse Monoclonal Antibody - Protein Information****Name** PACSIN3**Function**

Plays a role in endocytosis and regulates internalization of plasma membrane proteins. Overexpression impairs internalization of SLC2A1/GLUT1 and TRPV4 and increases the levels of SLC2A1/GLUT1 and TRPV4 at the cell membrane. Inhibits the TRPV4 calcium channel activity (By similarity).

**Cellular Location**

Cytoplasm. Cell membrane; Peripheral membrane protein; Cytoplasmic side. Note=Detected at the inner aspect of the plasma membrane in myotubes.

**Tissue Location**

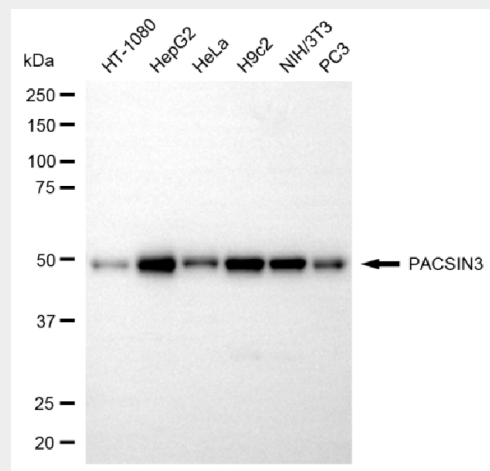
Widely expressed, with highest levels in heart and skeletal muscle, intermediate levels in placenta, liver and pancreas, and very low levels in brain, lung and kidney

## KD-Validated Anti-PACSIN3 Mouse Monoclonal Antibody - Protocols

Provided below are standard protocols that you may find useful for product applications.

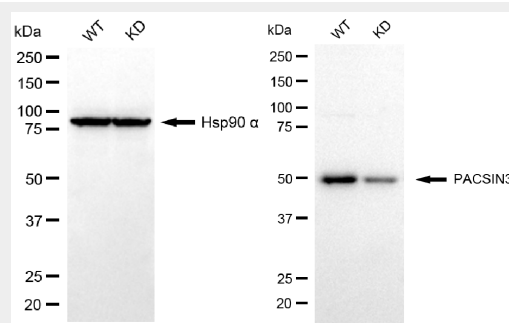
- [Western Blot](#)
- [Blocking Peptides](#)
- [Dot Blot](#)
- [Immunohistochemistry](#)
- [Immunofluorescence](#)
- [Immunoprecipitation](#)
- [Flow Cytometry](#)
- [Cell Culture](#)

## KD-Validated Anti-PACSIN3 Mouse Monoclonal Antibody - Images



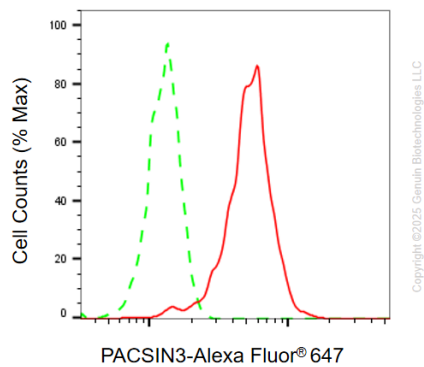
Copyright ©2025 Genuin Biotechnologies LLC

Western blotting analysis using anti-PACSIN3 antibody (Cat#AGI1113). Total cell lysates (30 µg) from various cell lines were loaded and separated by SDS-PAGE. The blot was incubated with anti-PACSIN3 antibody (Cat#AGI1113, 1:5,000) and HRP-conjugated goat anti-mouse secondary antibody respectively.



Copyright ©2025 Genuin Biotechnologies LLC

Western blotting analysis using anti-PACSIN3 antibody (Cat#AGI1113). PACSIN3 expression in wild type (WT) and PACSIN3 knockdown (KD) HSHC cells with 20 µg of total cell lysates. Hsp90 α serves as a loading control. The blot was incubated with anti-PACSIN3 antibody (Cat#AGI1113, 1:5,000) and HRP-conjugated goat anti-mouse secondary antibody respectively.



Flow cytometric analysis of PACSIN3 expression in HepG2 cells using anti-PACSIN3 antibody (Cat# AGI1113, 1:2,000). Green, isotype control; red, PACSIN3.