

**KD-Validated Anti-TXNDC5 Mouse Monoclonal Antibody**  
**Mouse monoclonal antibody**  
**Catalog # AGI1115****Specification****KD-Validated Anti-TXNDC5 Mouse Monoclonal Antibody - Product Information**

Application	WB, FC
Primary Accession	<a href="#">Q8NBS9</a>
Reactivity	Human
Clonality	Monoclonal
Isotype	Mouse IgG1
Calculated MW	Predicted, 48 kDa, observed, 48 kDa
Gene Name	KDa TXNDC5
Aliases	TXNDC5; Thioredoxin Domain Containing 5; ERp46; EndoPDI; PDIA15; Hsc-2; Protein Disulfide Isomerase Family A, Member 15; Endoplasmic Reticulum Resident Protein 46; Thioredoxin Domain-Containing Protein 5; Thioredoxin-Like Protein P46; ER Protein 46; FLJ21353; FLJ90810; MGC3178; Thioredoxin Domain Containing 5 (Endoplasmic Reticulum); Epididymis Secretory Spermatogenesis Binding Protein; Endothelial Protein Disulfide Isomerase; Endoplasmic Reticulum Protein ERp46; Thioredoxin Related Protein; EC 1.8.4.-; EC 5.3.4.1; UNQ364; STRF8; TLP46; HCC2 Recombinant protein of human TXNDC5
Immunogen	

**KD-Validated Anti-TXNDC5 Mouse Monoclonal Antibody - Additional Information**

Gene ID	81567
Other Names	Thioredoxin domain-containing protein 5, Thioredoxin-like protein p46, TXNDC5 ( <a href="http://www.genenames.org/cgi-bin/gene_symbol_report?hgnc_id=21073" target="_blank">http://www.genenames.org/cgi-bin/gene_symbol_report?hgnc_id=21073</a> ), TLP46

**KD-Validated Anti-TXNDC5 Mouse Monoclonal Antibody - Protein Information****Name** TXNDC5 ([HGNC:21073](#))**Synonyms** TLP46**Function**

Protein disulfide isomerase of the endoplasmic reticulum lumen involved in the formation of disulfide bonds in proteins. Can reduce insulin disulfide bonds.

**Cellular Location**

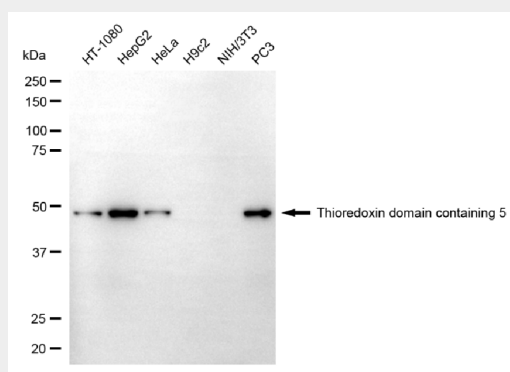
Endoplasmic reticulum lumen {ECO:0000250|UniProtKB:Q91W90,  
ECO:0000255|PROSITE-ProRule:PRU10138}

## KD-Validated Anti-TXNDC5 Mouse Monoclonal Antibody - Protocols

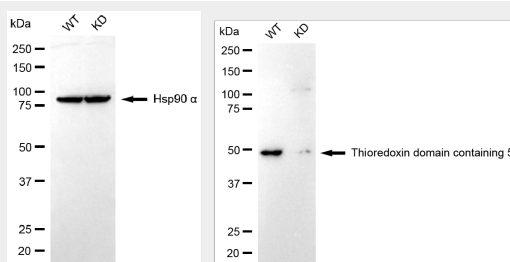
Provided below are standard protocols that you may find useful for product applications.

- [Western Blot](#)
- [Blocking Peptides](#)
- [Dot Blot](#)
- [Immunohistochemistry](#)
- [Immunofluorescence](#)
- [Immunoprecipitation](#)
- [Flow Cytometry](#)
- [Cell Culture](#)

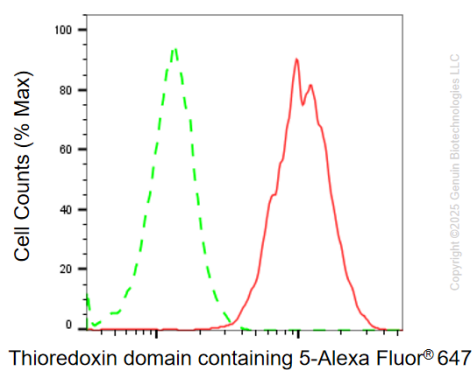
## KD-Validated Anti-TXNDC5 Mouse Monoclonal Antibody - Images



Western blotting analysis using anti-thioredoxin domain containing 5 antibody (Cat#AGI1115). Total cell lysates (30 µg) from various cell lines were loaded and separated by SDS-PAGE. The blot was incubated with anti-thioredoxin domain containing 5 antibody (Cat#AGI1115, 1:5,000) and HRP-conjugated goat anti-mouse secondary antibody respectively.



Western blotting analysis using anti-thioredoxin domain containing 5 antibody (Cat#AGI1115). Thioredoxin domain containing 5 expression in wild type (WT) and thioredoxin domain containing 5 (TXNDC5) knockdown (KD) HSHC cells with 30 µg of total cell lysates. Hsp90 α serves as a loading control. The blot was incubated with anti-thioredoxin domain containing 5 antibody (Cat#AGI1115, 1:2,500) and HRP-conjugated goat anti-mouse secondary antibody respectively.



Flow cytometric analysis of Thioredoxin domain containing 5 expression in HT-1080 cells using anti-Thioredoxin domain containing 5 antibody (Cat# AGI1115, 1:2,000). Green, isotype control; red, Thioredoxin domain containing 5.