

KD Validated Anti-L1 cell adhesion molecule Rabbit Monoclonal Antibody
Rabbit monoclonal antibody
Catalog # AGI1120**Specification****KD Validated Anti-L1 cell adhesion molecule Rabbit Monoclonal Antibody - Product Information**

Application	WB, FC
Primary Accession	P32004
Reactivity	Human
Clonality	Monoclonal
Isotype	Rabbit IgG
Calculated MW	Predicted, 140 kDa, observed, 85, 230 kDa
Gene Name	L1CAM
Aliases	L1CAM; L1 Cell Adhesion Molecule; NCAM-L1; CAML1; Neural Cell Adhesion Molecule L1; CD171; MIC5; Antigen Identified By Monoclonal Antibody R1; N-CAM-L1; HSAS1; HSAS; MASA; SPG1; S10; CD171 Antigen; N-CAML1; HYCX
Immunogen	A synthesized peptide derived from human L1CAM

KD Validated Anti-L1 cell adhesion molecule Rabbit Monoclonal Antibody - Additional Information

Gene ID	3897
Other Names	
Neural cell adhesion molecule L1, N-CAM-L1, NCAM-L1, CD171, L1CAM, CAML1, MIC5	

KD Validated Anti-L1 cell adhesion molecule Rabbit Monoclonal Antibody - Protein Information**Name** L1CAM**Synonyms** CAML1, MIC5**Function**

Neural cell adhesion molecule involved in the dynamics of cell adhesion and in the generation of transmembrane signals at tyrosine kinase receptors. During brain development, critical in multiple processes, including neuronal migration, axonal growth and fasciculation, and synaptogenesis. In the mature brain, plays a role in the dynamics of neuronal structure and function, including synaptic plasticity.

Cellular Location

Cell membrane; Single-pass type I membrane protein {ECO:0000250|UniProtKB:Q05695}. Cell projection, growth cone {ECO:0000250|UniProtKB:Q05695}. Cell projection, axon. Cell projection,

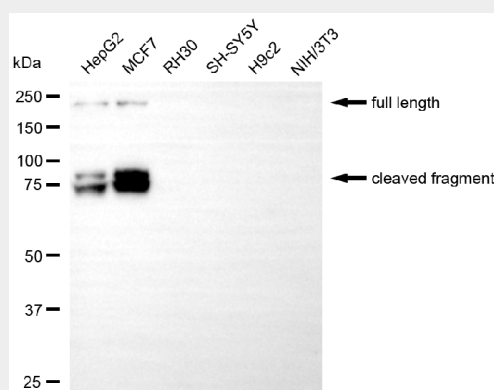
dendrite Note=Colocalized with SHTN1 in close apposition with actin filaments in filopodia and lamellipodia of axonal growth cones of hippocampal neurons (By similarity). In neurons, detected predominantly in axons and cell body, weak localization to dendrites (PubMed:20621658) {ECO:0000250|UniProtKB:Q05695, ECO:0000269|PubMed:20621658}

KD Validated Anti-L1 cell adhesion molecule Rabbit Monoclonal Antibody - Protocols

Provided below are standard protocols that you may find useful for product applications.

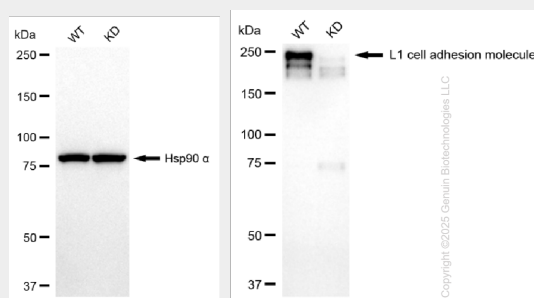
- [Western Blot](#)
- [Blocking Peptides](#)
- [Dot Blot](#)
- [Immunohistochemistry](#)
- [Immunofluorescence](#)
- [Immunoprecipitation](#)
- [Flow Cytometry](#)
- [Cell Culture](#)

KD Validated Anti-L1 cell adhesion molecule Rabbit Monoclonal Antibody - Images



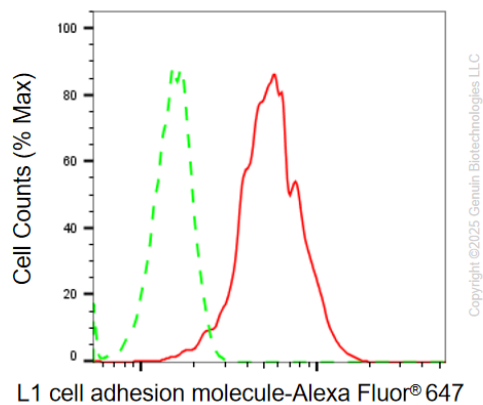
Copyright ©2025 Genuin Biotechnologies LLC

Western blotting analysis using anti-L1 cell adhesion molecule antibody (Cat#AGI1120). Total cell lysates (30 µg) from various cell lines were loaded and separated by SDS-PAGE. The blot was incubated with anti-L1 cell adhesion molecule antibody (Cat#AGI1120, 1:5,000) and HRP-conjugated goat anti-rabbit secondary antibody respectively.



Copyright ©2025 Genuin Biotechnologies LLC

Western blotting analysis using anti-L1 cell adhesion molecule antibody (Cat#AGI1120). L1 cell adhesion molecule expression in wild type (WT) and L1 cell adhesion molecule (L1CAM) knockdown (KD) HSHC cells with 20 µg of total cell lysates. Hsp90 α serves as a loading control. The blot was incubated with anti-L1 cell adhesion molecule antibody (Cat#AGI1120, 1:5,000) and HRP-conjugated goat anti-rabbit secondary antibody respectively.



Flow cytometric analysis of L1 cell adhesion molecule expression in HepG2 cells using L1 cell adhesion molecule antibody (Cat#AGI1120, 1:2,000). Green, isotype control; red, L1 cell adhesion molecule.