

KD-Validated Anti-Keratin 7 Rabbit Monoclonal Antibody
Rabbit monoclonal antibody
Catalog # AGI1121**Specification**

KD-Validated Anti-Keratin 7 Rabbit Monoclonal Antibody - Product Information

Application	WB, FC, ICC
Primary Accession	P08729
Reactivity	Human
Clonality	Monoclonal
Isotype	Rabbit IgG
Calculated MW	Predicted, 51 kDa , observed, 51 kDa
Gene Name	KRT7
Aliases	Keratin 7; CK-7; SCL; K7; Keratin, Type II Cytoskeletal 7; Sarcolectin 2; K2C7 2; CK7 2; Keratin, 55K Type II; Cytoskeletal; Type-II Keratin Kb7; Keratin 7, Type II; Cytokeratin 7; Keratin, Simple Epithelial Type I, K7; Type II Mesothelial Keratin K7; Cytokeratin-7; Keratin-7
Immunogen	A synthesized peptide derived from human Cytokeratin 7

KD-Validated Anti-Keratin 7 Rabbit Monoclonal Antibody - Additional Information

Gene ID	3855
Other Names	
Keratin, type II cytoskeletal 7, Cytokeratin-7, CK-7, Keratin-7, K7, Sarcolectin, Type-II keratin Kb7, KRT7, SCL	

KD-Validated Anti-Keratin 7 Rabbit Monoclonal Antibody - Protein Information**Name** KRT7**Synonyms** SCL**Function**

Blocks interferon-dependent interphase and stimulates DNA synthesis in cells. Involved in the translational regulation of the human papillomavirus type 16 E7 mRNA (HPV16 E7).

Cellular Location

Cytoplasm.

Tissue Location

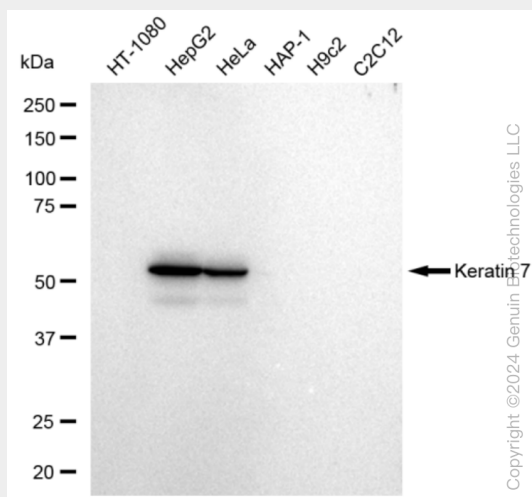
Expressed in cultured epidermal, bronchial and mesothelial cells but absent in colon, ectocervix and liver. Observed throughout the glandular cells in the junction between stomach and esophagus but is absent in the esophagus.

KD-Validated Anti-Keratin 7 Rabbit Monoclonal Antibody - Protocols

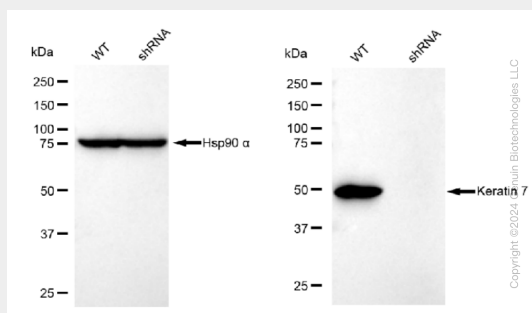
Provided below are standard protocols that you may find useful for product applications.

- [Western Blot](#)
- [Blocking Peptides](#)
- [Dot Blot](#)
- [Immunohistochemistry](#)
- [Immunofluorescence](#)
- [Immunoprecipitation](#)
- [Flow Cytometry](#)
- [Cell Culture](#)

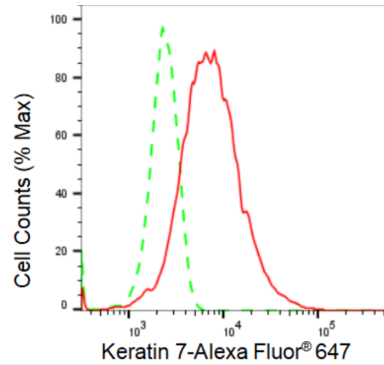
KD-Validated Anti-Keratin 7 Rabbit Monoclonal Antibody - Images



Western blotting analysis using anti-Keratin 7 antibody (Cat#AGI1121). Total cell lysates (30 µg) from various cell lines were loaded and separated by SDS-PAGE. The blot was incubated with anti-Keratin 7 antibody (Cat#AGI1121, 1:10,000) and HRP-conjugated goat anti-rabbit secondary antibody respectively.

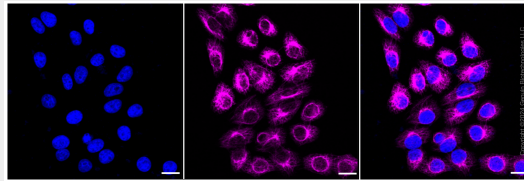


Western blotting analysis using anti-Keratin 7 antibody (Cat#AGI1121). Keratin 7 expression in wild type (WT) and Keratin 7 shRNA knockdown (KD) HeLa cells with 30 µg of total cell lysates. Hsp90 α serves as a loading control. The blot was incubated with anti-Keratin 7 antibody (Cat#AGI1121, 1:5,000) and HRP-conjugated goat anti-rabbit secondary antibody respectively.



Copyright ©2024 Genun Biotechnologies LLC

Flow cytometric analysis of Keratin 7 expression in HepG2 cells using Keratin 7 antibody (Cat#AGI1121, 1:2,000). Green, isotype control; red, Keratin 7.



Copyright ©2024 Genun Biotechnologies LLC

Immunocytochemical staining of HepG2 cells with Keratin 7 antibody (Cat#AGI1121, 1:1,000). Nuclei were stained blue with DAPI; Keratin 7 was stained magenta with Alexa Fluor® 647. Images were taken using Leica stellaris 5. Protein abundance based on laser Intensity and smart gain: High. Scale bar: 20 μ m.