

KD-Validated Anti-Mannose Receptor (CD206) Rabbit Monoclonal Antibody
Rabbit monoclonal antibody
Catalog # AGI1126**Specification****KD-Validated Anti-Mannose Receptor (CD206) Rabbit Monoclonal Antibody - Product Information**

Application	WB, FC, ICC
Primary Accession	P22897
Reactivity	Rat, Human, Mouse
Clonality	Monoclonal
Isotype	Rabbit IgG
Calculated MW	Predicted, 166 kDa; observed, 166 kDa
Gene Name	KDa
Aliases	MRC1 MRC1; Mannose Receptor C-Type 1; CLEC13DL; CLEC13D; BA541I19.1; MRC1L1; CD206; Macrophage Mannose Receptor 1-Like Protein 1; C-Type Lectin Domain Family 13 Member D; Mannose Receptor, C Type 1-Like 1; Macrophage Mannose Receptor ; Human Mannose Receptor; MMR; HMR; C-Type Lectin Domain Family 13 Member D-Like; Macrophage Mannose Receptor; Mannose Receptor, C Type 1; CD206 Antigen
Immunogen	A synthesized peptide derived from human MRC1

KD-Validated Anti-Mannose Receptor (CD206) Rabbit Monoclonal Antibody - Additional Information

Gene ID	4360
Other Names	
Macrophage mannose receptor 1, MMR, C-type lectin domain family 13 member D, C-type lectin domain family 13 member D-like, Human mannose receptor, hMR, Macrophage mannose receptor 1-like protein 1, CD206, MRC1, CLEC13D, CLEC13DL, MRC1L1	

KD-Validated Anti-Mannose Receptor (CD206) Rabbit Monoclonal Antibody - Protein Information**Name** MRC1**Synonyms** CLEC13D, CLEC13DL, MRC1L1**Function**

Mediates the endocytosis of glycoproteins by macrophages. Binds both sulfated and non-sulfated polysaccharide chains. (Microbial infection) Acts as a receptor for Dengue virus envelope protein E.

Cellular Location

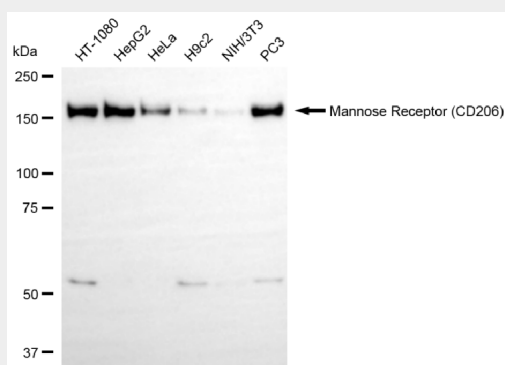
Endosome membrane; Single-pass type I membrane protein. Cell membrane; Single-pass type I membrane protein

KD-Validated Anti-Mannose Receptor (CD206) Rabbit Monoclonal Antibody - Protocols

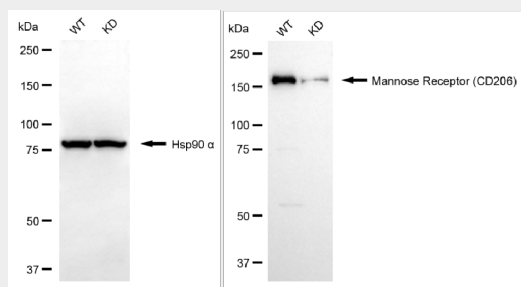
Provided below are standard protocols that you may find useful for product applications.

- [Western Blot](#)
- [Blocking Peptides](#)
- [Dot Blot](#)
- [Immunohistochemistry](#)
- [Immunofluorescence](#)
- [Immunoprecipitation](#)
- [Flow Cytometry](#)
- [Cell Culture](#)

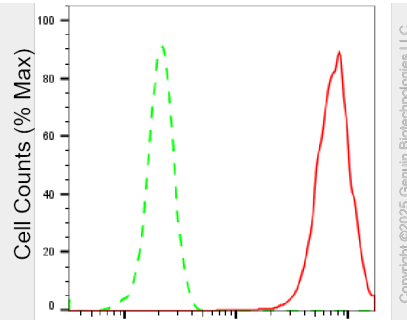
KD-Validated Anti-Mannose Receptor (CD206) Rabbit Monoclonal Antibody - Images



Western blotting analysis using anti-mannose receptor (CD206) antibody (Cat#AGI1126). Total cell lysates (30 µg) from various cell lines were loaded and separated by SDS-PAGE. The blot was incubated with anti-mannose receptor (CD206) antibody (Cat#AGI1126, 1:5,000) and HRP-conjugated goat anti rabbit secondary antibody respectively.



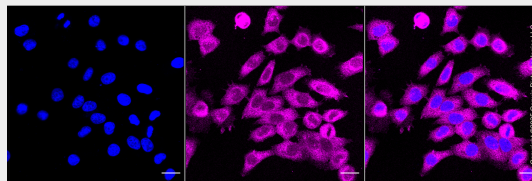
Western blotting analysis using anti-mannose receptor (CD206) antibody (Cat#AGI1126). Mannose receptor (CD206) expression in wild-type (WT) and MRC1 knockdown (KD) HeLa cells with 20 µg of total cell lysates. Hsp90 α serves as a loading control. The blot was incubated with anti-mannose receptor (CD206) antibody (Cat#AGI1126, 1:5,000) and HRP-conjugated goat anti-rabbit secondary antibody respectively.



Copyright ©2025 Genuin Biotechnologies LLC

Mannose Receptor (CD206)-Alexa Fluor® 647

Flow cytometric analysis of Mannose Receptor (CD206) expression in HepG2 cells using Mannose Receptor (CD206) antibody (Cat#AGI1126, 1:2,000). Green, isotype control; red, Mannose Receptor (CD206).



Immunocytochemical staining of HepG2 cells with Mannose Receptor (CD206) antibody (Cat#AGI1126, 1:1,000). Nuclei were stained blue with DAPI; Mannose Receptor (CD206) was stained magenta with Alexa Fluor® 647. Images were taken using Leica stellaris 5. Protein abundance based on laser Intensity and smart gain: High. Scale bar, 20 µm.