

KD-Validated Anti-KLF4 Rabbit Monoclonal Antibody
Rabbit monoclonal antibody
Catalog # AGI1129**Specification****KD-Validated Anti-KLF4 Rabbit Monoclonal Antibody - Product Information**

Application	WB, FC, ICC
Primary Accession	O43474
Reactivity	Rat, Human, Mouse
Clonality	Monoclonal
Isotype	Rabbit IgG
Calculated MW	Predicted, 55 kDa; observed, 54 kDa
Gene Name	KDa KLF4
Aliases	KLF Transcription Factor 4; GKLF; EZF; Epithelial Zinc Finger Protein EZF; Gut-Enriched Krueppel-Like Factor; Kruppel-Like Factor 4 (Gut); Gut Kruppel-Like Factor; Krueppel-Like Factor 4; Kruppel Like Factor 4; Endothelial Kruppel-Like Zinc Finger Protein
Immunogen	A synthesized peptide derived from human KLF4

KD-Validated Anti-KLF4 Rabbit Monoclonal Antibody - Additional Information

Gene ID	9314
Other Names	
Krueppel-like factor 4, Epithelial zinc finger protein EZF, Gut-enriched krueppel-like factor, KLF4 (http://www.genenames.org/cgi-bin/gene_symbol_report?hgnc_id=6348) target="_blank">HGNC:6348), EZF, GKLF	

KD-Validated Anti-KLF4 Rabbit Monoclonal Antibody - Protein Information**Name** KLF4 ([HGNC:6348](#))**Synonyms** EZF, GKLF**Function**

Transcription factor; can act both as activator and as repressor. Binds the 5'-CACCC-3' core sequence. Binds to the promoter region of its own gene and can activate its own transcription. Regulates the expression of key transcription factors during embryonic development. Plays an important role in maintaining embryonic stem cells, and in preventing their differentiation. Required for establishing the barrier function of the skin and for postnatal maturation and maintenance of the ocular surface. Involved in the differentiation of epithelial cells and may also function in skeletal and kidney development. Contributes to the down-regulation of p53/TP53 transcription.

Cellular Location

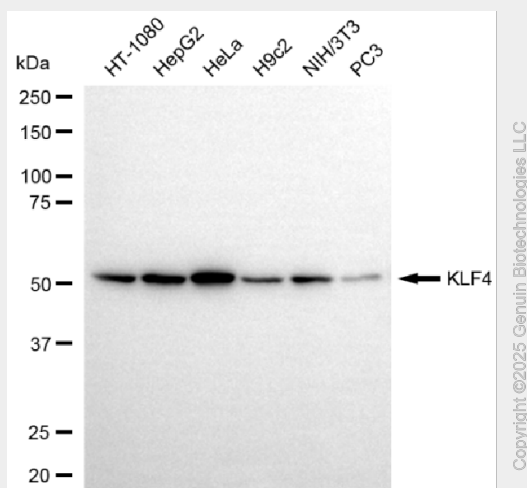
Nucleus {ECO:0000250|UniProtKB:Q60793}. Cytoplasm {ECO:0000250|UniProtKB:Q60793}

KD-Validated Anti-KLF4 Rabbit Monoclonal Antibody - Protocols

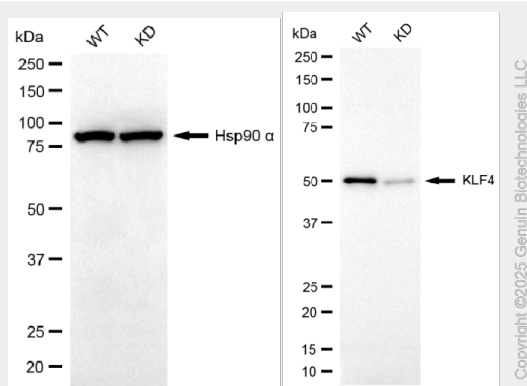
Provided below are standard protocols that you may find useful for product applications.

- [Western Blot](#)
- [Blocking Peptides](#)
- [Dot Blot](#)
- [Immunohistochemistry](#)
- [Immunofluorescence](#)
- [Immunoprecipitation](#)
- [Flow Cytometry](#)
- [Cell Culture](#)

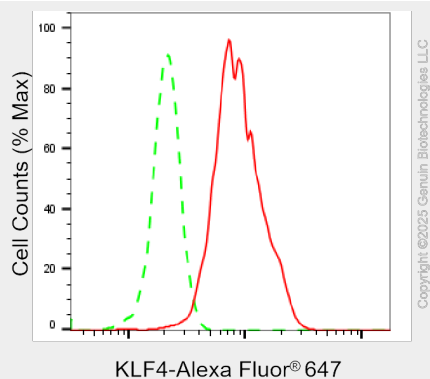
KD-Validated Anti-KLF4 Rabbit Monoclonal Antibody - Images



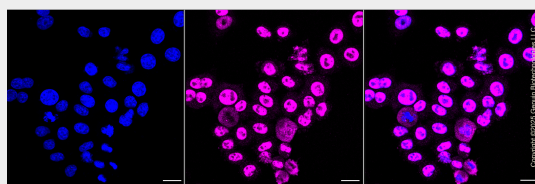
Western blotting analysis using anti-KLF4 antibody (Cat#AGI1129). Total cell lysates (30 µg) from various cell lines were loaded and separated by SDS-PAGE. The blot was incubated with anti-KLF4 antibody (Cat#AGI1129, 1:5,000) and HRP-conjugated goat anti-rabbit secondary antibody respectively.



Western blotting analysis using anti-KLF4 antibody (Cat#AGI1129). KLF4 expression in wild type (WT) and KLF4 knockdown (KD) HeLa cells with 20 µg of total cell lysates. Hsp90 α serves as a loading control. The blot was incubated with anti-KLF4 antibody (Cat#AGI1129, 1:5,000) and HRP-conjugated goat anti-rabbit secondary antibody respectively.



Flow cytometric analysis of KLF4 expression in HepG2 cells using KLF4 antibody (Cat#AGI1129, 1:2,000). Green, isotype control; red, KLF4.



Immunocytochemical staining of C2C12 cells with anti-KLF4 antibody (Cat#AGI1129, 1:1,000). Nuclei were stained blue with DAPI; KLF4 was stained magenta with Alexa Fluor® 647. Images were taken using Leica stellaris 5. Protein abundance based on laser Intensity and smart gain: Medium. Scale bar, 20 μ m.