

**KD-Validated Anti-MAP2K3 Rabbit Monoclonal Antibody**  
**Rabbit monoclonal antibody**  
**Catalog # AGI1133****Specification****KD-Validated Anti-MAP2K3 Rabbit Monoclonal Antibody - Product Information**

Application	WB, FC, ICC
Primary Accession	<a href="#">P46734</a>
Clonality	Monoclonal
Isotype	Rabbit IgG
Calculated MW	Predicted, 39 kDa, observed, 36 kDa
Gene Name	KDa MAP2K3
Aliases	MAP2K3; Mitogen-Activated Protein Kinase Kinase 3; MEK3; MKK3; Stress-Activated Protein Kinase Kinase 2; MAP Kinase Kinase 3; MAPK/ERK Kinase 3; MAPKK3; SAPKK2; PRKMK3; Dual Specificity Mitogen-Activated Protein Kinase Kinase 3; SAPK Kinase 2; EC 2.7.12.2; SAPKK-2; MAPKK 3; MEK 3; Dual Specificity Mitogen Activated Protein Kinase Kinase 3; SKK2
Immunogen	A synthesized peptide derived from human MEK3

**KD-Validated Anti-MAP2K3 Rabbit Monoclonal Antibody - Additional Information**

Gene ID	5606
<b>Other Names</b>	
Dual specificity mitogen-activated protein kinase kinase 3, MAP kinase kinase 3, MAPKK 3, 2.7.12.2, MAPK/ERK kinase 3, MEK 3, Stress-activated protein kinase kinase 2, SAPK kinase 2, SAPKK-2, SAPKK2, MAP2K3, MEK3, MKK3, PRKMK3, SKK2	

**KD-Validated Anti-MAP2K3 Rabbit Monoclonal Antibody - Protein Information****Name** MAP2K3**Synonyms** MEK3, MKK3, PRKMK3, SKK2**Function**

Dual specificity kinase. Is activated by cytokines and environmental stress in vivo. Catalyzes the concomitant phosphorylation of a threonine and a tyrosine residue in the MAP kinase p38. Part of a signaling cascade that begins with the activation of the adrenergic receptor ADRA1B and leads to the activation of MAPK14.

**Tissue Location**

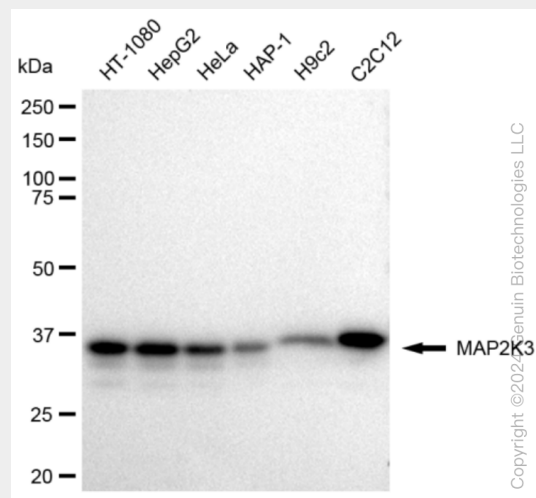
Abundant expression is seen in the skeletal muscle. It is also widely expressed in other tissues

## KD-Validated Anti-MAP2K3 Rabbit Monoclonal Antibody - Protocols

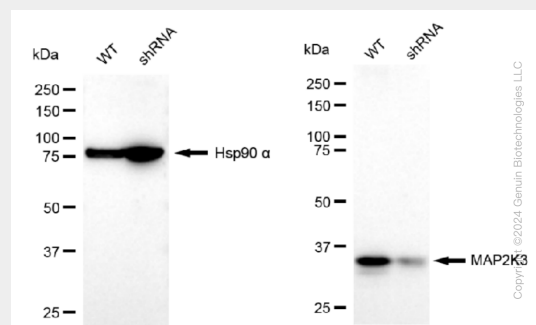
Provided below are standard protocols that you may find useful for product applications.

- [Western Blot](#)
- [Blocking Peptides](#)
- [Dot Blot](#)
- [Immunohistochemistry](#)
- [Immunofluorescence](#)
- [Immunoprecipitation](#)
- [Flow Cytometry](#)
- [Cell Culture](#)

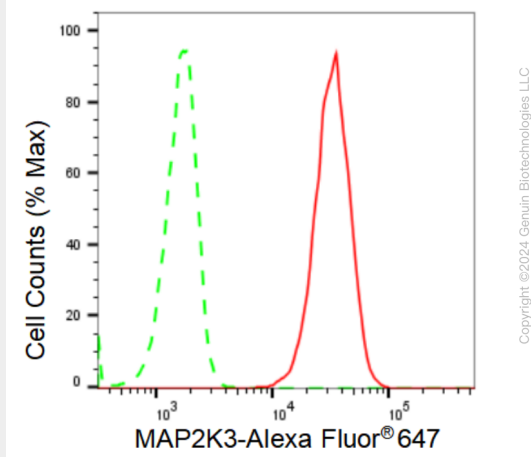
## KD-Validated Anti-MAP2K3 Rabbit Monoclonal Antibody - Images



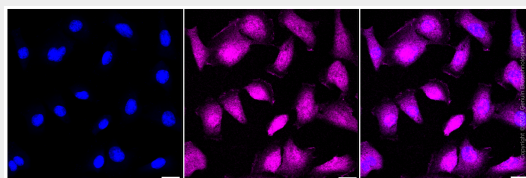
Western blotting analysis using anti-MAP2K3 antibody (Cat#AGI1133). Total cell lysates (30 µg) from various cell lines were loaded and separated by SDS-PAGE. The blot was incubated with anti-MAP2K3 antibody (Cat#AGI1133, 1:5,000) and HRP-conjugated goat anti-rabbit secondary antibody respectively.



Western blotting analysis using anti-MAP2K3 antibody (Cat#AGI1133). MAP2K3 expression in wild type (WT) and MAP2K3 shRNA knockdown (KD) HeLa cells with 30 µg of total cell lysates. Hsp90 α serves as a loading control. The blot was incubated with anti-MAP2K3 antibody (Cat#AGI1133, 1:5,000) and HRP-conjugated goat anti-rabbit secondary antibody respectively.



Flow cytometric analysis of MAP2K3 expression in C2C12 cells using MAP2K3 antibody (Cat#AGI1133, 1:2,000). Green, isotype control; red, MAP2K3.



Immunocytochemical staining of C2C12 cells with MAP2K3 antibody (Cat#AGI1133, 1:1,000). Nuclei were stained blue with DAPI; MAP2K3 was stained magenta with Alexa Fluor® 647. Images were taken using Leica stellaris 5. Protein abundance based on laser Intensity and smart gain: Medium. Scale bar: 20  $\mu$ m.