

**KD-Validated Anti-Complement C3 Rabbit Monoclonal Antibody**  
**Rabbit monoclonal antibody**  
**Catalog # AGI1135**

**Specification**

**KD-Validated Anti-Complement C3 Rabbit Monoclonal Antibody - Product Information**

Application	WB, ICC
Primary Accession	<a href="#">P01024</a>
Reactivity	Human
Clonality	Monoclonal
Isotype	Rabbit IgG
Calculated MW	Predicted, 187 kDa , observed, 187 kDa
Gene Name	KDa
Aliases	C3 C1QBP; Complement C3; CPAMD1; ARMD9; C3 And PZP-Like Alpha-2-Macroglobulin Domain-Containing Protein 1; Complement Component C3a; Complement Component C3b; Complement Component 3; C3a Anaphylatoxin; Prepro-C3; C3a; C3b; Epididymis Secretory Sperm Binding Protein Li 62p; Acylation-Stimulating Protein Cleavage Product; HEL-S-62p; AHUS5; ASP; C3A; C3B
Immunogen	A synthesized peptide derived from human C3 / C3a

**KD-Validated Anti-Complement C3 Rabbit Monoclonal Antibody - Additional Information**

Gene ID	718
<b>Other Names</b>	
Complement C3, C3 and PZP-like alpha-2-macroglobulin domain-containing protein 1, Complement C3 beta chain, C3-beta-c, C3bc, Complement C3 alpha chain, C3a anaphylatoxin, Acylation stimulating protein, ASP, C3adesArg, Complement C3b alpha' chain, Complement C3c alpha' chain fragment 1, Complement C3dg fragment, Complement C3g fragment, Complement C3d fragment, Complement C3f fragment, Complement C3c alpha' chain fragment 2, C3, CPAMD1	

**KD-Validated Anti-Complement C3 Rabbit Monoclonal Antibody - Protein Information**

**Name** C3 {ECO:0000303|PubMed:2579379, ECO:0000312|HGNC:HGNC:1318}

**Function**

Precursor of non-enzymatic components of the classical, alternative, lectin and GZMK complement pathways, which consist in a cascade of proteins that leads to phagocytosis and breakdown of pathogens and signaling that strengthens the adaptive immune system.

**Cellular Location**

Secreted. [C3a anaphylatoxin]: Secreted

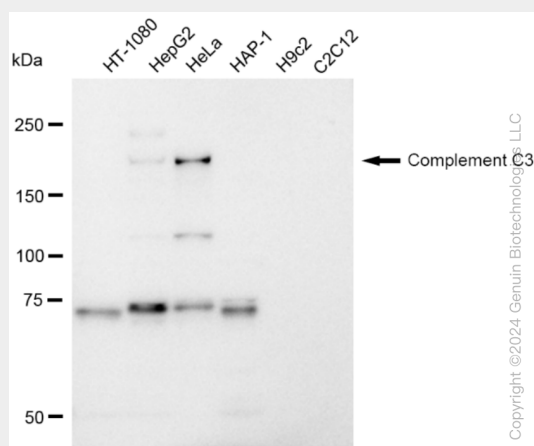
**Tissue Location**  
Plasma..

## KD-Validated Anti-Complement C3 Rabbit Monoclonal Antibody - Protocols

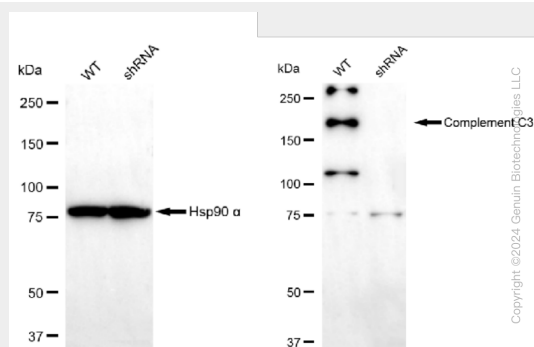
Provided below are standard protocols that you may find useful for product applications.

- [Western Blot](#)
- [Blocking Peptides](#)
- [Dot Blot](#)
- [Immunohistochemistry](#)
- [Immunofluorescence](#)
- [Immunoprecipitation](#)
- [Flow Cytometry](#)
- [Cell Culture](#)

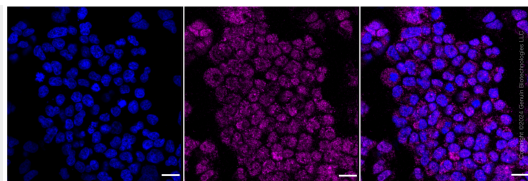
## KD-Validated Anti-Complement C3 Rabbit Monoclonal Antibody - Images



Western blotting analysis using anti-Complement C3 antibody (Cat#AGI1135). Total cell lysates (30 µg) from various cell lines were loaded and separated by SDS-PAGE. The blot was incubated with anti-Complement C3 antibody (Cat#AGI1135, 1:5,000) and HRP-conjugated goat anti-rabbit secondary antibody respectively.



Western blotting analysis using anti-Complement C3 antibody (Cat#AGI1135). Complement C3 expression in wild type (WT) and complement C3 shRNA knockdown (KD) HeLa cells with 30 µg of total cell lysates. Hsp90 α serves as a loading control. The blot was incubated with anti-Complement C3 antibody (Cat#AGI1135, 1:5,000) and HRP-conjugated goat anti-rabbit secondary antibody respectively.



Immunocytochemical staining of HeLa cells with Complement C3 antibody (Cat#AGI1135, 1:1,000). Nuclei were stained blue with DAPI; Complement C3 was stained magenta with Alexa Fluor® 647. Images were taken using Leica stellaris 5. Protein abundance based on laser Intensity and smart gain: Medium. Scale bar: 20  $\mu$ m.