

**KD-Validated Anti-Paxillin Rabbit Monoclonal Antibody**  
**Rabbit monoclonal antibody**  
**Catalog # AGI1138****Specification**

---

**KD-Validated Anti-Paxillin Rabbit Monoclonal Antibody - Product Information**

Application	WB, FC, ICC
Primary Accession	<a href="#">P49023</a>
Reactivity	Rat, Human, Mouse
Clonality	Monoclonal
Isotype	Rabbit IgG
Calculated MW	Predicted, 65 kDa , observed, 60 kDa KDa
Gene Name	PXN
Aliases	PXN; Paxillin; Testicular Tissue Protein Li 134
Immunogen	A synthesized peptide derived from human Paxillin

**KD-Validated Anti-Paxillin Rabbit Monoclonal Antibody - Additional Information**

Gene ID	5829
<b>Other Names</b>	
Paxillin, PXN	

**KD-Validated Anti-Paxillin Rabbit Monoclonal Antibody - Protein Information****Name** PXN ([HGNC:9718](#))**Function**

Cytoskeletal protein involved in actin-membrane attachment at sites of cell adhesion to the extracellular matrix (focal adhesion). Recruits other proteins such as TRIM15 to focal adhesion.

**Cellular Location**

Cytoplasm, cytoskeleton. Cell junction, focal adhesion. Cytoplasm, cell cortex {ECO:0000250|UniProtKB:Q8VI36}. Note=Colocalizes with integrins at the cell periphery. Colocalize with PXN to membrane ruffles and the leading edge of migrating cells (PubMed:23128389). {ECO:0000250, ECO:0000269|PubMed:23128389}

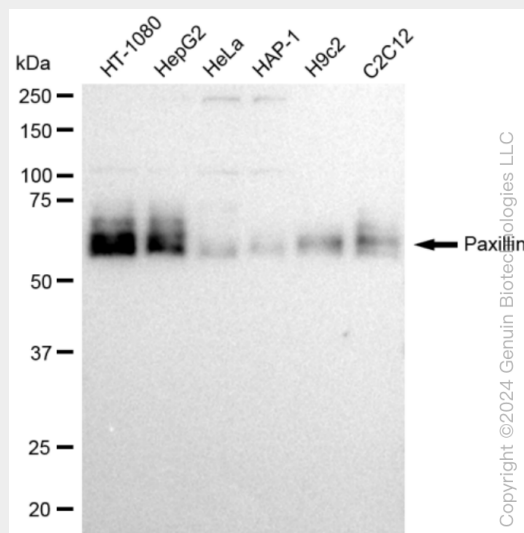
**KD-Validated Anti-Paxillin Rabbit Monoclonal Antibody - Protocols**

Provided below are standard protocols that you may find useful for product applications.

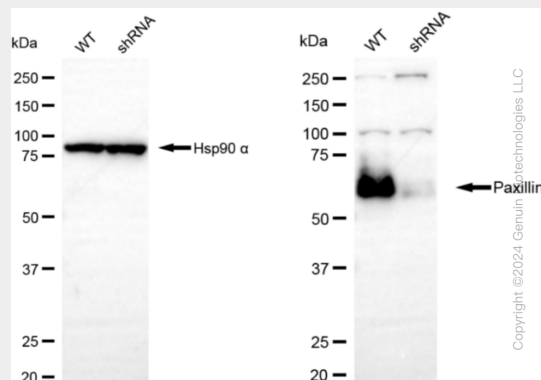
- [Western Blot](#)
- [Blocking Peptides](#)
- [Dot Blot](#)
- [Immunohistochemistry](#)

- [Immunofluorescence](#)
- [Immunoprecipitation](#)
- [Flow Cytometry](#)
- [Cell Culture](#)

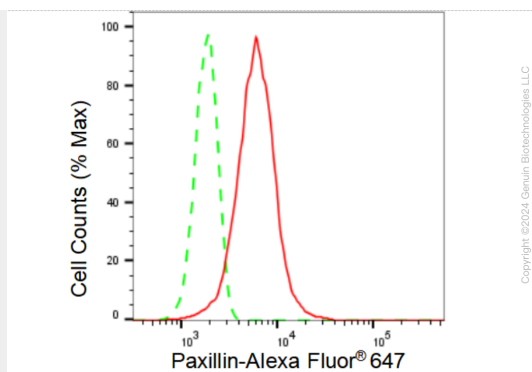
### KD-Validated Anti-Paxillin Rabbit Monoclonal Antibody - Images



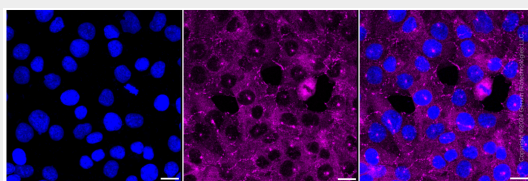
Western blotting analysis using anti-Paxillin antibody (Cat#AGI1138). Total cell lysates (30 µg) from various cell lines were loaded and separated by SDS-PAGE. The blot was incubated with anti-Paxillin antibody (Cat#AGI1138, 1:5,000) and HRP-conjugated goat anti-rabbit secondary antibody respectively.



Western blotting analysis using anti-Paxillin antibody (Cat#AGI1138). Paxillin expression in wild type (WT) and Paxillin shRNA knockdown (KD) HeLa cells with 30 µg of total cell lysates. Hsp90 α serves as a loading control. The blot was incubated with anti-Paxillin antibody (Cat#AGI1138, 1:5,000) and HRP-conjugated goat anti-rabbit secondary antibody respectively.



Flow cytometric analysis of Paxillin expression in HT-1080 cells using Paxillin antibody (Cat#AGI1138, 1:2,000). Green, isotype control; red, Paxillin.



Immunocytochemical staining of HT-1080 cells with Paxillin antibody (Cat#AGI1138, 1:1,000). Nuclei were stained blue with DAPI; Paxillin was stained magenta with Alexa Fluor® 647. Images were taken using Leica stellaris 5. Protein abundance based on laser Intensity and smart gain: High. Scale bar: 20 µm.