

KD-Validated Anti-p150 CAF1 Rabbit Monoclonal Antibody
Rabbit monoclonal antibody
Catalog # AGI1142**Specification****KD-Validated Anti-p150 CAF1 Rabbit Monoclonal Antibody - Product Information**

Application	WB, FC, ICC
Primary Accession	Q13111
Reactivity	Human
Clonality	Monoclonal
Isotype	Rabbit IgG
Calculated MW	Predicted , 107 kDa , observed , 150 kDa kDa
Gene Name	CHAF1A
Aliases	CAF1P150; CAF1B; CAF-1; CAF1; P150; Chromatin Assembly Factor I P150 Subunit; Chromatin Assembly Factor I (150 kDa); CAF-I 150 kDa Subunit; CAF-1 Subunit A; CAF-I P150; MGC71229; Hp150; Chromatin Assembly Factor 1, Subunit A (P150); CTB-50L17.7; CAF
Immunogen	A synthesized peptide derived from human p150 CAF1

KD-Validated Anti-p150 CAF1 Rabbit Monoclonal Antibody - Additional Information

Gene ID	10036
Other Names	
Chromatin assembly factor 1 subunit A, CAF-1 subunit A, Chromatin assembly factor I p150 subunit, CAF-I 150 kDa subunit, CAF-I p150, hp150, CHAF1A (http://www.genenames.org/cgi-bin/gene_symbol_report?hgnc_id=1910)>HGNC:1910), CAF, CAF1P150	

KD-Validated Anti-p150 CAF1 Rabbit Monoclonal Antibody - Protein Information**Name** CHAF1A ([HGNC:1910](#))**Synonyms** CAF, CAF1P150**Function**

Acts as a component of the histone chaperone complex chromatin assembly factor 1 (CAF-1), which assembles histone octamers onto DNA during replication and repair. CAF-1 performs the first step of the nucleosome assembly process, bringing newly synthesized histones H3 and H4 to replicating DNA; histones H2A/H2B can bind to this chromatin precursor subsequent to DNA replication to complete the histone octamer. It may play a role in heterochromatin maintenance in proliferating cells by bringing newly synthesized cbx proteins to heterochromatic DNA replication foci.

Cellular Location

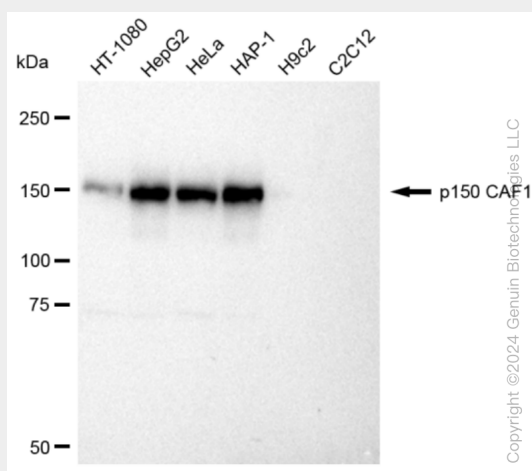
Nucleus. Note=DNA replication foci

KD-Validated Anti-p150 CAF1 Rabbit Monoclonal Antibody - Protocols

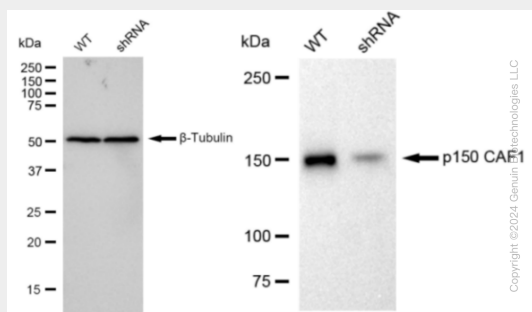
Provided below are standard protocols that you may find useful for product applications.

- [Western Blot](#)
- [Blocking Peptides](#)
- [Dot Blot](#)
- [Immunohistochemistry](#)
- [Immunofluorescence](#)
- [Immunoprecipitation](#)
- [Flow Cytometry](#)
- [Cell Culture](#)

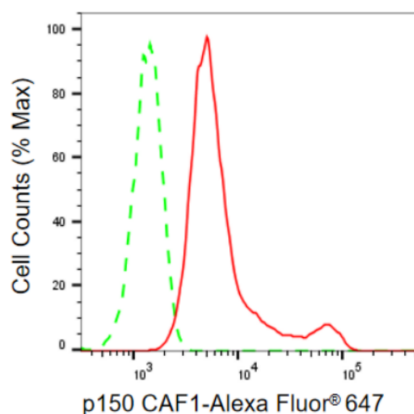
KD-Validated Anti-p150 CAF1 Rabbit Monoclonal Antibody - Images



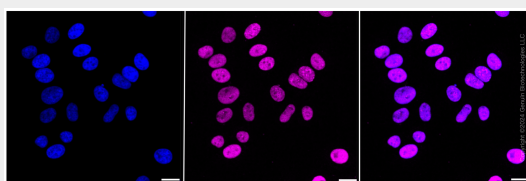
Western blotting analysis using anti-p150 CAF1 antibody (Cat#AGI1142). Total cell lysates (30 μ g) from various cell lines were loaded and separated by SDS-PAGE. The blot was incubated with anti-p150 CAF1 antibody (Cat#AGI1142, 1:5,000) and HRP-conjugated goat anti-rabbit secondary antibody respectively.



Western blotting analysis using anti-p150 CAF1 antibody (Cat#AGI1142). p150 CAF1 expression in wild type (WT) and p150 CAF1 shRNA knockdown (KD) HeLa cells with 30 μ g of total cell lysates. β -Tubulin serves as a loading control. The blot was incubated with anti-p150 CAF1 antibody (Cat#AGI1142, 1:5,000) and HRP-conjugated goat anti-rabbit secondary antibody respectively.



Flow cytometric analysis of p150 CAF1 expression in HepG2 cells using p150 CAF1 antibody (Cat#AGI1142, 1:2,000). Green, isotype control; red, p150 CAF1.



Immunocytochemical staining of HepG2 cells with p150 CAF1 antibody (Cat#AGI1142, 1:1,000). Nuclei were stained blue with DAPI; p150 CAF1 was stained magenta with Alexa Fluor® 647. Images were taken using Leica stellaris 5. Protein abundance based on laser Intensity and smart gain: High. Scale bar: 20 µm.