

KD-Validated Anti-Catalase Rabbit Monoclonal Antibody
Rabbit monoclonal antibody
Catalog # AGI1143**Specification**

KD-Validated Anti-Catalase Rabbit Monoclonal Antibody - Product Information

Application	WB, FC, ICC
Primary Accession	P04040
Reactivity	Rat, Human
Clonality	Monoclonal
Isotype	Rabbit IgG
Calculated MW	Predicted, 60 kDa , observed, 60 kDa KDa
Gene Name	CAT
Aliases	CAT; Catalase; EC 1.11.1.6; Epididymis Secretory Sperm Binding Protein
Immunogen	A synthesized peptide derived from human Catalase

KD-Validated Anti-Catalase Rabbit Monoclonal Antibody - Additional Information

Gene ID	847
Other Names	
Catalase, 1.11.1.6, CAT	

KD-Validated Anti-Catalase Rabbit Monoclonal Antibody - Protein Information**Name** CAT**Function**

Catalyzes the degradation of hydrogen peroxide (H₂O₂) generated by peroxisomal oxidases to water and oxygen, thereby protecting cells from the toxic effects of hydrogen peroxide (PubMed:7882369). Promotes growth of cells including T-cells, B-cells, myeloid leukemia cells, melanoma cells, mastocytoma cells and normal and transformed fibroblast cells (PubMed:7882369).

Cellular Location

Peroxisome matrix

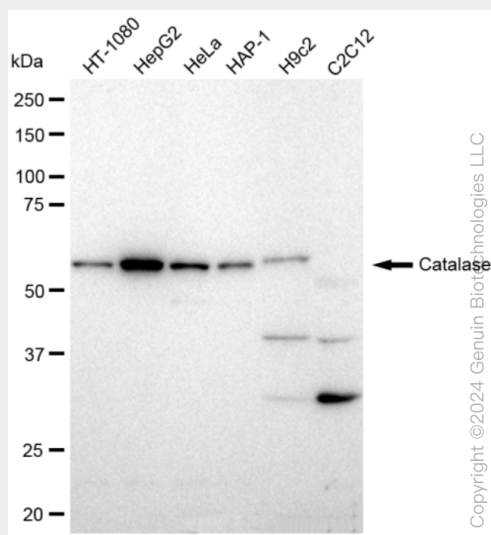
KD-Validated Anti-Catalase Rabbit Monoclonal Antibody - Protocols

Provided below are standard protocols that you may find useful for product applications.

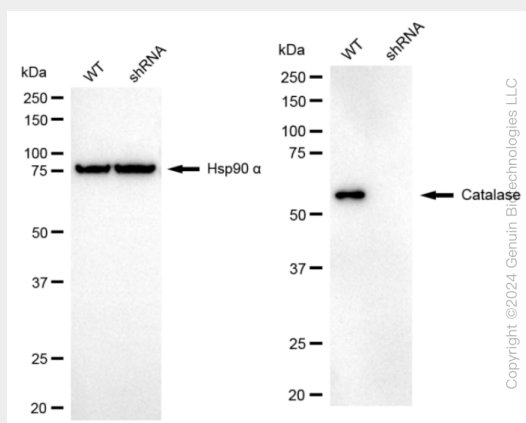
- [Western Blot](#)
- [Blocking Peptides](#)
- [Dot Blot](#)

- [Immunohistochemistry](#)
- [Immunofluorescence](#)
- [Immunoprecipitation](#)
- [Flow Cytometry](#)
- [Cell Culture](#)

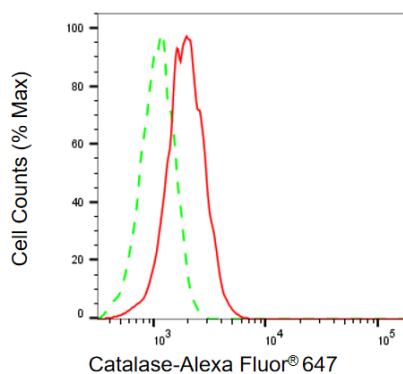
KD-Validated Anti-Catalase Rabbit Monoclonal Antibody - Images



Western blotting analysis using anti-Catalase antibody (Cat#AGI1143). Total cell lysates (30 µg) from various cell lines were loaded and separated by SDS-PAGE. The blot was incubated with anti-Catalase antibody (Cat#AGI1143, 1:5,000) and HRP-conjugated goat anti-rabbit secondary antibody respectively.

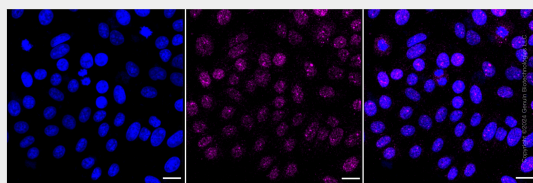


Western blotting analysis using anti-Catalase antibody (Cat#AGI1143). Catalase expression in wild type (WT) and Catalase shRNA knockdown (KD) HeLa cells with 20 µg of total cell lysates. Hsp90 α serves as a loading control. The blot was incubated with anti-Catalase antibody (Cat#AGI1143, 1:5,000) and HRP-conjugated goat anti-rabbit secondary antibody respectively.



Copyright ©2025 Genuin Biotechnologies LLC

Flow cytometric analysis of Catalase expression in HepG2 cells using anti-Catalase antibody (Cat #AGI1143, 1:2,000). Green, isotype control; red, Catalase.



Immunocytochemical staining of HepG2 cells with anti-Catalase antibody (Cat#AGI1143, 1:1,000). Nuclei were stained blue with DAPI; Catalase was stained magenta with Alexa Fluor® 647. Images were taken using Leica stellaris 5. Protein abundance based on laser Intensity and smart gain: Low. Scale bar: 20 µm.