

KD-Validated Anti-CD58 Rabbit Monoclonal Antibody
Rabbit monoclonal antibody
Catalog # AGI1152**Specification**

KD-Validated Anti-CD58 Rabbit Monoclonal Antibody - Product Information

Application	WB, FC, ICC
Primary Accession	P19256
Reactivity	Human
Clonality	Monoclonal
Isotype	Rabbit IgG
Calculated MW	Predicted, 28 kDa , observed, 50-75 kDa
Gene Name	CD58
Aliases	CD58; CD58 Molecule; LFA3; CD58 Antigen, (Lymphocyte Function-Associated Antigen 3); Lymphocyte Function-Associated Antigen 3; Surface Glycoprotein LFA-3; Ag3; CD58 Antigen; LFA-3
Immunogen	A synthesized peptide derived from CD58

KD-Validated Anti-CD58 Rabbit Monoclonal Antibody - Additional Information

Gene ID	965
Other Names	
Lymphocyte function-associated antigen 3, Ag3, Surface glycoprotein LFA-3, CD58, CD58, LFA3	

KD-Validated Anti-CD58 Rabbit Monoclonal Antibody - Protein Information**Name** CD58**Synonyms** LFA3**Function**

Ligand of the T-lymphocyte CD2 glycoprotein. This interaction is important in mediating thymocyte interactions with thymic epithelial cells, antigen-independent and -dependent interactions of T-lymphocytes with target cells and antigen-presenting cells and the T-lymphocyte rosetting with erythrocytes. In addition, the LFA-3/CD2 interaction may prime response by both the CD2+ and LFA-3+ cells.

Cellular Location

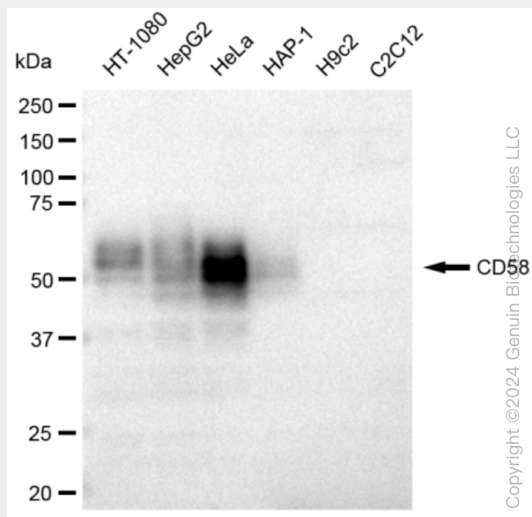
[Isoform 1]: Cell membrane; Single-pass type I membrane protein

KD-Validated Anti-CD58 Rabbit Monoclonal Antibody - Protocols

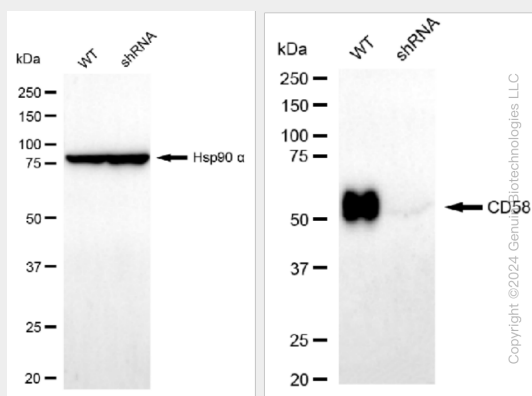
Provided below are standard protocols that you may find useful for product applications.

- [Western Blot](#)
- [Blocking Peptides](#)
- [Dot Blot](#)
- [Immunohistochemistry](#)
- [Immunofluorescence](#)
- [Immunoprecipitation](#)
- [Flow Cytometry](#)
- [Cell Culture](#)

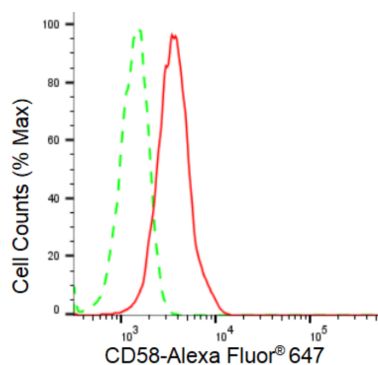
KD-Validated Anti-CD58 Rabbit Monoclonal Antibody - Images



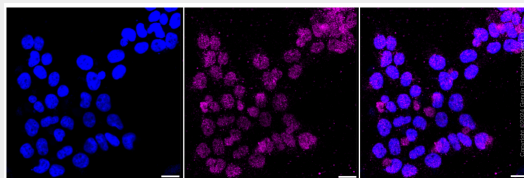
Western blotting analysis using anti-CD58 antibody (Cat#AGI1152). Total cell lysates (30 µg) from various cell lines were loaded and separated by SDS-PAGE. The blot was incubated with anti-CD58 antibody (Cat#AGI1152, 1:5,000) and HRP-conjugated goat anti-rabbit secondary antibody respectively.



Western blotting analysis using anti-CD58 antibody (Cat#AGI1152). CD58 expression in wild type (WT) and CD58 shRNA knockdown (KD) HeLa cells with 30 µg of total cell lysates. Hsp90 α serves as a loading control. The blot was incubated with anti-CD58 antibody (Cat#AGI1152, 1:5,000) and HRP-conjugated goat anti-rabbit secondary antibody respectively.



Flow cytometric analysis of CD58 expression in HeLa cells using CD58 antibody (Cat#AGI1152, 1:2,000). Green, isotype control; red, CD58.



Immunocytochemical staining of HeLa cells with CD58 antibody (Cat#AGI1152, 1:1,000). Nuclei were stained blue with DAPI; CD58 was stained magenta with Alexa Fluor® 647. Images were taken using Leica stellaris 5. Protein abundance based on laser Intensity and smart gain: Low. Scale bar: 20 µm.