

**KD-Validated Anti-CAP1 Rabbit Monoclonal Antibody**  
**Rabbit monoclonal antibody**  
**Catalog # AGI1154****Specification**

---

**KD-Validated Anti-CAP1 Rabbit Monoclonal Antibody - Product Information**

Application	WB, FC, ICC
Primary Accession	<a href="#">Q01518</a>
Reactivity	Human
Clonality	Monoclonal
Isotype	Rabbit IgG
Calculated MW	Predicted, 52 kDa , observed, 55 kDa KDa
Gene Name	CAP1
Aliases	CAP1; Cyclase Associated Actin Cytoskeleton Regulatory Protein 1; CAP; Adenylate Cyclase Associated Protein 1; Adenylyl Cyclase-Associated Protein 1; CAP, Adenylate Cyclase-Associated Protein 1 (Yeast); Testis Secretory Sperm-Binding Protein Li 218p; CAP, Adenylate Cyclase-Associated Protein 1; CAP1-PEN; CAP 1
Immunogen	A synthesized peptide derived from CAP1

**KD-Validated Anti-CAP1 Rabbit Monoclonal Antibody - Additional Information**

Gene ID	10487
<b>Other Names</b>	
Adenylyl cyclase-associated protein 1, CAP 1, CAP1, CAP	

**KD-Validated Anti-CAP1 Rabbit Monoclonal Antibody - Protein Information****Name** CAP1**Synonyms** CAP**Function**

Directly regulates filament dynamics and has been implicated in a number of complex developmental and morphological processes, including mRNA localization and the establishment of cell polarity.

**Cellular Location**

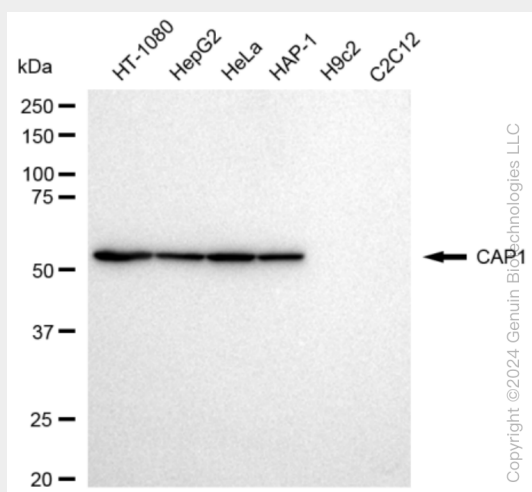
Cell membrane; Peripheral membrane protein

**KD-Validated Anti-CAP1 Rabbit Monoclonal Antibody - Protocols**

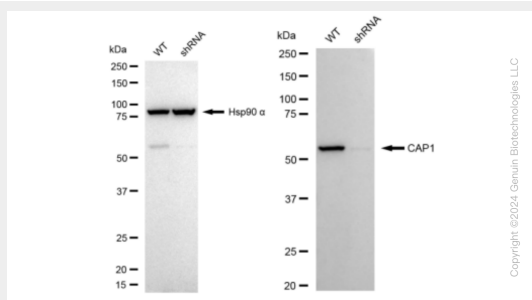
Provided below are standard protocols that you may find useful for product applications.

- [Western Blot](#)
- [Blocking Peptides](#)
- [Dot Blot](#)
- [Immunohistochemistry](#)
- [Immunofluorescence](#)
- [Immunoprecipitation](#)
- [Flow Cytometry](#)
- [Cell Culture](#)

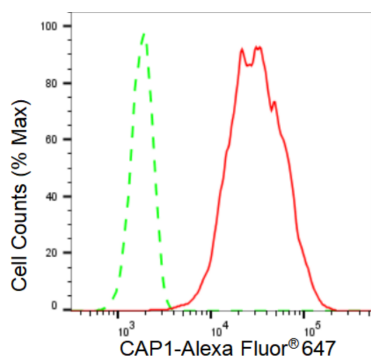
## KD-Validated Anti-CAP1 Rabbit Monoclonal Antibody - Images



Western blotting analysis using anti-CAP1 antibody (Cat#61336). Total cell lysates (30 µg) from various cell lines were loaded and separated by SDS-PAGE. The blot was incubated with anti-CAP1 antibody (Cat#61336, 1:5,000) and HRP-conjugated goat anti-rabbit secondary antibody (Cat#201, 1:20,000) respectively. Image was developed using FeQ™ ECL Substrate Kit (Cat#226).

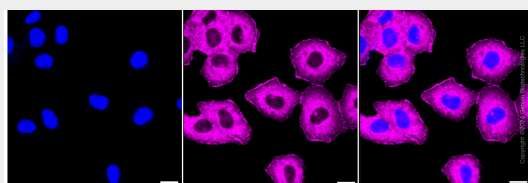


Western blotting analysis using anti-CAP1 antibody (Cat#61336). CAP1 expression in wild type (WT) and CAP1 shRNA knockdown (KD) HeLa cells with 30 µg of total cell lysates. Hsp90 α serves as a loading control. The blot was incubated with anti-CAP1 antibody (Cat#61336, 1:5,000) and HRP-conjugated goat anti-rabbit secondary antibody (Cat#201, 1:20,000) respectively. Image was developed using FeQ™ ECL Substrate Kit (Cat#226).



Copyright ©2024 Genun Biotechnologies LLC

Flow cytometric analysis of CAP1 expression in HT-1080 cells using CAP1 antibody (Cat#61336, 1:2,000). Green, isotype control; red, CAP1.



Immunocytochemical staining of HT-1080 cells with CAP1 antibody (Cat#61336, 1:1,000). Nuclei were stained blue with DAPI; CAP1 was stained magenta with Alexa Fluor® 647. Images were taken using Leica stellaris 5. Protein abundance based on laser Intensity and smart gain: Medium. Scale bar: 20  $\mu$ m.