

KD-Validated Anti-Bcl-XL Rabbit Monoclonal Antibody
Rabbit monoclonal antibody
Catalog # AGI1163**Specification****KD-Validated Anti-Bcl-XL Rabbit Monoclonal Antibody - Product Information**

Application	WB, FC, ICC
Primary Accession	Q07817
Reactivity	Rat, Human, Mouse
Clonality	Monoclonal
Isotype	Rabbit IgG
Calculated MW	Predicted, 26 kDa , observed, 26 kDa KDa
Gene Name	BCL2L1
Aliases	BCL2L1; BCL2 Like 1; BCL2L; BCLX; PPP1R52; Protein Phosphatase 1, Regulatory Subunit 52; Apoptosis Regulator Bcl-X; Bcl-2-Like Protein 1; Bcl-X; BCL-XL/S; Bcl2-L-1; Bcl-XL; Bcl-XS; BCL-XL; BCL-XS; BCL-X
Immunogen	A synthesized peptide derived from human Bcl-XL

KD-Validated Anti-Bcl-XL Rabbit Monoclonal Antibody - Additional Information

Gene ID	598
Other Names	
Bcl-2-like protein 1, Bcl2-L-1, Apoptosis regulator Bcl-X, BCL2L1, BCL2L, BCLX	

KD-Validated Anti-Bcl-XL Rabbit Monoclonal Antibody - Protein Information**Name** BCL2L1**Synonyms** BCL2L, BCLX**Function**

Potent inhibitor of cell death. Inhibits activation of caspases. Appears to regulate cell death by blocking the voltage- dependent anion channel (VDAC) by binding to it and preventing the release of the caspase activator, CYC1, from the mitochondrial membrane. Also acts as a regulator of G2 checkpoint and progression to cytokinesis during mitosis. Isoform Bcl-X(S) promotes apoptosis.

Cellular Location

[Isoform Bcl-X(L)]: Mitochondrion inner membrane. Mitochondrion outer membrane Mitochondrion matrix. Cytoplasmic vesicle, secretory vesicle, synaptic vesicle membrane. Cytoplasm, cytosol. Cytoplasm, cytoskeleton, microtubule organizing center, centrosome. Nucleus membrane; Single-pass membrane protein; Cytoplasmic side. Note=After neuronal stimulation, translocates from cytosol to synaptic vesicle and mitochondrion membrane in a calmodulin-dependent manner (By similarity). Localizes to the centrosome when phosphorylated at Ser-49

Tissue Location

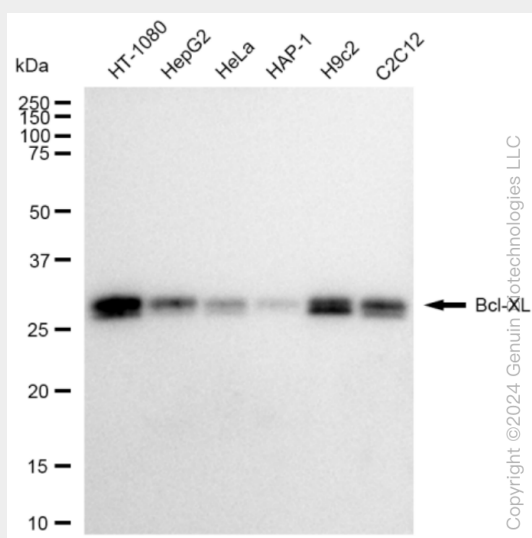
Bcl-X(S) is expressed at high levels in cells that undergo a high rate of turnover, such as developing lymphocytes. In contrast, Bcl-X(L) is found in tissues containing long-lived postmitotic cells, such as adult brain

KD-Validated Anti-Bcl-XL Rabbit Monoclonal Antibody - Protocols

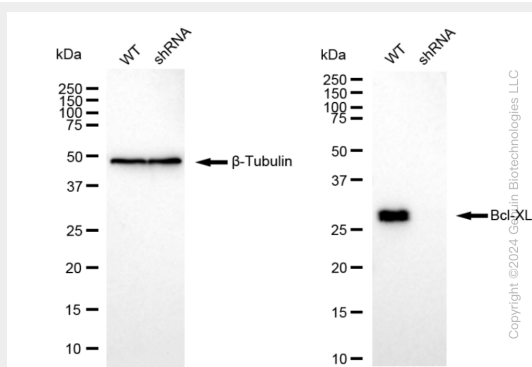
Provided below are standard protocols that you may find useful for product applications.

- [Western Blot](#)
- [Blocking Peptides](#)
- [Dot Blot](#)
- [Immunohistochemistry](#)
- [Immunofluorescence](#)
- [Immunoprecipitation](#)
- [Flow Cytometry](#)
- [Cell Culture](#)

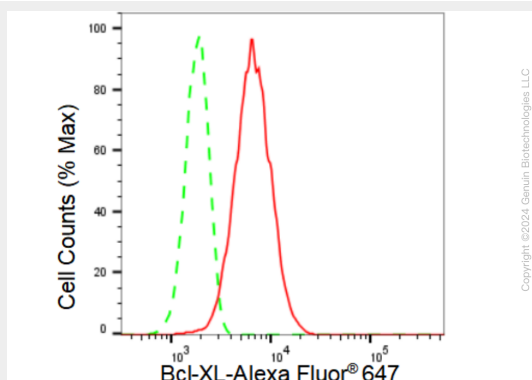
KD-Validated Anti-Bcl-XL Rabbit Monoclonal Antibody - Images



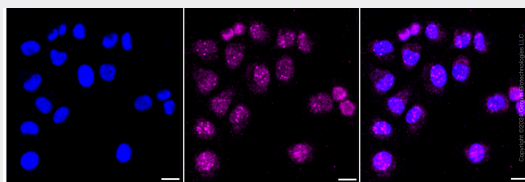
Western blotting analysis using anti-Bcl-XL antibody (Cat#AGI1163). Total cell lysates (30 µg) from various cell lines were loaded and separated by SDS-PAGE. The blot was incubated with anti-Bcl-XL antibody (Cat#AGI1163, 1:5,000) and HRP-conjugated goat anti-rabbit secondary antibody respectively.



Western blotting analysis using anti-Bcl-XL antibody (Cat#AGI1163). Bcl-XL expression in wild type (WT) and Bcl-XL shRNA knockdown (KD) HeLa cells with 30 μ g of total cell lysates. β -Tubulin serves as a loading control. The blot was incubated with anti-Bcl-XL antibody (Cat#AGI1163, 1:5,000) and HRP-conjugated goat anti-rabbit secondary antibody respectively.



Flow cytometric analysis of Bcl-XL expression in HT-1080 cells using Bcl-XL antibody (Cat#AGI1163, 1:2,000). Green, isotype control; red, Bcl-XL.



Immunocytochemical staining of HT-1080 cells with Bcl-XL antibody (Cat#AGI1163, 1:1,000). Nuclei were stained blue with DAPI; Bcl-XL was stained magenta with Alexa Fluor® 647. Images were taken using Leica stellaris 5. Protein abundance based on laser Intensity and smart gain: Low. Scale bar: 20 μ m.