

**KD-Validated Anti-Chromosome 3 open reading frame 38 Rabbit Monoclonal Antibody**  
**Rabbit monoclonal antibody**  
**Catalog # AGI1167****Specification**

---

**KD-Validated Anti-Chromosome 3 open reading frame 38 Rabbit Monoclonal Antibody - Product Information**

Application	WB, ICC
Primary Accession	<a href="#">Q5JPI3</a>
Reactivity	Rat, Human, Mouse
Clonality	Monoclonal
Isotype	Rabbit IgG
Calculated MW	Predicted, 38 kDa, observed, 35 kDa kDa
Gene Name	C3orf38
Aliases	C3orf38; Chromosome 3 Open Reading Frame 38; Uncharacterized Protein C3orf38; Dense Incisors; MGC26717
Immunogen	A synthesized peptide derived from human C3orf38

**KD-Validated Anti-Chromosome 3 open reading frame 38 Rabbit Monoclonal Antibody - Additional Information**

Gene ID	285237
<b>Other Names</b>	
Uncharacterized protein C3orf38, C3orf38	

**KD-Validated Anti-Chromosome 3 open reading frame 38 Rabbit Monoclonal Antibody - Protein Information****Name** C3orf38**Function**

May be involved in apoptosis regulation.

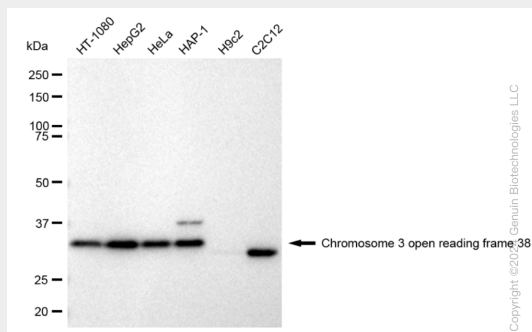
**KD-Validated Anti-Chromosome 3 open reading frame 38 Rabbit Monoclonal Antibody - Protocols**

Provided below are standard protocols that you may find useful for product applications.

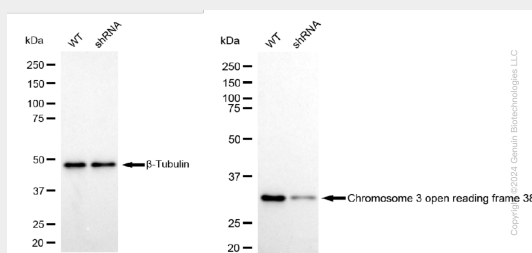
- [Western Blot](#)
- [Blocking Peptides](#)
- [Dot Blot](#)
- [Immunohistochemistry](#)
- [Immunofluorescence](#)
- [Immunoprecipitation](#)

- [Flow Cytometry](#)
- [Cell Culture](#)

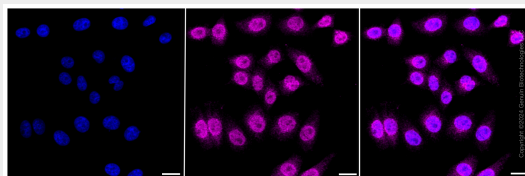
## KD-Validated Anti-Chromosome 3 open reading frame 38 Rabbit Monoclonal Antibody - Images



Western blotting analysis using anti-Chromosome 3 open reading frame 38 antibody (Cat#AGI1167). Total cell lysates (30 µg) from various cell lines were loaded and separated by SDS-PAGE. The blot was incubated with anti-Chromosome 3 open reading frame 38 antibody (Cat#AGI1167, 1:5,000) and HRP-conjugated goat anti-rabbit secondary antibody respectively.



Western blotting analysis using anti-Chromosome 3 open reading frame 38 antibody (Cat#AGI1167). Chromosome 3 open reading frame 38 expression in wild type (WT) and chromosome 3 open reading frame 38 shRNA knockdown (KD) HeLa cells with 30 µg of total cell lysates. β-Tubulin serves as a loading control. The blot was incubated with anti-Chromosome 3 open reading frame 38 antibody (Cat#AGI1167, 1:5,000) and HRP-conjugated goat anti-rabbit secondary antibody respectively.



Immunocytochemical staining of HepG2 cells with Chromosome 3 open reading frame 38 antibody (Cat#AGI1167, 1:1,000). Nuclei were stained blue with DAPI; Chromosome 3 open reading frame 38 was stained magenta with Alexa Fluor® 647. Images were taken using Leica stellaris 5. Protein abundance based on laser intensity and smart gain: Medium. Scale bar: 20 µm.