

**KD-Validated Anti-CDC25C Rabbit Monoclonal Antibody**  
**Rabbit monoclonal antibody**  
**Catalog # AGI1184****Specification**

---

**KD-Validated Anti-CDC25C Rabbit Monoclonal Antibody - Product Information**

Application	WB, FC, ICC
Primary Accession	<a href="#">P30307</a>
Reactivity	Human
Clonality	Monoclonal
Isotype	Rabbit IgG
Calculated MW	Predicted, 53 kDa , observed, 60 kDa KDa
Gene Name	CDC25C
Aliases	CDC25C; Cell Division Cycle 25C; M-Phase Inducer Phosphatase 3; PPP1R60; Protein Phosphatase 1, Regulatory Subunit 60; EC 3.1.3.48; CDC25; Dual Specificity Phosphatase CDC25C; Dual Specificity Phosphatase Cdc25C; Phosphotyrosine Phosphatase; CDC25 Homolog C (S. Pombe); Mitosis Inducer CDC25; CDC25 Homolog C
Immunogen	A synthesized peptide derived from human Cdc25C

**KD-Validated Anti-CDC25C Rabbit Monoclonal Antibody - Additional Information**

Gene ID	995
<b>Other Names</b>	
M-phase inducer phosphatase 3, 3.1.3.48, Dual specificity phosphatase Cdc25C, CDC25C	

**KD-Validated Anti-CDC25C Rabbit Monoclonal Antibody - Protein Information****Name** CDC25C**Function**

Functions as a dosage-dependent inducer in mitotic control. Tyrosine protein phosphatase required for progression of the cell cycle (PubMed:<a href="http://www.uniprot.org/citations/8119945" target="\_blank">8119945</a>). When phosphorylated, highly effective in activating G2 cells into prophase (PubMed:<a href="http://www.uniprot.org/citations/8119945" target="\_blank">8119945</a>). Directly dephosphorylates CDK1 and activates its kinase activity (PubMed:<a href="http://www.uniprot.org/citations/8119945" target="\_blank">8119945</a>).

**Cellular Location**

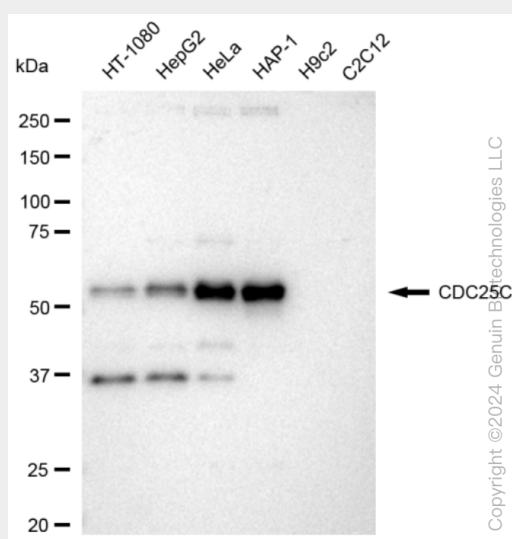
Nucleus

## KD-Validated Anti-CDC25C Rabbit Monoclonal Antibody - Protocols

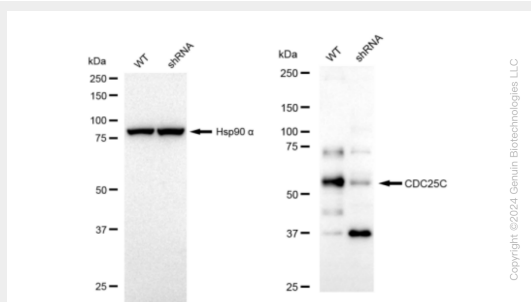
Provided below are standard protocols that you may find useful for product applications.

- [Western Blot](#)
- [Blocking Peptides](#)
- [Dot Blot](#)
- [Immunohistochemistry](#)
- [Immunofluorescence](#)
- [Immunoprecipitation](#)
- [Flow Cytometry](#)
- [Cell Culture](#)

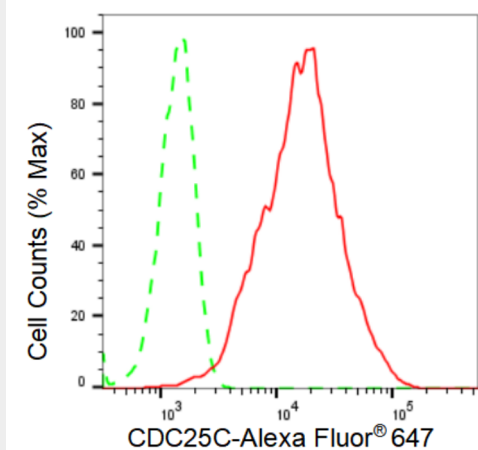
## KD-Validated Anti-CDC25C Rabbit Monoclonal Antibody - Images



Western blotting analysis using anti-CDC25C antibody (Cat#AGI1184). Total cell lysates (30 µg) from various cell lines were loaded and separated by SDS-PAGE. The blot was incubated with anti-CDC25C antibody (Cat#AGI1184, 1:5,000) and HRP-conjugated goat anti-rabbit secondary antibody respectively.

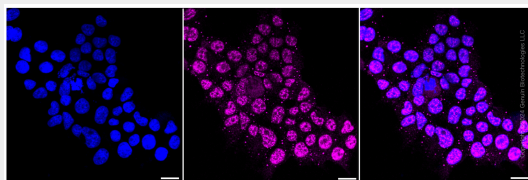


Western blotting analysis using anti-CDC25C antibody (Cat#AGI1184). CDC25C expression in wild type (WT) and CDC25C shRNA knockdown (KD) HeLa cells with 30 µg of total cell lysates. Hsp90 α serves as a loading control. The blot was incubated with anti-CDC25C antibody (Cat#AGI1184, 1:5,000) and HRP-conjugated goat anti-rabbit secondary antibody respectively.



Copyright ©2024 Genuin Biotechnologies LLC

Flow cytometric analysis of CDC25C expression in HeLa cells using CDC25C antibody (Cat#AGI1184, 1:2,000). Green, isotype control; red, CDC25C.



Immunocytochemical staining of HeLa cells with CDC25C antibody (Cat#AGI1184, 1:1,000). Nuclei were stained blue with DAPI; CDC25C was stained magenta with Alexa Fluor® 647. Images were taken using Leica stellaris 5. Protein abundance based on laser Intensity and smart gain: Medium. Scale bar: 20 µm.