

**KD-Validated Anti-CDC40 Rabbit Monoclonal Antibody**  
**Rabbit monoclonal antibody**  
**Catalog # AGI1186****Specification****KD-Validated Anti-CDC40 Rabbit Monoclonal Antibody - Product Information**

Application	WB, FC, ICC
Primary Accession	<a href="#">O60508</a>
Reactivity	Rat, Human, Mouse
Clonality	Monoclonal
Isotype	Rabbit IgG
Calculated MW	Predicted, 66 kDa , observed, 74 kDa KDa
Gene Name	CDC40
Aliases	CDC40; Cell Division Cycle 40; PRPF17; PRP17; EHB3; Cell Division Cycle 40 Homolog; Pre-mRNA-Processing Factor 17; EH-Binding Protein 3; PRP17 Homolog; FLJ10564; HPRP17; Cell Division Cycle 40 Homolog (S. Cerevisiae); Cell Division Cycle 40 Homolog (Yeast); Pre-mRNA Splicing Factor 17; PCH15; Ehb3
Immunogen	A synthesized peptide derived from human CDC40

**KD-Validated Anti-CDC40 Rabbit Monoclonal Antibody - Additional Information**

Gene ID	51362
<b>Other Names</b>	
Pre-mRNA-processing factor 17, Cell division cycle 40 homolog, EH-binding protein 3, Ehb3, PRP17 homolog, hPRP17, CDC40, EHB3, PRP17, PRPF17	

**KD-Validated Anti-CDC40 Rabbit Monoclonal Antibody - Protein Information****Name** CDC40**Synonyms** EHB3, PRP17, PRPF17**Function**

Required for pre-mRNA splicing as component of the activated spliceosome (PubMed:<a href="http://www.uniprot.org/citations/33220177" target="\_blank">33220177</a>). Plays an important role in embryonic brain development; this function does not require proline isomerization (PubMed:<a href="http://www.uniprot.org/citations/33220177" target="\_blank">33220177</a>).

**Cellular Location**

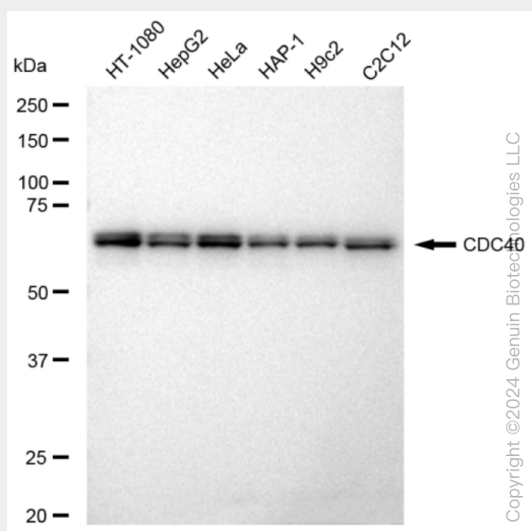
Nucleus. Nucleus speckle

## KD-Validated Anti-CDC40 Rabbit Monoclonal Antibody - Protocols

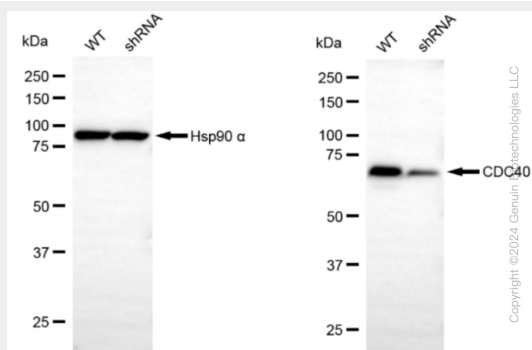
Provided below are standard protocols that you may find useful for product applications.

- [Western Blot](#)
- [Blocking Peptides](#)
- [Dot Blot](#)
- [Immunohistochemistry](#)
- [Immunofluorescence](#)
- [Immunoprecipitation](#)
- [Flow Cytometry](#)
- [Cell Culture](#)

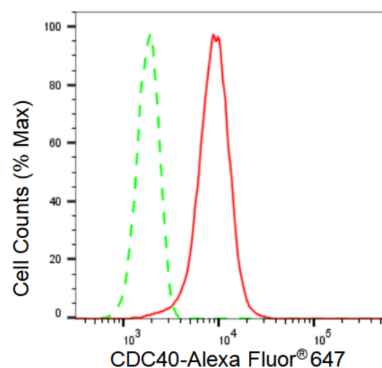
## KD-Validated Anti-CDC40 Rabbit Monoclonal Antibody - Images



Western blotting analysis using anti-CDC40 antibody (Cat#AGI1186). Total cell lysates (30 µg) from various cell lines were loaded and separated by SDS-PAGE. The blot was incubated with anti-CDC40 antibody (Cat#AGI1186, 1:5,000) and HRP-conjugated goat anti-rabbit secondary antibody respectively.

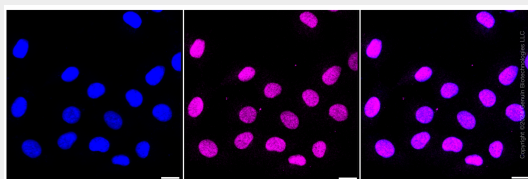


Western blotting analysis using anti-CDC40 antibody (Cat#AGI1186). CDC40 expression in wild type (WT) and CDC40 shRNA knockdown (KD) HeLa cells with 30 µg of total cell lysates. β-Tubulin serves as a loading control. The blot was incubated with anti-CDC40 antibody (Cat#AGI1186, 1:5,000) and HRP-conjugated goat anti-rabbit secondary antibody respectively.



Copyright ©2024 Genun Biotechnologies LLC

Flow cytometric analysis of CDC40 expression in HT-1080 cells using CDC40 antibody (Cat#AGI1186, 1:2,000). Green, isotype control; red, CDC40.



Copyright ©2024 Genun Biotechnologies LLC

Immunocytochemical staining of HT-1080 cells with CDC40 antibody (Cat#AGI1186, 1:1,000). Nuclei were stained blue with DAPI; CDC40 was stained magenta with Alexa Fluor® 647. Images were taken using Leica stellaris 5. Protein abundance based on laser Intensity and smart gain: Medium. Scale bar: 20  $\mu$ m.