

**KD-Validated Anti-CD99 Rabbit Monoclonal Antibody**  
**Rabbit monoclonal antibody**  
**Catalog # AGI1188****Specification**

---

**KD-Validated Anti-CD99 Rabbit Monoclonal Antibody - Product Information**

Application	WB, FC
Primary Accession	<a href="#">P14209</a>
Reactivity	Human
Clonality	Monoclonal
Isotype	Rabbit IgG
Calculated MW	Predicted, 19 kDa , observed, 28 kDa KDa
Gene Name	CD99
Aliases	CD99; CD99 Molecule (Xg Blood Group); CD99 Antigen; MIC2; Antigen Identified By Monoclonal Antibodies 12E7, F21 And O13; T-Cell Surface Glycoprotein E2; E2 Antigen; MIC2X; MIC2Y; Antigen Identified By Monoclonal 12E7, Y Homolog; MIC2 (Monoclonal Antibody 12E7); Cell Surface Antigen HBA-71; Cell Surface Antigen 12E7; Cell Surface Antigen O13; Surface Antigen MIC2; CD99 Molecule; Protein MIC2; HBA71; MSK5X; 12E7
Immunogen	A synthesized peptide derived from human CD99

**KD-Validated Anti-CD99 Rabbit Monoclonal Antibody - Additional Information**

Gene ID	4267
<b>Other Names</b>	CD99 antigen, 12E7, E2 antigen, Protein MIC2, T-cell surface glycoprotein E2, CD99, CD99, MIC2, MIC2X, MIC2Y

**KD-Validated Anti-CD99 Rabbit Monoclonal Antibody - Protein Information****Name** CD99**Synonyms** MIC2, MIC2X, MIC2Y**Function**

Involved in T-cell adhesion processes and in spontaneous rosette formation with erythrocytes. Plays a role in a late step of leukocyte extravasation helping leukocytes to overcome the endothelial basement membrane. Acts at the same site as, but independently of, PECAM1. Involved in T-cell adhesion processes (By similarity).

**Cellular Location**

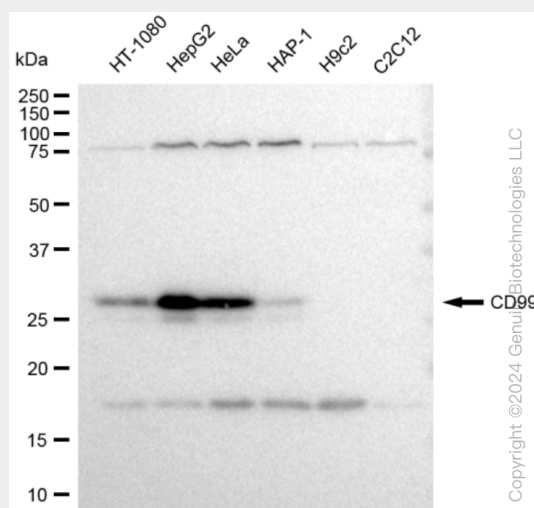
Membrane; Single-pass type I membrane protein

## KD-Validated Anti-CD99 Rabbit Monoclonal Antibody - Protocols

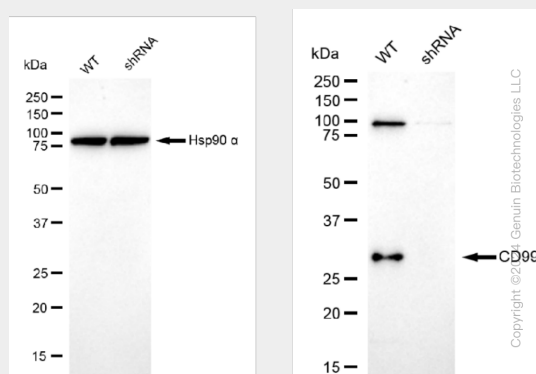
Provided below are standard protocols that you may find useful for product applications.

- [Western Blot](#)
- [Blocking Peptides](#)
- [Dot Blot](#)
- [Immunohistochemistry](#)
- [Immunofluorescence](#)
- [Immunoprecipitation](#)
- [Flow Cytometry](#)
- [Cell Culture](#)

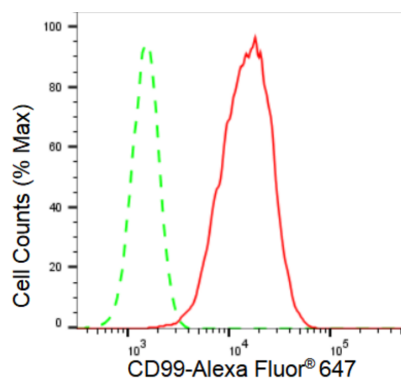
## KD-Validated Anti-CD99 Rabbit Monoclonal Antibody - Images



Western blotting analysis using anti-CD99 antibody (Cat#AGI1188). Total cell lysates (30 µg) from various cell lines were loaded and separated by SDS-PAGE. The blot was incubated with anti-CD99 antibody (Cat#AGI1188, 1:5,000) and HRP-conjugated goat anti-rabbit secondary antibody respectively.



Western blotting analysis using anti-CD99 antibody (Cat#AGI1188). CD99 expression in wild type (WT) and CD99 shRNA knockdown (KD) HeLa cells with 30 µg of total cell lysates. β-Tubulin serves as a loading control. The blot was incubated with anti-CD99 antibody (Cat#AGI1188, 1:5,000) and HRP-conjugated goat anti-rabbit secondary antibody respectively.



Copyright ©2024 Genuin Biotechnologies LLC

Flow cytometric analysis of CD99 expression in HepG2 cells using CD99 antibody (Cat#AGI1188, 1:2,000). Green, isotype control; red, CD99.