

KD-Validated Anti-Dihydrofolate reductase Rabbit Monoclonal Antibody
Rabbit monoclonal antibody
Catalog # AGI1194**Specification**

KD-Validated Anti-Dihydrofolate reductase Rabbit Monoclonal Antibody - Product Information

Application	WB, FC, ICC
Primary Accession	P00374
Reactivity	Rat, Human, Mouse
Clonality	Monoclonal
Isotype	Rabbit IgG
Calculated MW	Predicted, 21 kDa, observed, 18 kDa kDa
Gene Name	DHFR
Aliases	DHFR; Dihydrofolate Reductase; DHFR1; EC 1.5.1.3; DHFRP1; DYR
Immunogen	A synthesized peptide derived from human DHFR

KD-Validated Anti-Dihydrofolate reductase Rabbit Monoclonal Antibody - Additional Information

Gene ID	1719
Other Names	
Dihydrofolate reductase, 1.5.1.3, DHFR	

KD-Validated Anti-Dihydrofolate reductase Rabbit Monoclonal Antibody - Protein Information**Name** DHFR**Function**

Key enzyme in folate metabolism. Contributes to the de novo mitochondrial thymidylate biosynthesis pathway. Catalyzes an essential reaction for de novo glycine and purine synthesis, and for DNA precursor synthesis. Binds its own mRNA and that of DHFR2.

Cellular Location

Mitochondrion {ECO:0000250|UniProtKB:P00375}. Cytoplasm {ECO:0000250|UniProtKB:P00375}

Tissue Location

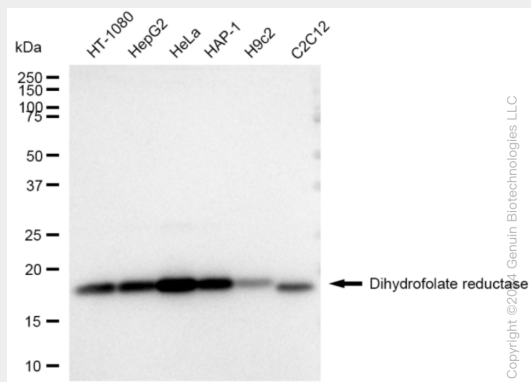
Widely expressed in fetal and adult tissues, including throughout the fetal and adult brains and whole blood Expression is higher in the adult brain than in the fetal brain

KD-Validated Anti-Dihydrofolate reductase Rabbit Monoclonal Antibody - Protocols

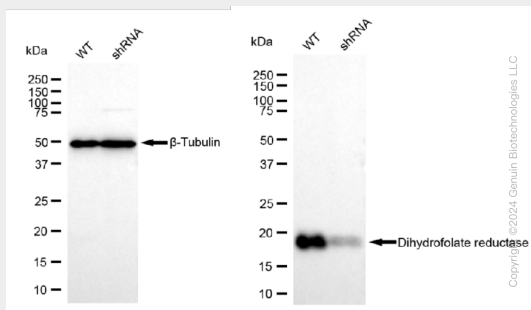
Provided below are standard protocols that you may find useful for product applications.

- [Western Blot](#)
- [Blocking Peptides](#)
- [Dot Blot](#)
- [Immunohistochemistry](#)
- [Immunofluorescence](#)
- [Immunoprecipitation](#)
- [Flow Cytometry](#)
- [Cell Culture](#)

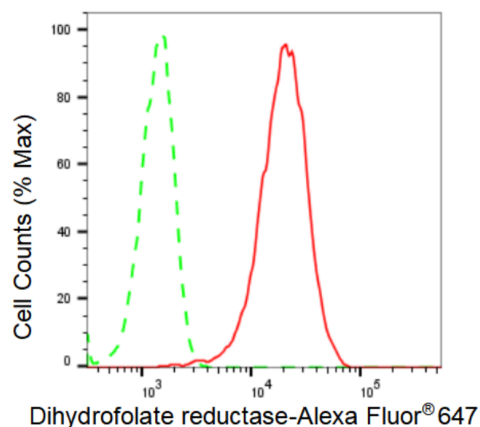
KD-Validated Anti-Dihydrofolate reductase Rabbit Monoclonal Antibody - Images



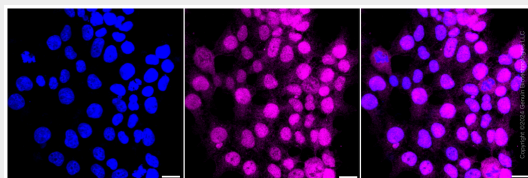
Western blotting analysis using anti-Dihydrofolate reductase antibody (Cat#AGI1194). Total cell lysates (30 µg) from various cell lines were loaded and separated by SDS-PAGE. The blot was incubated with anti-Dihydrofolate reductase antibody (Cat#AGI1194, 1:5,000) and HRP-conjugated goat anti-rabbit secondary antibody respectively.



Western blotting analysis using anti-Dihydrofolate reductase antibody (Cat#AGI1194). Dihydrofolate reductase expression in wild type (WT) and Dihydrofolate reductase shRNA knockdown (KD) HeLa cells with 30 µg of total cell lysates. β-Tubulin serves as a loading control. The blot was incubated with anti-Dihydrofolate reductase antibody (Cat#AGI1194, 1:5,000) and HRP-conjugated goat anti-rabbit secondary antibody respectively.



Flow cytometric analysis of Dihydrofolate reductase expression in HeLa cells using Dihydrofolate reductase antibody (Cat#AGI1194, 1:2,000). Green, isotype control; red, Dihydrofolate reductase.



Immunocytochemical staining of HeLa cells with Dihydrofolate reductase antibody (Cat#AGI1194, 1:1,000). Nuclei were stained blue with DAPI; Dihydrofolate reductase was stained magenta with Alexa Fluor® 647. Images were taken using Leica stellaris 5. Protein abundance based on laser Intensity and smart gain: Medium. Scale bar: 20 µm.