

KD-Validated Anti-Calpain 2 Rabbit Monoclonal Antibody
Rabbit monoclonal antibody
Catalog # AGI1196**Specification****KD-Validated Anti-Calpain 2 Rabbit Monoclonal Antibody - Product Information**

Application	WB, FC, ICC
Primary Accession	P17655
Reactivity	Rat, Human, Mouse
Clonality	Monoclonal
Isotype	Rabbit IgG
Calculated MW	Predicted, 80 kDa, observed, 73 kDa kDa
Gene Name	CAPN2
Aliases	CAPN2; Calpain 2; CANPL2; MCANP; Calcium-Activated Neutral Proteinase; Calpain 2, (M/II) Large Subunit; Calpain-2 Catalytic Subunit; Millimolar-Calpain; Calpain M-Type; EC 3.4.22.53; M-Calpain; CANPml; CANP; Calpain 2, Large [Catalytic] Subunit; Calpain, Large Polypeptide L2; Calpain Large Polypeptide L2; Calpain 2, Large Subunit; Calpain-2 Large Subunit; EC 3.4.22; CANPML; CANP2
Immunogen	A synthesized peptide derived from human Calpain 2

KD-Validated Anti-Calpain 2 Rabbit Monoclonal Antibody - Additional Information

Gene ID	824
Other Names	
Calpain-2 catalytic subunit, 3.4.22.53, Calcium-activated neutral proteinase 2, CANP 2, Calpain M-type, Calpain large polypeptide L2, Calpain-2 large subunit, Millimolar-calpain, M-calpain, CAPN2, CANPL2	

KD-Validated Anti-Calpain 2 Rabbit Monoclonal Antibody - Protein Information**Name** CAPN2**Synonyms** CANPL2**Function**

Calcium-regulated non-lysosomal thiol-protease which catalyzes limited proteolysis of substrates involved in cytoskeletal remodeling and signal transduction. Proteolytically cleaves MYOC at 'Arg-226' (PubMed: <http://www.uniprot.org/citations/17650508> target="_blank">17650508). Proteolytically cleaves CPEB3 following neuronal stimulation which abolishes CPEB3 translational repressor activity, leading to translation of CPEB3 target mRNAs (By similarity).

Cellular Location

Cytoplasm. Cell membrane. Note=Translocates to the plasma membrane upon Ca(2+) binding

Tissue Location

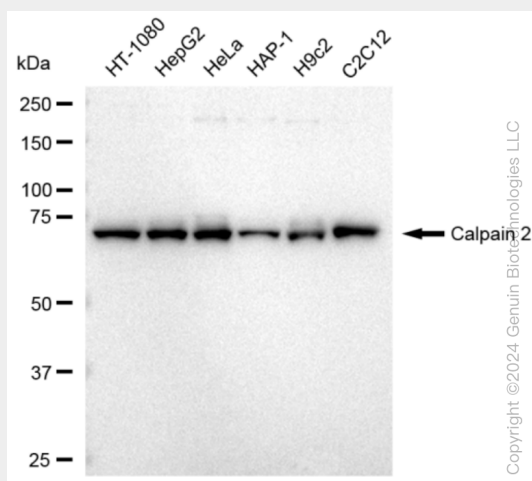
Ubiquitous.

KD-Validated Anti-Calpain 2 Rabbit Monoclonal Antibody - Protocols

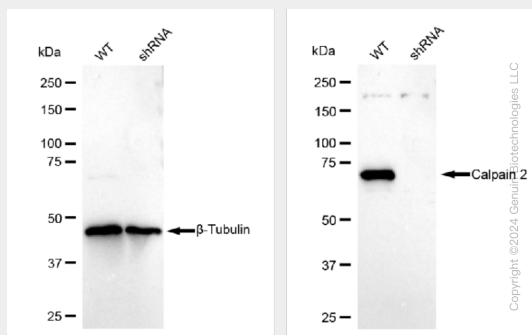
Provided below are standard protocols that you may find useful for product applications.

- [Western Blot](#)
- [Blocking Peptides](#)
- [Dot Blot](#)
- [Immunohistochemistry](#)
- [Immunofluorescence](#)
- [Immunoprecipitation](#)
- [Flow Cytometry](#)
- [Cell Culture](#)

KD-Validated Anti-Calpain 2 Rabbit Monoclonal Antibody - Images

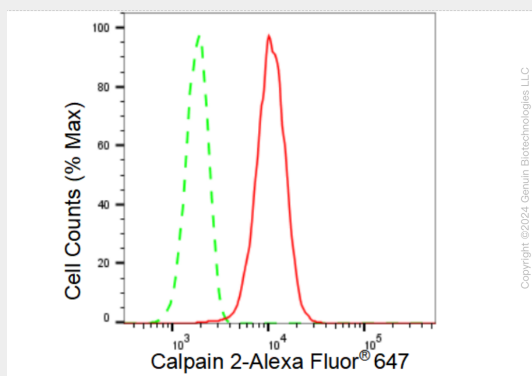


Western blotting analysis using anti-Calpain 2 antibody (Cat#AGI1196). Total cell lysates (30 µg) from various cell lines were loaded and separated by SDS-PAGE. The blot was incubated with anti-Calpain 2 antibody (Cat#AGI1196, 1:5,000) and HRP-conjugated goat anti-rabbit secondary antibody respectively.

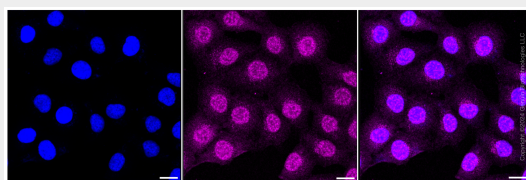


Western blotting analysis using anti-Calpain 2 antibody (Cat#AGI1196). Calpain 2 expression in

wild type (WT) and Calpain 2 shRNA knockdown (KD) HeLa cells with 30 μ g of total cell lysates. β -Tubulin serves as a loading control. The blot was incubated with anti-Calpain 2 antibody (Cat#AGI1196, 1:5,000) and HRP-conjugated goat anti-rabbit secondary antibody respectively.



Flow cytometric analysis of Calpain 2 expression in HT-1080 cells using Calpain 2 antibody (Cat#AGI1196, 1:2,000). Green, isotype control; red, Calpain 2.



Immunocytochemical staining of HT-1080 cells with Calpain 2 antibody (Cat#AGI1196, 1:1,000). Nuclei were stained blue with DAPI; Calpain 2 was stained magenta with Alexa Fluor® 647. Images were taken using Leica stellaris 5. Protein abundance based on laser Intensity and smart gain: Medium. Scale bar: 20 μ m.