

KD-Validated Anti-Calmegin Rabbit Monoclonal Antibody
Rabbit monoclonal antibody
Catalog # AGI1201**Specification**

KD-Validated Anti-Calmegin Rabbit Monoclonal Antibody - Product Information

Application	WB, ICC
Primary Accession	O14967
Reactivity	Human
Clonality	Monoclonal
Isotype	Rabbit IgG
Calculated MW	Predicted, 70 kDa, observed, 80 kDa kDa
Gene Name	CLGN
Aliases	CLGN; Calmegin; Testis Tissue Sperm-Binding Protein Li 79P
Immunogen	A synthesized peptide derived from human Calmegin

KD-Validated Anti-Calmegin Rabbit Monoclonal Antibody - Additional Information

Gene ID	1047
Other Names	
Calmegin, CLGN	

KD-Validated Anti-Calmegin Rabbit Monoclonal Antibody - Protein Information**Name** CLGN**Function**

Functions during spermatogenesis as a chaperone for a range of client proteins that are important for sperm adhesion onto the egg zona pellucida and for subsequent penetration of the zona pellucida. Required for normal sperm migration from the uterus into the oviduct. Required for normal male fertility. Binds calcium ions (By similarity).

Cellular Location

Endoplasmic reticulum membrane; Single-pass type I membrane protein

Tissue Location

Detected in testis (at protein level). Detected in testis.

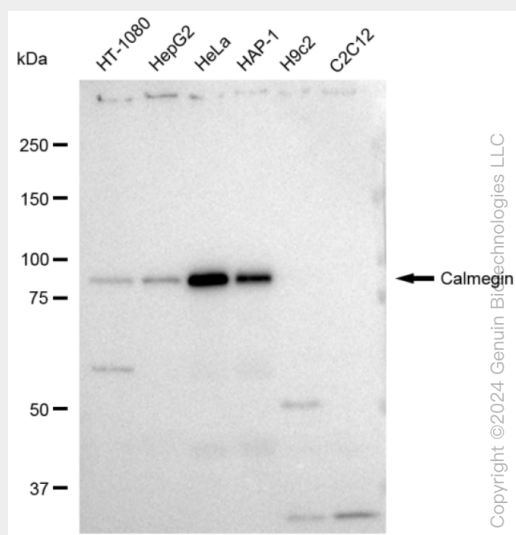
KD-Validated Anti-Calmegin Rabbit Monoclonal Antibody - Protocols

Provided below are standard protocols that you may find useful for product applications.

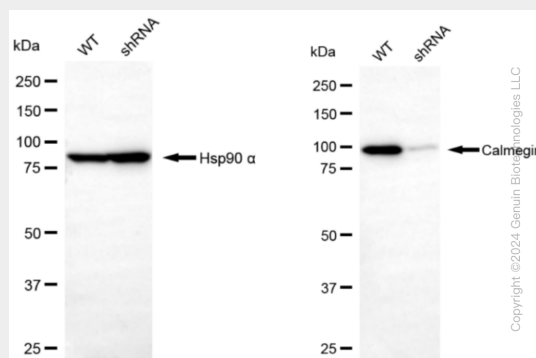
- [Western Blot](#)
- [Blocking Peptides](#)

- [Dot Blot](#)
- [Immunohistochemistry](#)
- [Immunofluorescence](#)
- [Immunoprecipitation](#)
- [Flow Cytometry](#)
- [Cell Culture](#)

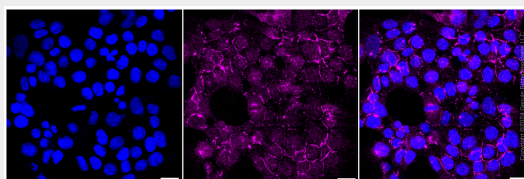
KD-Validated Anti-Calmegin Rabbit Monoclonal Antibody - Images



Western blotting analysis using anti-Calmegin antibody (Cat#AGI1201). Total cell lysates (30 µg) from various cell lines were loaded and separated by SDS-PAGE. The blot was incubated with anti-Calmegin antibody (Cat#AGI1201, 1:5,000) and HRP-conjugated goat anti-rabbit secondary antibody respectively.



Western blotting analysis using anti-Calmegin antibody (Cat#AGI1201). Calmegin expression in wild type (WT) and Calmegin shRNA knockdown (KD) HeLa cells with 30 µg of total cell lysates. β-Tubulin serves as a loading control. The blot was incubated with anti-Calmegin antibody (Cat#AGI1201, 1:5,000) and HRP-conjugated goat anti-rabbit secondary antibody respectively.



Immunocytochemical staining of HeLa cells with Calmegin antibody (Cat#AGI1201, 1:1,000). Nuclei were stained blue with DAPI; Calmegin was stained magenta with Alexa Fluor® 647.

Images were taken using Leica stellaris 5. Protein abundance based on laser Intensity and smart gain: Medium. Scale bar: 20 μ m.