

KD-Validated Anti-CSDE1 Rabbit Monoclonal Antibody
Rabbit monoclonal antibody
Catalog # AGI1206**Specification****KD-Validated Anti-CSDE1 Rabbit Monoclonal Antibody - Product Information**

Application	WB, FC, ICC
Primary Accession	075534
Reactivity	Rat, Human, Mouse
Clonality	Monoclonal
Isotype	Rabbit IgG
Calculated MW	Predicted, 89 kDa , observed, 89 kDa KDa
Gene Name	CSDE1
Aliases	CSDE1; Cold Shock Domain Containing E1; D1S155E; UNR; Cold Shock Domain Containing E1, RNA Binding; Cold Shock Domain-Containing Protein E1; N-Ras Upstream Gene Protein; Upstream Of NRAS; NRAS-Related; Protein UNR; KIAA0885; NRU
Immunogen	A synthesized peptide derived from human CSDE1

KD-Validated Anti-CSDE1 Rabbit Monoclonal Antibody - Additional Information

Gene ID	7812
Other Names	
Cold shock domain-containing protein E1, N-ras upstream gene protein, Protein UNR, CSDE1 (HGNC:29905)	

KD-Validated Anti-CSDE1 Rabbit Monoclonal Antibody - Protein Information**Name** CSDE1 ([HGNC:29905](#))**Function**

RNA-binding protein involved in translationally coupled mRNA turnover (PubMed:11051545, PubMed:15314026). Implicated with other RNA- binding proteins in the cytoplasmic deadenylation/translational and decay interplay of the FOS mRNA mediated by the major coding-region determinant of instability (mCRD) domain (PubMed:11051545, PubMed:15314026). Required for efficient formation of stress granules (PubMed:29395067).

Cellular Location

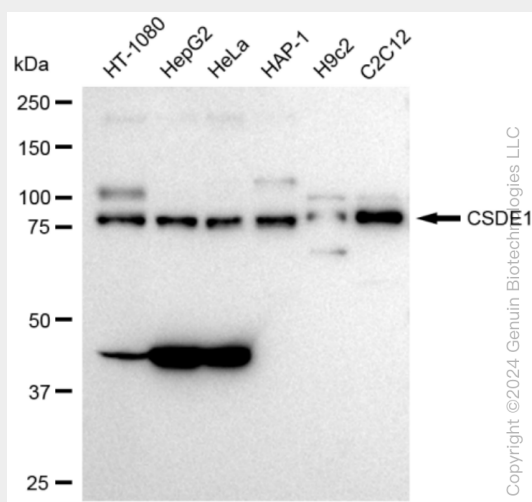
Cytoplasm. Cytoplasm, Stress granule. Cytoplasm, P-body

KD-Validated Anti-CSDE1 Rabbit Monoclonal Antibody - Protocols

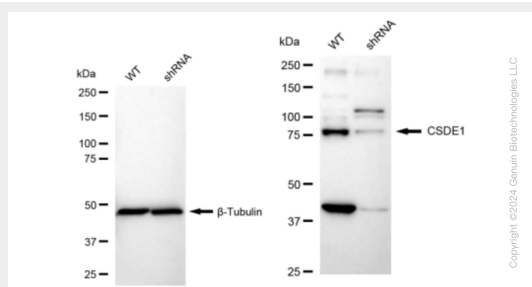
Provided below are standard protocols that you may find useful for product applications.

- [Western Blot](#)
- [Blocking Peptides](#)
- [Dot Blot](#)
- [Immunohistochemistry](#)
- [Immunofluorescence](#)
- [Immunoprecipitation](#)
- [Flow Cytometry](#)
- [Cell Culture](#)

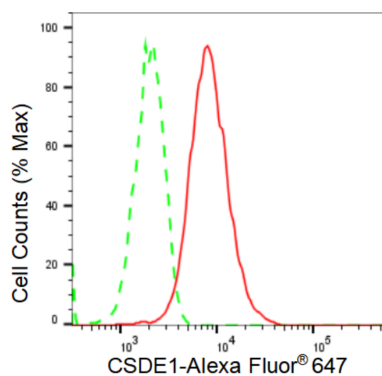
KD-Validated Anti-CSDE1 Rabbit Monoclonal Antibody - Images



Western blotting analysis using anti-CSDE1 antibody (Cat#AGI1206). Total cell lysates (30 µg) from various cell lines were loaded and separated by SDS-PAGE. The blot was incubated with anti-CSDE1 antibody (Cat#AGI1206, 1:5,000) and HRP-conjugated goat anti-rabbit secondary antibody respectively.

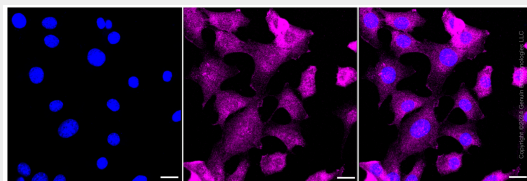


Western blotting analysis using anti-CSDE1 antibody (Cat#AGI1206). CSDE1 expression in wild type (WT) and CSDE1 shRNA knockdown (KD) HeLa cells with 30 µg of total cell lysates. β-Tubulin serves as a loading control. The blot was incubated with anti-CSDE1 antibody (Cat#AGI1206, 1:5,000) and HRP-conjugated goat anti-rabbit secondary antibody respectively.



Copyright ©2024 Genun Biotechnologies LLC

Flow cytometric analysis of CSDE1 expression in C2C12 cells using CSDE1 antibody (Cat#AGI1206, 1:2,000). Green, isotype control; red, CSDE1.



Immunocytochemical staining of C2C12 cells with CSDE1 antibody (Cat#AGI1206, 1:1,000). Nuclei were stained blue with DAPI; CSDE1 was stained magenta with Alexa Fluor® 647. Images were taken using Leica stellaris 5. Protein abundance based on laser Intensity and smart gain: Medium. Scale bar: 20 µm.