

KD-Validated Anti-Alkaline phosphatase Rabbit Monoclonal Antibody
Rabbit monoclonal antibody
Catalog # AGI1213**Specification**

KD-Validated Anti-Alkaline phosphatase Rabbit Monoclonal Antibody - Product Information

Application	WB, FC, ICC
Primary Accession	P09923
Reactivity	Human
Clonality	Monoclonal
Isotype	Rabbit IgG
Calculated MW	Predicted, 57 kDa , observed, 68 kDa KDa
Gene Name	ALPI
Aliases	ALPI; Alkaline Phosphatase, Intestinal; IAP; Intestinal Alkaline Phosphatase; Intestinal-Type Alkaline Phosphatase; EC 3.1.3.1; Alkaline Phosphomonoesterase; Glycerophosphatase; Kasahara Isozyme A synthesized peptide derived from human intestinal alkaline phosphatase
Immunogen	

KD-Validated Anti-Alkaline phosphatase Rabbit Monoclonal Antibody - Additional Information

Gene ID	248
Other Names	
Intestinal-type alkaline phosphatase, IAP, Intestinal alkaline phosphatase, 3.1.3.1, ALPI	

KD-Validated Anti-Alkaline phosphatase Rabbit Monoclonal Antibody - Protein Information**Name** ALPI**Function**

Alkaline phosphatase that can hydrolyze various phosphate compounds.

Cellular Location

Cell membrane {ECO:0000250|UniProtKB:P15693}; Lipid-anchor, GPI-anchor {ECO:0000250|UniProtKB:P15693}

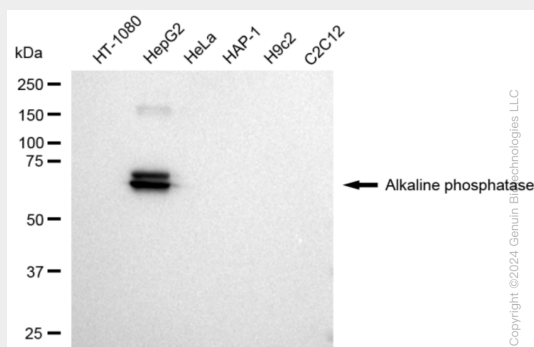
KD-Validated Anti-Alkaline phosphatase Rabbit Monoclonal Antibody - Protocols

Provided below are standard protocols that you may find useful for product applications.

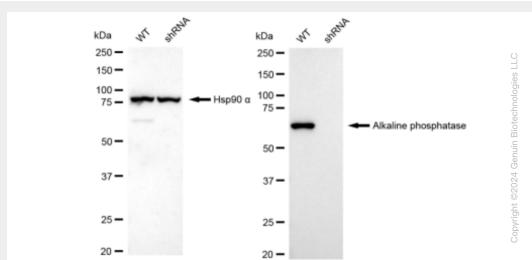
- [Western Blot](#)

- [Blocking Peptides](#)
- [Dot Blot](#)
- [Immunohistochemistry](#)
- [Immunofluorescence](#)
- [Immunoprecipitation](#)
- [Flow Cytometry](#)
- [Cell Culture](#)

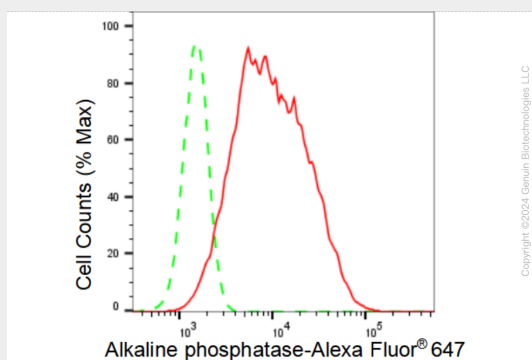
KD-Validated Anti-Alkaline phosphatase Rabbit Monoclonal Antibody - Images



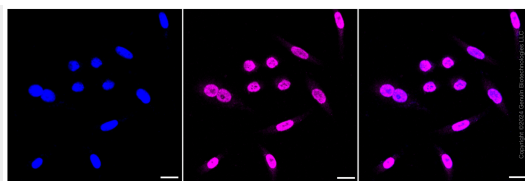
Western blotting analysis using anti-Alkaline phosphatase antibody (Cat#AGI1213). Total cell lysates (30 µg) from various cell lines were loaded and separated by SDS-PAGE. The blot was incubated with anti-Alkaline phosphatase antibody (Cat#AGI1213, 1:5,000) and HRP-conjugated goat anti-rabbit secondary antibody respectively.



Western blotting analysis using anti-Alkaline phosphatase antibody (Cat#AGI1213). Alkaline phosphatase expression in wild type (WT) and Alkaline phosphatase shRNA knockdown (KD) HeLa cells with 30 µg of total cell lysates. Hsp90 α serves as a loading control. The blot was incubated with anti-Alkaline phosphatase antibody (Cat#AGI1213, 1:5,000) and HRP-conjugated goat anti-rabbit secondary antibody respectively.



Flow cytometric analysis of Alkaline phosphatase expression in HepG2 cells using Alkaline phosphatase antibody (Cat#AGI1213, 1:2,000). Green, isotype control; red, Alkaline phosphatase.



Immunocytochemical staining of HepG2 cells with Alkaline phosphatase antibody (Cat#AGI1213, 1:1,000). Nuclei were stained blue with DAPI; Alkaline phosphatase was stained magenta with Alexa Fluor® 647. Images were taken using Leica stellaris 5. Protein abundance based on laser Intensity and smart gain: Medium. Scale bar: 20 μ m.