

**KD-Validated Anti-BCAR1 Rabbit Monoclonal Antibody**  
**Rabbit monoclonal antibody**  
**Catalog # AGI1218****Specification****KD-Validated Anti-BCAR1 Rabbit Monoclonal Antibody - Product Information**

Application	WB, FC
Primary Accession	<a href="#">P56945</a>
Reactivity	Rat, Human, Mouse
Clonality	Monoclonal
Isotype	Rabbit IgG
Calculated MW	Predicted, 93 kDa , observed, 130 kDa
Gene Name	KDa
Aliases	BCAR1
	BCAR1; BCAR1 Scaffold Protein, Cas Family Member; CASS1; CAS; Cas Scaffolding Protein Family Member 1; CRKAS; Breast Cancer Anti-Estrogen Resistance Protein 1; BCAR1, Cas Family Scaffolding Protein; BCAR1, Cas Family Scaffold Protein; P130Cas; Breast Cancer Anti-Estrogen Resistance 1; Crk-Associated Substrate P130Cas; Crk-Associated Substrate; CRK-Associated Substrate; P130CAS; P130cas; Crkas; CAS1
Immunogen	A synthesized peptide derived from human BCAR1

**KD-Validated Anti-BCAR1 Rabbit Monoclonal Antibody - Additional Information**

Gene ID	9564
<b>Other Names</b>	
Breast cancer anti-estrogen resistance protein 1, CRK-associated substrate, Cas scaffolding protein family member 1, p130cas, BCAR1, CAS, CASS1, CRKAS	

**KD-Validated Anti-BCAR1 Rabbit Monoclonal Antibody - Protein Information****Name** BCAR1**Synonyms** CAS, CASS1, CRKAS**Function**

Docking protein which plays a central coordinating role for tyrosine kinase-based signaling related to cell adhesion (PubMed:<a href="http://www.uniprot.org/citations/12432078" target="\_blank">12432078</a>, PubMed:<a href="http://www.uniprot.org/citations/12832404" target="\_blank">12832404</a>). Implicated in induction of cell migration and cell branching (PubMed:<a href="http://www.uniprot.org/citations/12432078" target="\_blank">12432078</a>, PubMed:<a href="http://www.uniprot.org/citations/12832404" target="\_blank">12832404</a>).

PubMed:<a href="http://www.uniprot.org/citations/17038317" target="\_blank">17038317</a>).  
Involved in the BCAR3-mediated inhibition of TGFB signaling (By similarity).

#### Cellular Location

Cell junction, focal adhesion. Cytoplasm Cell projection, axon {ECO:0000250|UniProtKB:Q61140}  
Note=Unphosphorylated form localizes in the cytoplasm (By similarity) Localizes to focal adhesion sites following integrin engagement (By similarity). {ECO:0000250|UniProtKB:Q61140}

#### Tissue Location

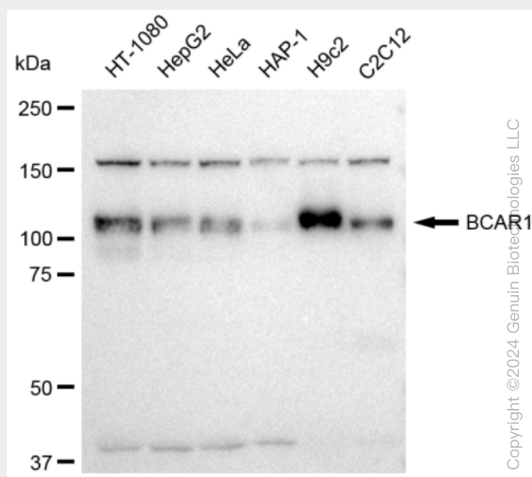
Expressed in B-cells (at protein level) (PubMed:9020138). Widely expressed with an abundant expression in the testis (PubMed:10639512). Low level of expression seen in the liver, thymus, and peripheral blood leukocytes (PubMed:10639512)

### KD-Validated Anti-BCAR1 Rabbit Monoclonal Antibody - Protocols

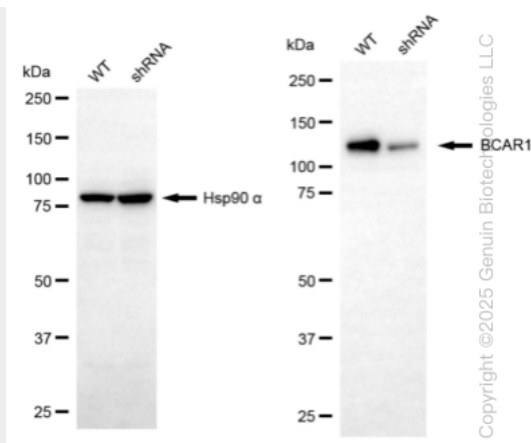
Provided below are standard protocols that you may find useful for product applications.

- [Western Blot](#)
- [Blocking Peptides](#)
- [Dot Blot](#)
- [Immunohistochemistry](#)
- [Immunofluorescence](#)
- [Immunoprecipitation](#)
- [Flow Cytometry](#)
- [Cell Culture](#)

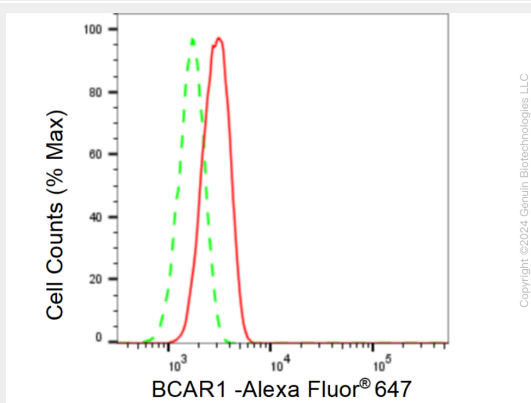
### KD-Validated Anti-BCAR1 Rabbit Monoclonal Antibody - Images



Western blotting analysis using anti-BCAR1 antibody (Cat#AGI1218). Total cell lysates (30 µg) from various cell lines were loaded and separated by SDS-PAGE. The blot was incubated with anti-BCAR1 antibody (Cat#AGI1218, 1:5,000) and HRP-conjugated goat anti-rabbit secondary antibody respectively.



Western blotting analysis using anti-BCAR1 antibody (Cat#AGI1218). BCAR1 expression in wild type (WT) and BCAR1 shRNA knockdown (KD) HeLa cells with 20 µg of Total cell lysates. Hsp90 α serves as a loading control. The blot was incubated with anti-BCAR1 antibody (Cat#AGI1218, 1:5,000) and HRP-conjugated goat anti rabbit secondary antibody respectively.



Flow cytometric analysis of BCAR1 expression in H9c2 cells using BCAR1 antibody (Cat#AGI1218, 1:2,000). Green, isotype control; red, BCAR1.