

KD-Validated Anti-Casein kinase 2 beta Rabbit Monoclonal Antibody
Rabbit monoclonal antibody
Catalog # AGI1219**Specification****KD-Validated Anti-Casein kinase 2 beta Rabbit Monoclonal Antibody - Product Information**

Application	WB, ICC
Primary Accession	P67870
Reactivity	Rat, Human, Mouse
Clonality	Monoclonal
Isotype	Rabbit IgG
Calculated MW	Predicted, 25 kDa , observed, 25 kDa KDa
Gene Name	CSNK2B
Aliases	CSNK2B; Casein Kinase 2 Beta; Casein Kinase 2, Beta Polypeptide; Casein Kinase II Subunit Beta; Protein G5a; CK II Beta; Phosvitin; Ckb1; Ckb2; CK2N; G5A; Alternative Name: G5a, Phosvitin; Casein Kinase II Beta Subunit; CSNK2B-LY6G5B-1072; CSNK2B-LY6G5B-1103; CSNK2B-LY6G5B-532; CSNK2B-LY6G5B-560; CSNK2B-LY6G5B-562; POBINDS; CSK2B; CK2B; CKB1; CKB2
Immunogen	A synthesized peptide derived from human Casein Kinase 2 beta

KD-Validated Anti-Casein kinase 2 beta Rabbit Monoclonal Antibody - Additional Information

Gene ID	1460
Other Names	
Casein kinase II subunit beta, CK II beta, Phosvitin, Protein G5a, CSNK2B (HGNC:2460), CK2N, G5A	

KD-Validated Anti-Casein kinase 2 beta Rabbit Monoclonal Antibody - Protein Information**Name** CSNK2B ([HGNC:2460](#))**Synonyms** CK2N, G5A**Function**

Regulatory subunit of casein kinase II/CK2. As part of the kinase complex regulates the basal catalytic activity of the alpha subunit a constitutively active serine/threonine-protein kinase that

phosphorylates a large number of substrates containing acidic residues C-terminal to the phosphorylated serine or threonine (PubMed: [11239457](http://www.uniprot.org/citations/11239457), PubMed: [16818610](http://www.uniprot.org/citations/16818610)). Participates in Wnt signaling (By similarity).

Cellular Location

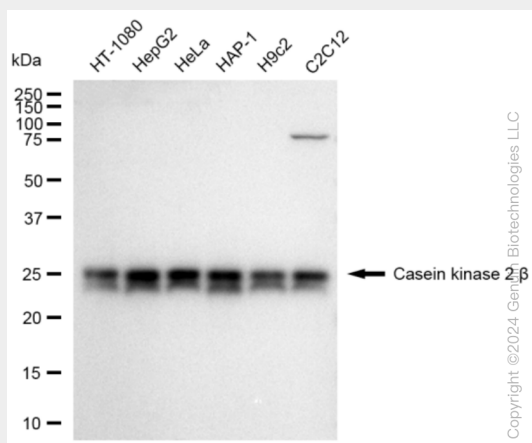
Nucleus.

KD-Validated Anti-Casein kinase 2 beta Rabbit Monoclonal Antibody - Protocols

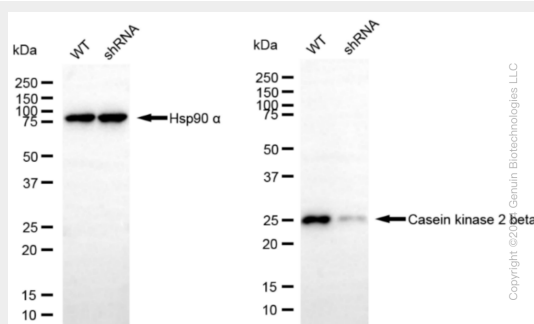
Provided below are standard protocols that you may find useful for product applications.

- [Western Blot](#)
- [Blocking Peptides](#)
- [Dot Blot](#)
- [Immunohistochemistry](#)
- [Immunofluorescence](#)
- [Immunoprecipitation](#)
- [Flow Cytometry](#)
- [Cell Culture](#)

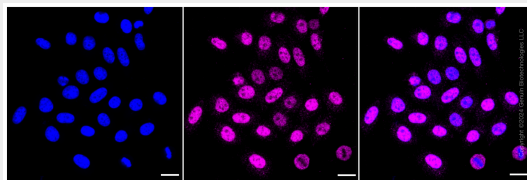
KD-Validated Anti-Casein kinase 2 beta Rabbit Monoclonal Antibody - Images



Western blotting analysis using anti-Casein kinase 2 beta antibody (Cat#61434). Total cell lysates (30 µg) from various cell lines were loaded and separated by SDS-PAGE. The blot was incubated with anti-Casein kinase 2 beta antibody (Cat#61434, 1:5,000) and HRP-conjugated goat anti-rabbit secondary antibody (Cat#201, 1:20,000) respectively. Image was developed using FeQ™ ECL Substrate Kit (Cat#226).



Western blotting analysis using anti-Casein kinase 2 beta antibody (Cat#61434). Casein kinase 2 beta expression in wild type (WT) and Casein kinase 2 beta shRNA knockdown (KD) HeLa cells with 30 μ g of total cell lysates. β -Tubulin serves as a loading control. The blot was incubated with anti-Casein kinase 2 beta antibody (Cat#61434, 1:5,000) and HRP-conjugated goat anti-rabbit secondary antibody (Cat#201, 1:20,000) respectively. Image was developed using FeQ™ ECL Substrate Kit (Cat#226).



Immunocytochemical staining of HepG2 cells with Casein kinase 2 beta antibody (Cat#61434, 1:1,000). Nuclei were stained blue with DAPI; Casein kinase 2 beta was stained magenta with Alexa Fluor® 647. Images were taken using Leica stellaris 5. Protein abundance based on laser Intensity and smart gain: Medium. Scale bar: 20 μ m.