

KD-Validated Anti-B cell receptor associated protein 31 Rabbit Monoclonal Antibody
Rabbit monoclonal antibody
Catalog # AGI1221**Specification****KD-Validated Anti-B cell receptor associated protein 31 Rabbit Monoclonal Antibody - Product Information**

Application	WB, FC, ICC
Primary Accession	P51572
Reactivity	Human, Mouse
Clonality	Monoclonal
Isotype	Rabbit IgG
Calculated MW	Predicted, 28 kDa , observed, 25 kDa KDa
Gene Name	BCAP31
Aliases	BCAP31; B Cell Receptor Associated Protein 31; DXS1357E; BAP31; CDM; B-Cell Receptor-Associated Protein 31; 6C6-AG Tumor-Associated Antigen; 6C6-AG; BCR-Associated Protein Bap31; BCR-Associated Protein 31; MICRODELXq28; Protein CDM; P28 Bap31; DELXQ28; 6C6-Ag; Bap31; DDCH; P28
Immunogen	A synthetic peptide of human BCAP31

KD-Validated Anti-B cell receptor associated protein 31 Rabbit Monoclonal Antibody - Additional InformationGene ID **10134****Other Names**

B-cell receptor-associated protein 31, BCR-associated protein 31, Bap31, 6C6-AG tumor-associated antigen, Protein CDM, p28, BCAP31 (HGNC:16695)

KD-Validated Anti-B cell receptor associated protein 31 Rabbit Monoclonal Antibody - Protein Information**Name** BCAP31 ([HGNC:16695](#))**Function**

Functions as a chaperone protein (PubMed:18287538, PubMed:9396746). Is one of the most abundant endoplasmic reticulum (ER) proteins (PubMed:18287538, PubMed:9396746). Plays a role in the export of secreted proteins in the ER, the recognition of abnormally folded protein and their targeting to the ER associated-degradation (ERAD) (PubMed:18287538, PubMed:9396746).

href="http://www.uniprot.org/citations/9396746" target="_blank">9396746). Also serves as a cargo receptor for the export of transmembrane proteins (By similarity). Plays a role in the assembly of the mitochondrial membrane respiratory chain NADH dehydrogenase (Complex I) by stimulating the translocation of NDUFS4 and NDUF11 from the cytosol to the mitochondria via interaction with TOMM40 (PubMed:31206022). In response to ER stress, delocalizes from the ER-mitochondria contact sites and binds BCL2 (PubMed:31206022). May be involved in CASP8-mediated apoptosis (PubMed:10958671).

Cellular Location

Endoplasmic reticulum membrane; Multi-pass membrane protein Endoplasmic reticulum-Golgi intermediate compartment membrane; Multi-pass membrane protein. Note=May shuttle between the ER and the intermediate compartment/cis-Golgi complex (PubMed:9396746). Associates with the mitochondria-associated endoplasmic reticulum membrane via interaction with TOMM40 (PubMed:31206022)

Tissue Location

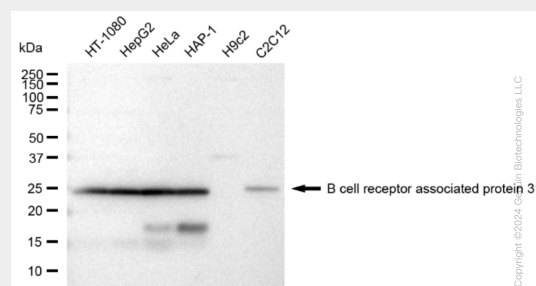
Ubiquitous. Highly expressed in neurons and discrete endocrine cells.

KD-Validated Anti-B cell receptor associated protein 31 Rabbit Monoclonal Antibody - Protocols

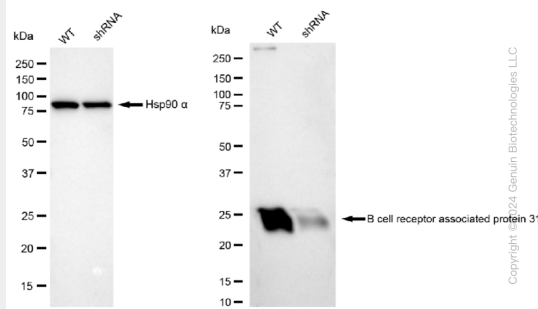
Provided below are standard protocols that you may find useful for product applications.

- [Western Blot](#)
- [Blocking Peptides](#)
- [Dot Blot](#)
- [Immunohistochemistry](#)
- [Immunofluorescence](#)
- [Immunoprecipitation](#)
- [Flow Cytometry](#)
- [Cell Culture](#)

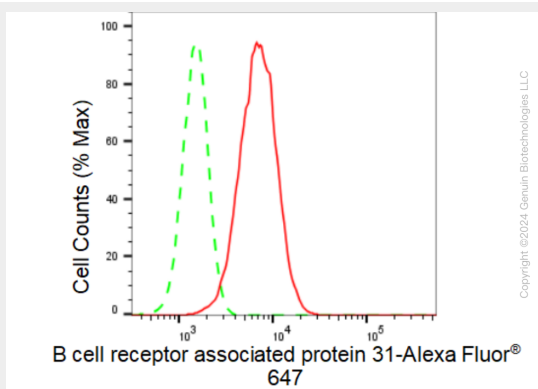
KD-Validated Anti-B cell receptor associated protein 31 Rabbit Monoclonal Antibody - Images



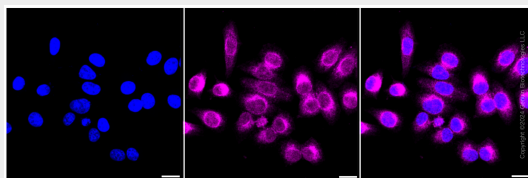
Western blotting analysis using anti-B cell receptor associated protein 31 antibody (Cat#AG1221). Total cell lysates (30 µg) from various cell lines were loaded and separated by SDS-PAGE. The blot was incubated with anti-B cell receptor associated protein 31 antibody (Cat#AG1221, 1:5,000) and HRP-conjugated goat anti-rabbit secondary antibody respectively.



Western blotting analysis using anti-B cell receptor associated protein 31 antibody (Cat#AGI1221). B cell receptor associated protein 31 expression in wild type (WT) and B cell receptor associated protein 31 shRNA knockdown (KD) HeLa cells with 30 μ g of total cell lysates. β -Tubulin serves as a loading control. The blot was incubated with anti-B cell receptor associated protein 31 antibody (Cat#AGI1221, 1:5,000) and HRP-conjugated goat anti-rabbit secondary antibody respectively.



Flow cytometric analysis of B cell receptor associated protein 31 expression in HepG2 cells using B cell receptor associated protein 31 antibody (Cat#AGI1221, 1:2,000). Green, isotype control; red, B cell receptor associated protein 31.



Immunocytochemical staining of HepG2 cells with B cell receptor associated protein 31 antibody (Cat#AGI1221, 1:1,000). Nuclei were stained blue with DAPI; B cell receptor associated protein 31 was stained magenta with Alexa Fluor[®] 647. Images were taken using Leica stellaris 5. Protein abundance based on laser Intensity and smart gain: Medium. Scale bar: 20 μ m.