

KD-Validated Anti-CHAF1B Rabbit Monoclonal Antibody
Rabbit monoclonal antibody
Catalog # AGI1222**Specification****KD-Validated Anti-CHAF1B Rabbit Monoclonal Antibody - Product Information**

Application	WB, FC
Primary Accession	Q13112
Reactivity	Human
Clonality	Monoclonal
Isotype	Rabbit IgG
Calculated MW	Predicted, 61 kDa , observed, 70 kDa KDa
Gene Name	CHAF1B
Aliases	CHAF1B; Chromatin Assembly Factor 1 Subunit B; MPHOSPH7; CAF1P60; CAF1A; MPP7; M-Phase Phosphoprotein 7; CAF-1; CAF1; Human Chromatin Assembly Factor-I P60 Subunit; Chromatin Assembly Factor I P60 Subunit; CAF-I 60 KDa Subunit; CAF-1 Subunit B; CAF-I P60; Chromatin Assembly Factor 1, Subunit B (P60); Chromatin Assembly Factor I, P60 Subunit; CAF-IP60
Immunogen	A synthesized peptide derived from human p60 CAF1

KD-Validated Anti-CHAF1B Rabbit Monoclonal Antibody - Additional Information

Gene ID	8208
Other Names	Chromatin assembly factor 1 subunit B, CAF-1 subunit B, Chromatin assembly factor I p60 subunit, CAF-I 60 kDa subunit, CAF-I p60, M-phase phosphoprotein 7, CHAF1B (hgnc_id=1911)

KD-Validated Anti-CHAF1B Rabbit Monoclonal Antibody - Protein Information**Name** CHAF1B ([HGNC:1911](#))**Function**

Acts as a component of the histone chaperone complex chromatin assembly factor 1 (CAF-1), which assembles histone octamers onto DNA during replication and repair. CAF-1 performs the first step of the nucleosome assembly process, bringing newly synthesized histones H3 and H4 to replicating DNA; histones H2A/H2B can bind to this chromatin precursor subsequent to DNA replication to complete the histone octamer.

Cellular Location

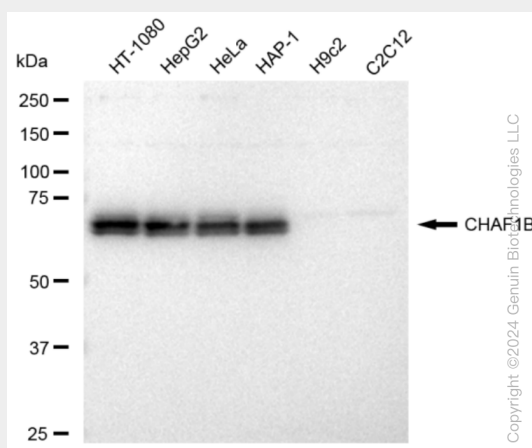
Nucleus. Cytoplasm. Note=DNA replication foci. Cytoplasmic in M phase

KD-Validated Anti-CHAF1B Rabbit Monoclonal Antibody - Protocols

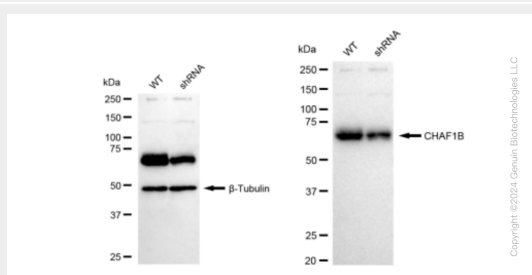
Provided below are standard protocols that you may find useful for product applications.

- [Western Blot](#)
- [Blocking Peptides](#)
- [Dot Blot](#)
- [Immunohistochemistry](#)
- [Immunofluorescence](#)
- [Immunoprecipitation](#)
- [Flow Cytometry](#)
- [Cell Culture](#)

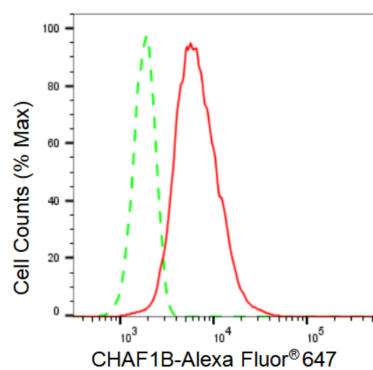
KD-Validated Anti-CHAF1B Rabbit Monoclonal Antibody - Images



Western blotting analysis using anti-CHAF1B antibody (Cat#AGI1222). Total cell lysates (30 µg) from various cell lines were loaded and separated by SDS-PAGE. The blot was incubated with anti-CHAF1B antibody (Cat#AGI1222, 1:5,000) and HRP-conjugated goat anti-rabbit secondary antibody respectively.



Western blotting analysis using anti-CHAF1B antibody (Cat#AGI1222). CHAF1B expression in wild type (WT) and CHAF1B shRNA knockdown (KD) HeLa cells with 30 µg of total cell lysates. β-Tubulin serves as a loading control. The blot was incubated with anti-CHAF1B antibody (Cat#AGI1222, 1:5,000) and HRP-conjugated goat anti-rabbit secondary antibody respectively.



Flow cytometric analysis of CHAF1B expression in HT-1080 cells using CHAF1B antibody (Cat#AGI1222, 1:2,000). Green, isotype control; red, CHAF1B.