

KD-Validated Anti-Catechol-O-methyltransferase Rabbit Monoclonal Antibody
Rabbit monoclonal antibody
Catalog # AGI1224**Specification****KD-Validated Anti-Catechol-O-methyltransferase Rabbit Monoclonal Antibody - Product Information**

Application	WB, FC
Primary Accession	P21964
Reactivity	Rat, Human
Clonality	Monoclonal
Isotype	Rabbit IgG
Calculated MW	Predicted, 30 kDa , observed, 24,28 kDa
Gene Name	COMT
Aliases	COMT; Catechol-O-Methyltransferase; Catechol O-Methyltransferase; EC 2.1.1.6; Epididymis Secretory Sperm Binding Protein Li 98n; Testicular Tissue Protein Li 42; HEL-S-98n
Immunogen	A synthesized peptide derived from human COMT

KD-Validated Anti-Catechol-O-methyltransferase Rabbit Monoclonal Antibody - Additional Information

Gene ID	1312
Other Names	
Catechol O-methyltransferase, 2.1.1.6, COMT (HGNC:2228)	

KD-Validated Anti-Catechol-O-methyltransferase Rabbit Monoclonal Antibody - Protein Information**Name** COMT ([HGNC:2228](#))**Function**

Catalyzes the O-methylation, and thereby the inactivation, of catecholamine neurotransmitters and catechol hormones. Also shortens the biological half-lives of certain neuroactive drugs, like L-DOPA, alpha-methyl DOPA and isoproterenol.

Cellular Location

[Isoform Soluble]: Cytoplasm

Tissue Location

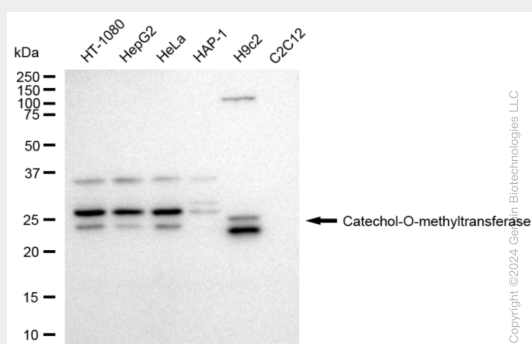
Brain, liver, placenta, lymphocytes and erythrocytes

KD-Validated Anti-Catechol-O-methyltransferase Rabbit Monoclonal Antibody - Protocols

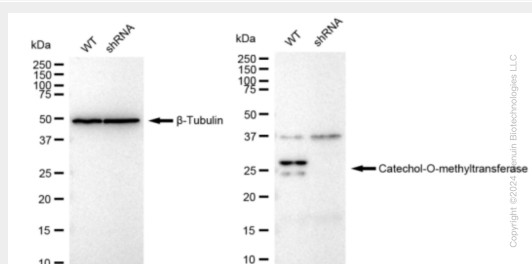
Provided below are standard protocols that you may find useful for product applications.

- [Western Blot](#)
- [Blocking Peptides](#)
- [Dot Blot](#)
- [Immunohistochemistry](#)
- [Immunofluorescence](#)
- [Immunoprecipitation](#)
- [Flow Cytometry](#)
- [Cell Culture](#)

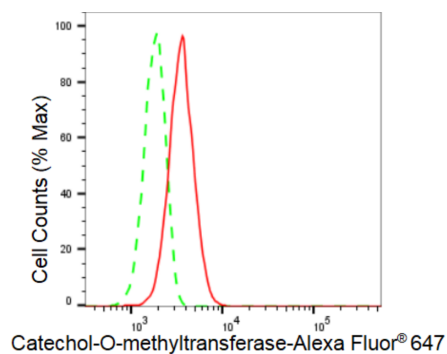
KD-Validated Anti-Catechol-O-methyltransferase Rabbit Monoclonal Antibody - Images



Western blotting analysis using anti-Catechol-O-methyltransferase antibody (Cat#AGI1224). Total cell lysates (30 µg) from various cell lines were loaded and separated by SDS-PAGE. The blot was incubated with anti-Catechol-O-methyltransferase antibody (Cat#AGI1224, 1:5,000) and HRP-conjugated goat anti-rabbit secondary antibody respectively.



Western blotting analysis using anti-Catechol-O-methyltransferase antibody (Cat#AGI1224). Catechol-O-methyltransferase expression in wild type (WT) and Catechol-O-methyltransferase shRNA knockdown (KD) HeLa cells with 30 µg of total cell lysates. β-Tubulin serves as a loading control. The blot was incubated with anti-Catechol-O-methyltransferase antibody (Cat#AGI1224, 1:5,000) and HRP-conjugated goat anti-rabbit secondary antibody respectively.



Flow cytometric analysis of Catechol-O-methyltransferase expression in HT-1080 cells using Catechol-O-methyltransferase antibody (Cat#AGI1224, 1:2,000). Green, isotype control; red, Catechol-O-methyltransferase.