

KD-Validated Anti-Cystathionine beta-synthase Rabbit Monoclonal Antibody
Rabbit monoclonal antibody
Catalog # AGI1226**Specification****KD-Validated Anti-Cystathionine beta-synthase Rabbit Monoclonal Antibody - Product Information**

Application	WB, FC, ICC
Primary Accession	P35520
Reactivity	Human
Clonality	Monoclonal
Isotype	Rabbit IgG
Calculated MW	Predicted, 61 kDa , observed, 61 kDa KDa
Gene Name	CBS
Aliases	CBS; Cystathionine Beta-Synthase; HIP4; Serine Sulphydrase; Beta-Thionase; EC 4.2.1.22; Cystathionine Beta-Synthase-Like Protein; Cystathionine-Beta-Synthase; Methylcysteine Synthase; CBSL
Immunogen	A synthesized peptide derived from human CBS

KD-Validated Anti-Cystathionine beta-synthase Rabbit Monoclonal Antibody - Additional Information

Gene ID	102724560;875
Other Names	
Cystathionine beta-synthase, 4.2.1.22, Beta-thionase, Serine sulphydrase, CBS	

KD-Validated Anti-Cystathionine beta-synthase Rabbit Monoclonal Antibody - Protein Information**Name** CBS**Function**

Hydro-lyase catalyzing the first step of the transsulfuration pathway, where the hydroxyl group of L-serine is displaced by L- homocysteine in a beta-replacement reaction to form L-cystathionine, the precursor of L-cysteine. This catabolic route allows the elimination of L-methionine and the toxic metabolite L-homocysteine (PubMed:20506325, PubMed:23974653, PubMed:23981774). Also involved in the production of hydrogen sulfide, a gasotransmitter with signaling and cytoprotective effects on neurons (By similarity).

Cellular Location

Cytoplasm. Nucleus

Tissue Location

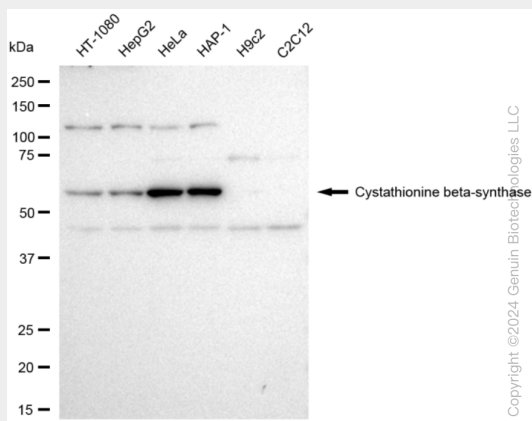
In the adult strongly expressed in liver and pancreas, some expression in heart and brain, weak expression in lung and kidney. In the fetus, expressed in brain, liver and kidney

KD-Validated Anti-Cystathionine beta-synthase Rabbit Monoclonal Antibody - Protocols

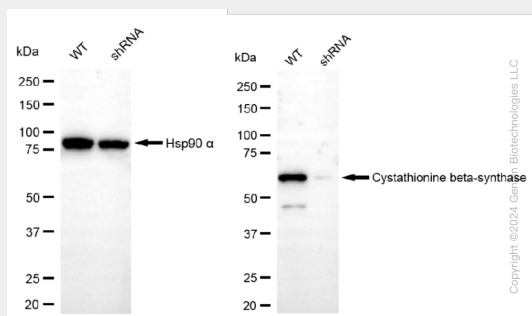
Provided below are standard protocols that you may find useful for product applications.

- [Western Blot](#)
- [Blocking Peptides](#)
- [Dot Blot](#)
- [Immunohistochemistry](#)
- [Immunofluorescence](#)
- [Immunoprecipitation](#)
- [Flow Cytometry](#)
- [Cell Culture](#)

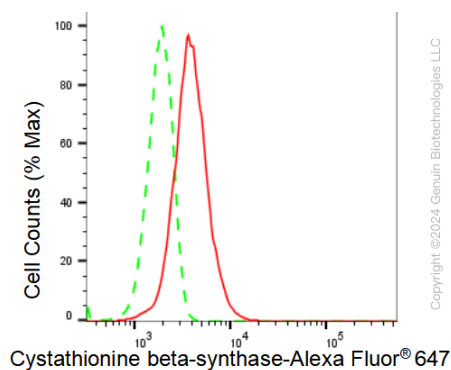
KD-Validated Anti-Cystathionine beta-synthase Rabbit Monoclonal Antibody - Images



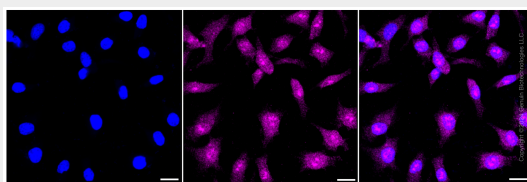
Western blotting analysis using anti-Cystathionine beta-synthase antibody (Cat#AGI1226). Total cell lysates (30 µg) from various cell lines were loaded and separated by SDS-PAGE. The blot was incubated with anti-Cystathionine beta-synthase antibody (Cat#AGI1226, 1:5,000) and HRP-conjugated goat anti-rabbit secondary antibody respectively.



Western blotting analysis using anti-Cystathionine beta-synthase antibody (Cat#AGI1226). Cystathionine beta-synthase expression in wild type (WT) and Cystathionine beta-synthase shRNA knockdown (KD) HeLa cells with 30 µg of total cell lysates. Hsp90 α serves as a loading control. The blot was incubated with anti-Cystathionine beta-synthase antibody (Cat#AGI1226, 1:5,000) and HRP-conjugated goat anti-rabbit secondary antibody respectively.



Flow cytometric analysis of Cystathionine beta-synthase expression in HeLa cells using Cystathionine beta-synthase antibody (Cat#AGI1226, 1:2,000). Green, isotype control; red, Cystathionine beta-synthase.



Immunocytochemical staining of HeLa cells with Cystathionine beta-synthase antibody (Cat#AGI1226, 1:1,000). Nuclei were stained blue with DAPI; Cystathionine beta-synthase was stained magenta with Alexa Fluor® 647. Images were taken using Leica stellaris 5. Protein abundance based on laser Intensity and smart gain: Medium. Scale bar: 20 µm.