

**KD-Validated Anti-Calpain small subunit 1 Rabbit Monoclonal Antibody**  
**Rabbit monoclonal antibody**  
**Catalog # AGI1230****Specification****KD-Validated Anti-Calpain small subunit 1 Rabbit Monoclonal Antibody - Product Information**

Application	WB, FC, ICC
Primary Accession	<a href="#">P04632</a>
Reactivity	Human
Clonality	Monoclonal
Isotype	Rabbit IgG
Calculated MW	Predicted, 28 kDa , observed, 28 kDa
Gene Name	KDa
Aliases	CAPNS1 CAPNS1; Calpain Small Subunit 1; CDPS; CANPS; CAPN4; CANP; Calcium-Activated Neutral Proteinase Small Subunit; Calcium-Dependent Protease Small Subunit 1; Calpain Regulatory Subunit; CANP Small Subunit; CSS1; 30K; Epididymis Secretory Sperm Binding Protein; Calcium-Dependent Protease, Small Subunit; Calcium-Dependent Protease Small Subunit; Calpain 4, Small Subunit (30K); Calpain, Small Polypeptide; CALPAIN4; CAPNS
Immunogen	A synthesized peptide derived from human Calpain small subunit 1

**KD-Validated Anti-Calpain small subunit 1 Rabbit Monoclonal Antibody - Additional Information**

Gene ID	826
<b>Other Names</b>	
Calpain small subunit 1, CSS1, Calcium-activated neutral proteinase small subunit, CANP small subunit, Calcium-dependent protease small subunit, CDPS, Calcium-dependent protease small subunit 1, Calpain regulatory subunit, CAPNS1, CAPN4, CAPNS	

**KD-Validated Anti-Calpain small subunit 1 Rabbit Monoclonal Antibody - Protein Information****Name** CAPNS1**Synonyms** CAPN4, CAPNS**Function**

Regulatory subunit of the calcium-regulated non-lysosomal thiol-protease which catalyzes limited proteolysis of substrates involved in cytoskeletal remodeling and signal transduction. Essential for

embryonic development (By similarity).

#### Cellular Location

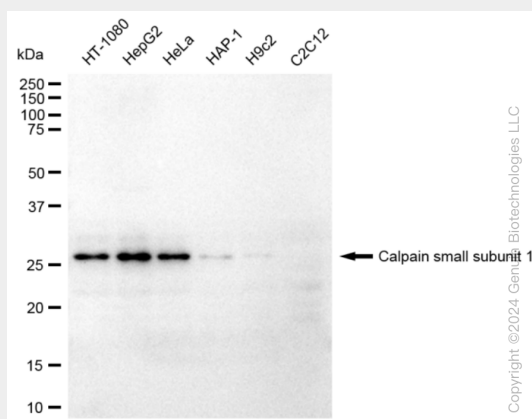
Cytoplasm. Cell membrane. Note=Translocates to the plasma membrane upon calcium binding.

### KD-Validated Anti-Calpain small subunit 1 Rabbit Monoclonal Antibody - Protocols

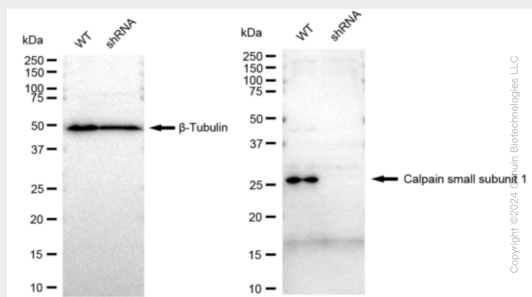
Provided below are standard protocols that you may find useful for product applications.

- [Western Blot](#)
- [Blocking Peptides](#)
- [Dot Blot](#)
- [Immunohistochemistry](#)
- [Immunofluorescence](#)
- [Immunoprecipitation](#)
- [Flow Cytometry](#)
- [Cell Culture](#)

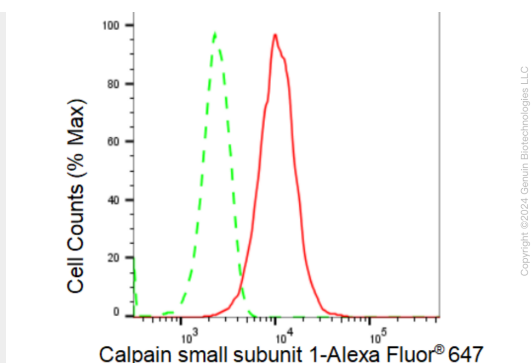
### KD-Validated Anti-Calpain small subunit 1 Rabbit Monoclonal Antibody - Images



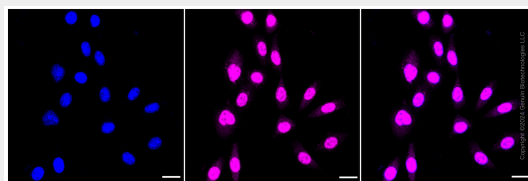
Western blotting analysis using anti-Calpain small subunit 1 antibody (Cat#AGI1230). Total cell lysates (30 µg) from various cell lines were loaded and separated by SDS-PAGE. The blot was incubated with anti-Calpain small subunit 1 antibody (Cat#AGI1230, 1:5,000) and HRP-conjugated goat anti-rabbit secondary antibody respectively.



Western blotting analysis using anti-Calpain small subunit 1 antibody (Cat#AGI1230). Calpain small subunit 1 expression in wild type (WT) and Calpain small subunit 1 shRNA knockdown (KD) HeLa cells with 30 µg of total cell lysates. β-Tubulin serves as a loading control. The blot was incubated with anti-Calpain small subunit 1 antibody (Cat#AGI1230, 1:5,000) and HRP-conjugated goat anti-rabbit secondary antibody respectively.



Flow cytometric analysis of Calpain small subunit 1 expression in HepG2 cells using Calpain small subunit 1 antibody (Cat#AGI1230, 1:2,000). Green, isotype control; red, Calpain small subunit 1.



Immunocytochemical staining of HepG2 cells with Calpain small subunit 1 antibody (Cat#AGI1230, 1:1,000). Nuclei were stained blue with DAPI; Calpain small subunit 1 was stained magenta with Alexa Fluor® 647. Images were taken using Leica stellaris 5. Protein abundance based on laser Intensity and smart gain: Medium. Scale bar: 20 µm.