

**KD-Validated Anti-ADP ribosylation factor 5 Rabbit Monoclonal Antibody**  
**Rabbit monoclonal antibody**  
**Catalog # AGI1233****Specification**

---

**KD-Validated Anti-ADP ribosylation factor 5 Rabbit Monoclonal Antibody - Product Information**

Application	WB, FC, ICC
Primary Accession	<a href="#">P84085</a>
Reactivity	Rat, Human, Mouse
Clonality	Monoclonal
Isotype	Rabbit IgG
Calculated MW	Predicted, 21 kDa , observed, 18 kDa KDa
Gene Name	ARF5
Aliases	ARF5; ADP Ribosylation Factor 5; ADP-Ribosylation Factor 5
Immunogen	A synthesized peptide derived from human ARF5

**KD-Validated Anti-ADP ribosylation factor 5 Rabbit Monoclonal Antibody - Additional Information**

Gene ID	381
<b>Other Names</b>	
ADP-ribosylation factor 5, ARF5	

**KD-Validated Anti-ADP ribosylation factor 5 Rabbit Monoclonal Antibody - Protein Information****Name** ARF5**Function**

GTP-binding protein involved in protein trafficking; may modulate vesicle budding and uncoating within the Golgi apparatus.

**Cellular Location**

Golgi apparatus. Cytoplasm, perinuclear region. Membrane; Lipid-anchor. Golgi apparatus, trans-Golgi network membrane {ECO:0000250|UniProtKB:P84084}; Lipid-anchor {ECO:0000250|UniProtKB:P84084}

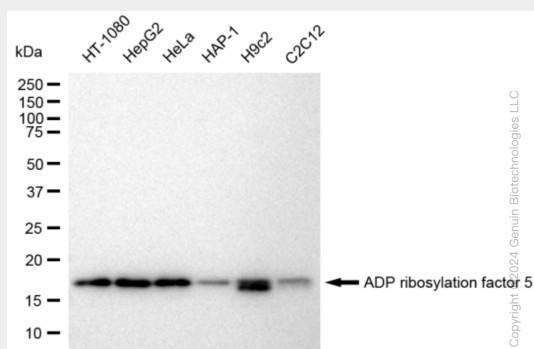
**KD-Validated Anti-ADP ribosylation factor 5 Rabbit Monoclonal Antibody - Protocols**

Provided below are standard protocols that you may find useful for product applications.

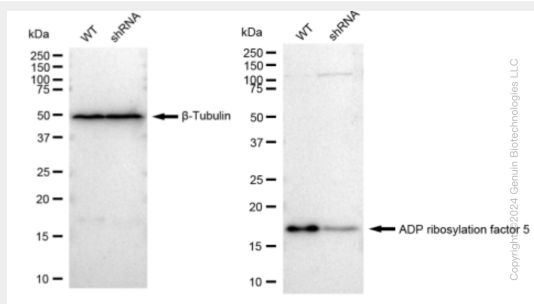
- [Western Blot](#)
- [Blocking Peptides](#)

- [Dot Blot](#)
- [Immunohistochemistry](#)
- [Immunofluorescence](#)
- [Immunoprecipitation](#)
- [Flow Cytometry](#)
- [Cell Culture](#)

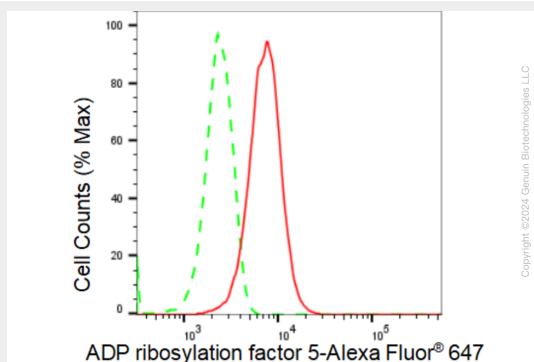
## KD-Validated Anti-ADP ribosylation factor 5 Rabbit Monoclonal Antibody - Images



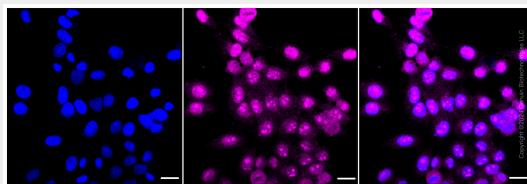
Western blotting analysis using anti-ADP ribosylation factor 5 antibody (Cat#AGI1233). Total cell lysates (30 µg) from various cell lines were loaded and separated by SDS-PAGE. The blot was incubated with anti-ADP ribosylation factor 5 antibody (Cat#AGI1233, 1:5,000) and HRP-conjugated goat anti-rabbit secondary antibody respectively.



Western blotting analysis using anti-ADP ribosylation factor 5 antibody (Cat#AGI1233). ADP ribosylation factor 5 expression in wild type (WT) and ADP ribosylation factor 5 shRNA knockdown (KD) HeLa cells with 30 µg of total cell lysates. β-Tubulin serves as a loading control. The blot was incubated with anti-ADP ribosylation factor 5 antibody (Cat#AGI1233, 1:5,000) and HRP-conjugated goat anti-rabbit secondary antibody respectively.



Flow cytometric analysis of ADP ribosylation factor 5 expression in HepG2 cells using ADP ribosylation factor 5 antibody (Cat#AGI1233, 1:2,000). Green, isotype control; red, ADP ribosylation factor 5.



Immunocytochemical staining of HepG2 cells with ADP ribosylation factor 5 antibody (Cat#AGI1233, 1:1,000). Nuclei were stained blue with DAPI; ADP ribosylation factor 5 was stained magenta with Alexa Fluor® 647. Images were taken using Leica stellaris 5. Protein abundance based on laser Intensity and smart gain: Medium. Scale bar: 20  $\mu$ m.