

KD-Validated Anti-Glutathione-disulfide reductase Rabbit Monoclonal Antibody
Rabbit monoclonal antibody
Catalog # AGI1238**Specification****KD-Validated Anti-Glutathione-disulfide reductase Rabbit Monoclonal Antibody - Product Information**

Application	WB, FC, ICC
Primary Accession	P00390
Reactivity	Human, Mouse
Clonality	Monoclonal
Isotype	Rabbit IgG
Calculated MW	Predicted, 56 kDa , observed, 50 kDa KDa
Gene Name	GSR
Aliases	GSR; Glutathione-Disulfide Reductase; Glutathione Reductase, Mitochondrial; Glutathione S-Reductase; EC 1.8.1.7; GRase; GR; Epididymis Secretory Sperm Binding Protein Li 122m; Epididymis Luminal Protein 75; Glutathione Reductase; HEL-S-122m; EC 1.8.1; HEL-75; GSRD; GLUR; GRD1
Immunogen	A synthesized peptide derived from human GLUR

KD-Validated Anti-Glutathione-disulfide reductase Rabbit Monoclonal Antibody - Additional Information

Gene ID	2936
Other Names	
Glutathione reductase, mitochondrial, GR, GRase, 1.8.1.7, GSR, GLUR, GRD1	

KD-Validated Anti-Glutathione-disulfide reductase Rabbit Monoclonal Antibody - Protein Information**Name** GSR**Synonyms** GLUR, GRD1**Function**

Catalyzes the reduction of glutathione disulfide (GSSG) to reduced glutathione (GSH). Constitutes the major mechanism to maintain a high GSH:GSSG ratio in the cytosol.

Cellular Location

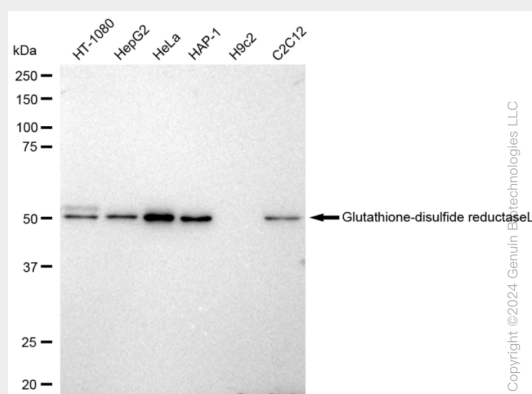
[Isoform Mitochondrial]: Mitochondrion.

KD-Validated Anti-Glutathione-disulfide reductase Rabbit Monoclonal Antibody - Protocols

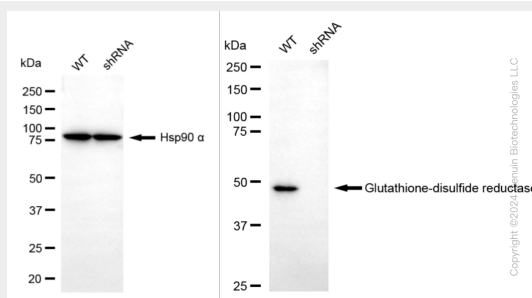
Provided below are standard protocols that you may find useful for product applications.

- [Western Blot](#)
- [Blocking Peptides](#)
- [Dot Blot](#)
- [Immunohistochemistry](#)
- [Immunofluorescence](#)
- [Immunoprecipitation](#)
- [Flow Cytometry](#)
- [Cell Culture](#)

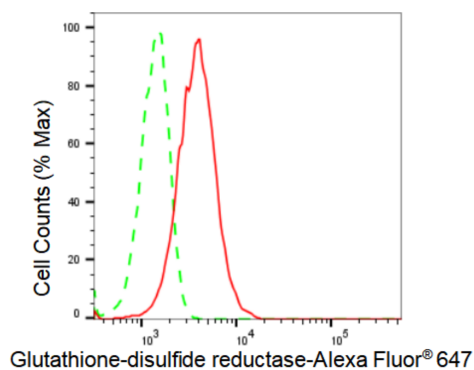
KD-Validated Anti-Glutathione-disulfide reductase Rabbit Monoclonal Antibody - Images



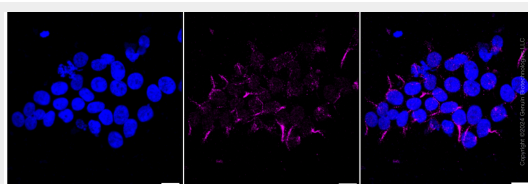
Western blotting analysis using anti-Glutathione-disulfide reductase antibody (Cat#AGI1238). Total cell lysates (30 µg) from various cell lines were loaded and separated by SDS-PAGE. The blot was incubated with anti-Glutathione-disulfide reductase antibody (Cat#AGI1238, 1:5,000) and HRP-conjugated goat anti-rabbit secondary antibody respectively.



Western blotting analysis using anti-Glutathione-disulfide reductase antibody (Cat#AGI1238). Glutathione-disulfide reductase expression in wild type (WT) and glutathione-disulfide reductase shRNA knockdown (KD) HeLa cells with 30 µg of total cell lysates. Hsp90 α serves as a loading control. The blot was incubated with anti-Glutathione-disulfide reductase antibody (Cat#AGI1238, 1:5,000) and HRP-conjugated goat anti-rabbit secondary antibody respectively.



Flow cytometric analysis of Glutathione-disulfide reductase expression in HeLa cells using Glutathione-disulfide reductase antibody (Cat#AGI1238, 1:2,000). Green, isotype control; red, Glutathione-disulfide reductase.



Immunocytochemical staining of HeLa cells with Glutathione-disulfide reductase antibody (Cat#AGI1238, 1:1,000). Nuclei were stained blue with DAPI; Glutathione-disulfide reductase was stained magenta with Alexa Fluor® 647. Images were taken using Leica stellaris 5. Protein abundance based on laser Intensity and smart gain: Very low. Scale bar: 20 µm.