

KD-Validated Anti-Helicase like transcription factor Rabbit Monoclonal Antibody
Rabbit monoclonal antibody
Catalog # AGI1239**Specification**

KD-Validated Anti-Helicase like transcription factor Rabbit Monoclonal Antibody - Product Information

Application	WB, ICC
Primary Accession	Q14527
Reactivity	Human
Clonality	Monoclonal
Isotype	Rabbit IgG
Calculated MW	Predicted, 114 kDa , observed, 120 kDa
Gene Name	KDa
Aliases	HLTF HLTF; Helicase Like Transcription Factor; HIP116A; RNF80; SMARCA3; SNF2L3; HLTF1; SWI/SNF Related, Matrix Associated, Actin Dependent Regulator Of Chromatin, Subfamily A, Member 3; SWI/SNF-Related Matrix-Associated Actin-Dependent Regulator Of Chromatin Subfamily A Member 3; RING-Type E3 Ubiquitin Transferase HLTF; Sucrose Nonfermenting Protein 2-Like 3; Helicase-Like Transcription Factor; RING Finger Protein 80; HIP116; ZBU1; DNA-Binding Protein/Plasminogen Activator Inhibitor-1 Regulator; DNA-Binding Protein/Plasminogen Activator Inhibitor 1 Regulator; Sucrose Nonfermenting-Like 3; SNF2-Like 3; EC 2.3.2.27; EC 3.6.4.-; EC 3.6.1
Immunogen	A synthesized peptide derived from human HLTF

KD-Validated Anti-Helicase like transcription factor Rabbit Monoclonal Antibody - Additional InformationGene ID **6596****Other Names**

Helicase-like transcription factor, 2.3.2.27, 3.6.4.-, DNA-binding protein/plasminogen activator inhibitor 1 regulator, HIP116, RING finger protein 80, RING-type E3 ubiquitin transferase HLTF, SWI/SNF-related matrix-associated actin-dependent regulator of chromatin subfamily A member 3, Sucrose nonfermenting protein 2-like 3, HLTF, HIP116A, RNF80, SMARCA3, SNF2L3, ZBU1

KD-Validated Anti-Helicase like transcription factor Rabbit Monoclonal Antibody - Protein Information

Name HLTF

Synonyms HIP116A, RNF80, SMARCA3, SNF2L3, ZBU1

Function

Has both helicase and E3 ubiquitin ligase activities. Possesses intrinsic ATP-dependent nucleosome-remodeling activity; This activity may be required for transcriptional activation or repression of specific target promoters (By similarity). These may include the SERPINE1 and HIV-1 promoters and the SV40 enhancer, to which this protein can bind directly. Plays a role in error-free postreplication repair (PRR) of damaged DNA and maintains genomic stability through acting as a ubiquitin ligase for 'Lys-63'-linked polyubiquitination of chromatin-bound PCNA.

Cellular Location

Cytoplasm. Nucleus. Nucleus, nucleolus Nucleus, nucleoplasm. Note=Nuclear localization is stimulated by progesterone.

Tissue Location

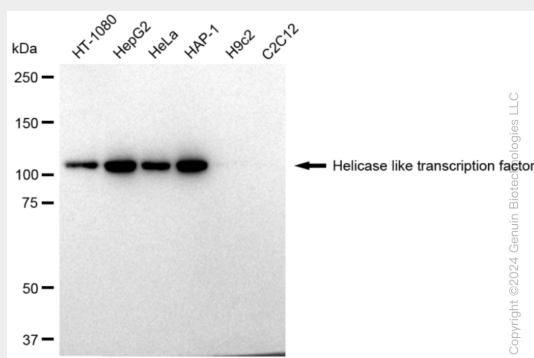
Expressed in brain, heart, kidney, liver, lung, pancreas, placenta and skeletal muscle.

KD-Validated Anti-Helicase like transcription factor Rabbit Monoclonal Antibody - Protocols

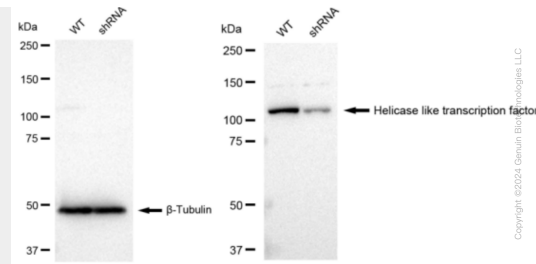
Provided below are standard protocols that you may find useful for product applications.

- [Western Blot](#)
- [Blocking Peptides](#)
- [Dot Blot](#)
- [Immunohistochemistry](#)
- [Immunofluorescence](#)
- [Immunoprecipitation](#)
- [Flow Cytometry](#)
- [Cell Culture](#)

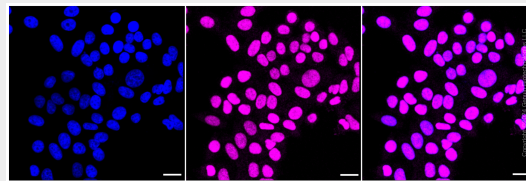
KD-Validated Anti-Helicase like transcription factor Rabbit Monoclonal Antibody - Images



Western blotting analysis using anti-Helicase like transcription factor antibody (Cat#AGI1239). Total cell lysates (30 µg) from various cell lines were loaded and separated by SDS-PAGE. The blot was incubated with anti-Helicase like transcription factor antibody (Cat#AGI1239, 1:5,000) and HRP-conjugated goat anti-rabbit secondary antibody respectively.



Western blotting analysis using anti-Helicase like transcription factor antibody (Cat#AGI1239). Helicase like transcription factor expression in wild type (WT) and helicase like transcription factor shRNA knockdown (KD) HeLa cells with 30 μ g of total cell lysates. β -Tubulin serves as a loading control. The blot was incubated with anti-Helicase like transcription factor antibody (Cat#AGI1239, 1:5,000) and HRP-conjugated goat anti-rabbit secondary antibody respectively.



Immunocytochemical staining of HepG2 cells with Helicase like transcription factor antibody (Cat#AGI1239, 1:1,000). Nuclei were stained blue with DAPI; Helicase like transcription factor was stained magenta with Alexa Fluor® 647. Images were taken using Leica stellaris 5. Protein abundance based on laser Intensity and smart gain: High. Scale bar: 20 μ m.