

KD-Validated Anti-Paired box 6 Rabbit Monoclonal Antibody
Rabbit monoclonal antibody
Catalog # AGI1263**Specification****KD-Validated Anti-Paired box 6 Rabbit Monoclonal Antibody - Product Information**

Application	WB, FC, ICC
Primary Accession	P26367
Reactivity	Human
Clonality	Monoclonal
Isotype	Rabbit IgG
Calculated MW	Predicted, 47 kDa , observed, 47 kDa KDa
Gene Name	PAX6
Aliases	Paired Box 6; D11S812E; WAGR; AN2; AN; Paired Box Protein Pax-6; Aniridia Type II Protein; Oculorhombin; Aniridia 1; Aniridia 2; AN1; Paired Box Gene 6 (Aniridia, Keratitis); Paired Box 6 PAX6A-ASdel6-AS7 Isoform; Paired Box 6 PAX6A-ASdel6 Isoform; Paired Box 6 PAX6B-ASdel6 Isoform; Paired Box 6 PAX6A-Del6 Isoform; Paired Box 6 PAX6-12a Isoform; Paired Box 6 PAX6D Isoform; Paired Box Homeotic Gene-6; Alternative Protein PAX6; Aniridia, Keratitis; ASGD5; FVH1; MGDA;
Immunogen	A synthesized peptide derived from human PAX6

KD-Validated Anti-Paired box 6 Rabbit Monoclonal Antibody - Additional Information

Gene ID	5080
Other Names	
Paired box protein Pax-6, Aniridia type II protein, Oculorhombin, PAX6, AN2	

KD-Validated Anti-Paired box 6 Rabbit Monoclonal Antibody - Protein Information**Name** PAX6**Synonyms** AN2**Function**

Transcription factor with important functions in the development of the eye, nose, central nervous system and pancreas. Required for the differentiation of pancreatic islet alpha cells (By similarity). Competes with PAX4 in binding to a common element in the glucagon, insulin and somatostatin promoters. Regulates specification of the ventral neuron subtypes by establishing the correct progenitor domains (By similarity). Acts as a transcriptional repressor of NFATC1- mediated gene expression (By similarity).

Cellular Location

Nucleus {ECO:0000250|UniProtKB:P63015}. [Isoform 5a]: Nucleus
{ECO:0000250|UniProtKB:P63016}

Tissue Location

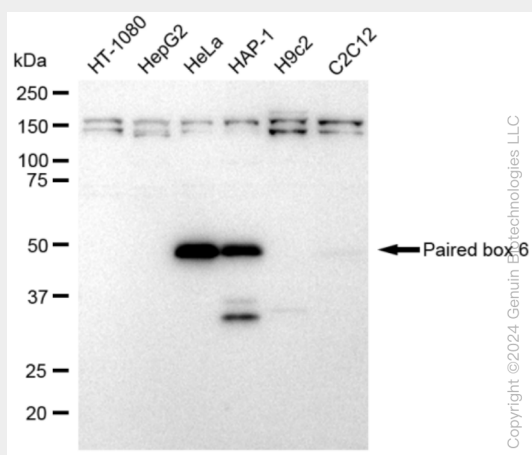
[Isoform 1]: Expressed in lymphoblasts.

KD-Validated Anti-Paired box 6 Rabbit Monoclonal Antibody - Protocols

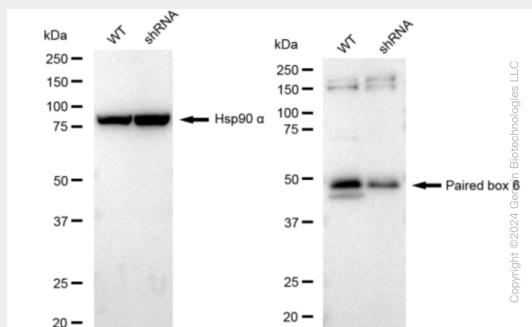
Provided below are standard protocols that you may find useful for product applications.

- [Western Blot](#)
- [Blocking Peptides](#)
- [Dot Blot](#)
- [Immunohistochemistry](#)
- [Immunofluorescence](#)
- [Immunoprecipitation](#)
- [Flow Cytometry](#)
- [Cell Culture](#)

KD-Validated Anti-Paired box 6 Rabbit Monoclonal Antibody - Images

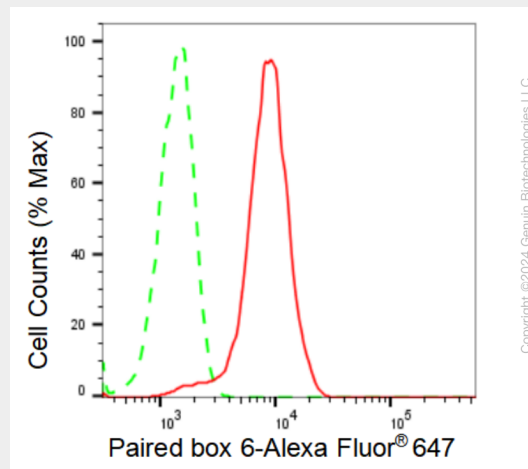


Western blotting analysis using anti-Paired box 6 antibody (Cat#AGI1263). Total cell lysates (30 µg) from various cell lines were loaded and separated by SDS-PAGE. The blot was incubated with anti-Paired box 6 antibody (Cat#AGI1263, 1:5,000) and HRP-conjugated goat anti-rabbit secondary antibody respectively.

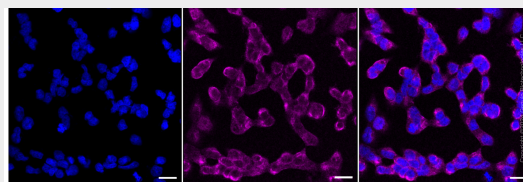


Western blotting analysis using anti-Paired box 6 antibody (Cat#AGI1263). Paired box 6 expression in wild type (WT) and paired box 6 shRNA knockdown (KD) HeLa cells with 30 µg of total cell lysates was analyzed.

total cell lysates. Hsp90 α serves as a loading control. The blot was incubated with anti-Paired box 6 antibody (Cat#AGI1263, 1:5,000) and HRP-conjugated goat anti-rabbit secondary antibody respectively.



Flow cytometric analysis of Paired box 6 expression in HeLa cells using Paired box 6 antibody (Cat#AGI1263, 1:2,000). Green, isotype control; red, Paired box 6.



Immunocytochemical staining of HeLa cells with Paired box 6 antibody (Cat#AGI1263, 1:1,000). Nuclei were stained blue with DAPI; Paired box 6 was stained magenta with Alexa Fluor® 647. Images were taken using Leica stellaris 5. Protein abundance based on laser Intensity and smart gain: Medium. Scale bar: 20 μ m.