

KD-Validated Anti-PFKM Rabbit Monoclonal Antibody
Rabbit monoclonal antibody
Catalog # AGI1265**Specification****KD-Validated Anti-PFKM Rabbit Monoclonal Antibody - Product Information**

Application	WB, FC, ICC
Primary Accession	P08237
Reactivity	Rat, Human, Mouse
Clonality	Monoclonal
Isotype	Rabbit IgG
Calculated MW	Predicted, 85 kDa, observed, 75 kDa kDa
Gene Name	PFKM
Aliases	PFKM; Phosphofructokinase, Muscle; PPP1R122; PFK-1; PFKX; ATP-Dependent 6-Phosphofructokinase, Muscle Type; Protein Phosphatase 1, Regulatory Subunit 122; Phosphofructokinase, Polypeptide X; Phosphofructo-1-Kinase Isozyme A; 6-Phosphofructokinase Type A; Phosphohexokinase; EC 2.7.1.11; ATP-PFK; PFK-A; 6-Phosphofructokinase, Muscle Type; 6-Phosphofructo-1-Kinase; Phosphofructokinase 1; Phosphofructokinase-M; EC 2.7.1; PFK-M; GSD7; PFK1; PFKA
Immunogen	A synthesized peptide derived from human Fructose 6 Phosphate Kinase

KD-Validated Anti-PFKM Rabbit Monoclonal Antibody - Additional Information

Gene ID	5213
Other Names	ATP-dependent 6-phosphofructokinase, muscle type {ECO:0000255 HAMAP-Rule:MF_03184}, ATP-PFK {ECO:0000255 HAMAP-Rule:MF_03184}, PFK-M, 2.7.1.11 {ECO:0000255 HAMAP-Rule:MF_03184}, 6-phosphofructokinase type A, Phosphofructo-1-kinase isozyme A, PFK-A, Phosphohexokinase {ECO:0000255 HAMAP-Rule:MF_03184}, PFKM, PFKX

KD-Validated Anti-PFKM Rabbit Monoclonal Antibody - Protein Information**Name** PFKM**Synonyms** PFKX**Function**

Catalyzes the phosphorylation of D-fructose 6-phosphate to fructose 1,6-bisphosphate by ATP, the first committing step of glycolysis.

Cellular Location

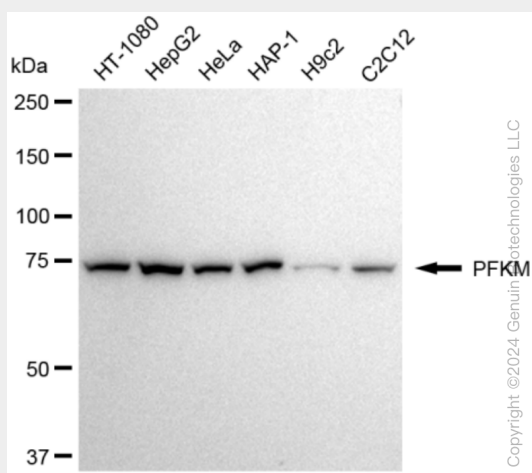
Cytoplasm {ECO:0000255|HAMAP-Rule:MF_03184}.

KD-Validated Anti-PFKM Rabbit Monoclonal Antibody - Protocols

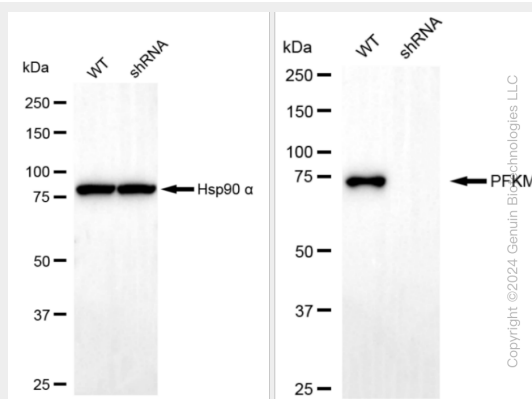
Provided below are standard protocols that you may find useful for product applications.

- [Western Blot](#)
- [Blocking Peptides](#)
- [Dot Blot](#)
- [Immunohistochemistry](#)
- [Immunofluorescence](#)
- [Immunoprecipitation](#)
- [Flow Cytometry](#)
- [Cell Culture](#)

KD-Validated Anti-PFKM Rabbit Monoclonal Antibody - Images

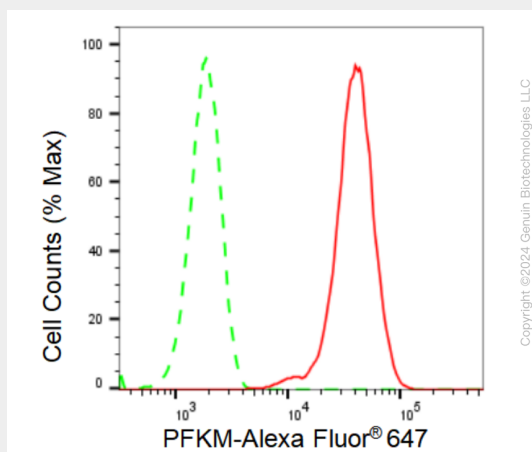


Western blotting analysis using anti-PFKM antibody (Cat#AGI1265). Total cell lysates (30 µg) from various cell lines were loaded and separated by SDS-PAGE. The blot was incubated with anti-PFKM antibody (Cat#AGI1265, 1:5,000) and HRP-conjugated goat anti-rabbit secondary antibody respectively.

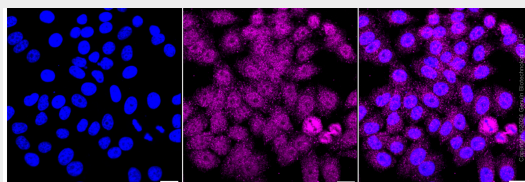


Western blotting analysis using anti-PFKM antibody (Cat#AGI1265). PFKM expression in wild type (WT) and PFKM shRNA knockdown (KD) HeLa cells with 30 µg of total cell lysates. β-Tubulin serves as a loading control. The blot was incubated with anti-PFKM antibody (Cat#AGI1265, 1:5,000) and

HRP-conjugated goat anti-rabbit secondary antibody respectively.



Flow cytometric analysis of PFKM expression in HepG2 cells using PFKM antibody (Cat#AGI1265, 1:2,000). Green, isotype control; red, PFKM.



Immunocytochemical staining of HepG2 cells with PFKM antibody (Cat#AGI1265, 1:1,000). Nuclei were stained blue with DAPI; PFKM was stained magenta with Alexa Fluor® 647. Images were taken using Leica stellaris 5. Protein abundance based on laser Intensity and smart gain: Medium. Scale bar: 20 μ m.