

**KD-Validated Anti-PVR Rabbit Monoclonal Antibody**  
**Rabbit monoclonal antibody**  
**Catalog # AGI1276****Specification**

---

**KD-Validated Anti-PVR Rabbit Monoclonal Antibody - Product Information**

Application	WB, ICC
Primary Accession	<a href="#">P15151</a>
Reactivity	Human
Clonality	Monoclonal
Isotype	Rabbit IgG
Calculated MW	Predicted, 45 kDa , observed, 70 kDa KDa
Gene Name	PVR
Aliases	PVR; PVR Cell Adhesion Molecule; Poliovirus Receptor; CD155; NECL5; HVED; PVS; Nectin-Like Protein 5; Necl-5; NECL-5; TAGE4; Nectin-Like 5; CD155 Antigen; Tage4
Immunogen	A synthesized peptide derived from human Poliovirus Receptor

**KD-Validated Anti-PVR Rabbit Monoclonal Antibody - Additional Information**

Gene ID	5817
<b>Other Names</b>	
Poliovirus receptor, Nectin-like protein 5, NECL-5, CD155, PVR, PVS	

**KD-Validated Anti-PVR Rabbit Monoclonal Antibody - Protein Information****Name** PVR**Synonyms** PVS**Function**

Mediates NK cell adhesion and triggers NK cell effector functions. Binds two different NK cell receptors: CD96 and CD226. These interactions accumulates at the cell-cell contact site, leading to the formation of a mature immunological synapse between NK cell and target cell. This may trigger adhesion and secretion of lytic granules and IFN-gamma and activate cytotoxicity of activated NK cells. May also promote NK cell-target cell modular exchange, and PVR transfer to the NK cell. This transfer is more important in some tumor cells expressing a lot of PVR, and may trigger fratricide NK cell activation, providing tumors with a mechanism of immunoevasion. Plays a role in mediating tumor cell invasion and migration.

**Cellular Location**

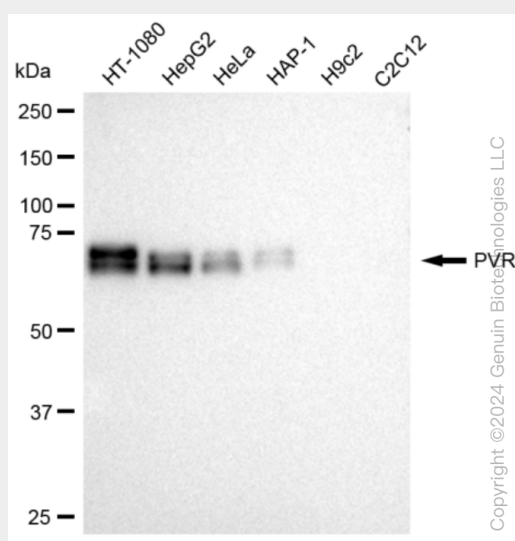
[Isoform Alpha]: Cell membrane; Single-pass type I membrane protein [Isoform Beta]: Secreted.

## KD-Validated Anti-PVR Rabbit Monoclonal Antibody - Protocols

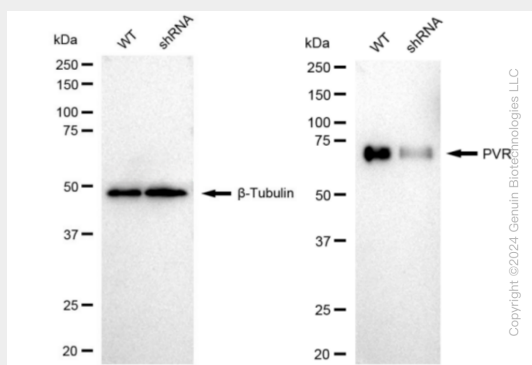
Provided below are standard protocols that you may find useful for product applications.

- [Western Blot](#)
- [Blocking Peptides](#)
- [Dot Blot](#)
- [Immunohistochemistry](#)
- [Immunofluorescence](#)
- [Immunoprecipitation](#)
- [Flow Cytometry](#)
- [Cell Culture](#)

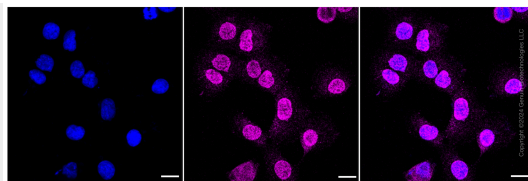
## KD-Validated Anti-PVR Rabbit Monoclonal Antibody - Images



Western blotting analysis using anti-PVR antibody (Cat#AGI1276). Total cell lysates (30 µg) from various cell lines were loaded and separated by SDS-PAGE. The blot was incubated with anti-PVR antibody (Cat#AGI1276, 1:5,000) and HRP-conjugated goat anti-rabbit secondary antibody respectively.



Western blotting analysis using anti-PVR antibody (Cat#AGI1276). PVR expression in wild type (WT) and PVR shRNA knockdown (KD) HeLa cells with 30 µg of total cell lysates. β-Tubulin serves as a loading control. The blot was incubated with anti-PVR antibody (Cat#AGI1276, 1:5,000) and HRP-conjugated goat anti-rabbit secondary antibody respectively.



Immunocytochemical staining of HT-1080 cells with PVR antibody (Cat#AGI1276, 1:1,000). Nuclei were stained blue with DAPI; PVR was stained magenta with Alexa Fluor® 647. Images were taken using Leica stellaris 5. Protein abundance based on laser Intensity and smart gain: Low. Scale bar: 20  $\mu$ m.