

KD-Validated Anti-PWP1 Rabbit Monoclonal Antibody
Rabbit monoclonal antibody
Catalog # AGI1277**Specification****KD-Validated Anti-PWP1 Rabbit Monoclonal Antibody - Product Information**

Application	WB, FC, ICC
Primary Accession	Q13610
Reactivity	Human, Mouse
Clonality	Monoclonal
Isotype	Rabbit IgG
Calculated MW	Predicted, 56 kDa, observed, 74 kDa kDa
Gene Name	PWP1
Aliases	PWP1; PWP1 Homolog, Endonuclein; IEF-SSP-9502; Periodic Tryptophan Protein 1 Homolog; Keratinocyte Protein IEF SSP 9502; Endonuclein; Nuclear Phosphoprotein Similar To S. Cerevisiae PWP1; PWP1 Homolog (S. Cerevisiae); NCLB
Immunogen	A synthesized peptide derived from human PWP1

KD-Validated Anti-PWP1 Rabbit Monoclonal Antibody - Additional Information

Gene ID	11137
Other Names	
Periodic tryptophan protein 1 homolog {ECO:0000312 HGNC:HGNC:17015}, Keratinocyte protein IEF SSP 9502, PWP1	

KD-Validated Anti-PWP1 Rabbit Monoclonal Antibody - Protein Information**Name** PWP1**Function**

Chromatin-associated factor that regulates transcription (PubMed:29065309). Regulates Pol I-mediated rRNA biogenesis and, probably, Pol III-mediated transcription (PubMed:29065309). Regulates the epigenetic status of rDNA (PubMed:29065309).

Cellular Location

Nucleus. Nucleus, nucleolus. Chromosome. Note=Associates with chromatin regions of rDNA.

Tissue Location

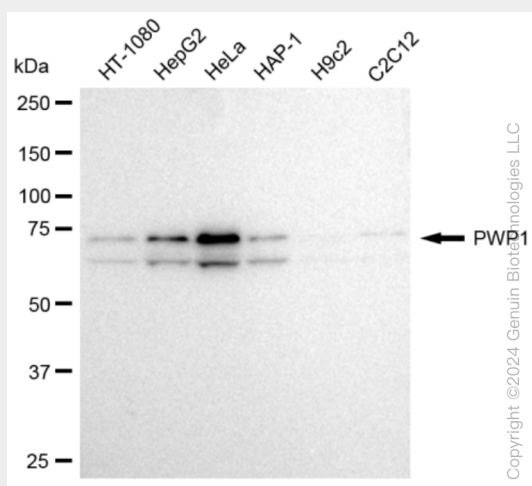
High levels seen in the placenta, skeletal muscle, kidney and pancreas while lower levels were seen in the heart, brain and lung

KD-Validated Anti-PWP1 Rabbit Monoclonal Antibody - Protocols

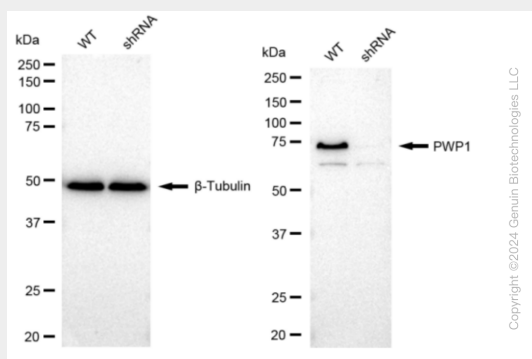
Provided below are standard protocols that you may find useful for product applications.

- [Western Blot](#)
- [Blocking Peptides](#)
- [Dot Blot](#)
- [Immunohistochemistry](#)
- [Immunofluorescence](#)
- [Immunoprecipitation](#)
- [Flow Cytometry](#)
- [Cell Culture](#)

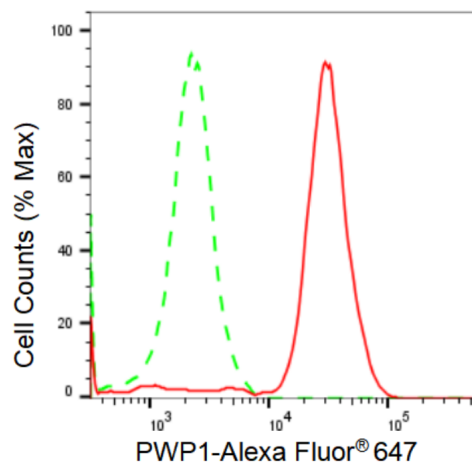
KD-Validated Anti-PWP1 Rabbit Monoclonal Antibody - Images



Western blotting analysis using anti-PWP1 antibody (Cat#AGI1277). Total cell lysates (30 µg) from various cell lines were loaded and separated by SDS-PAGE. The blot was incubated with anti-PWP1 antibody (Cat#AGI1277, 1:5,000) and HRP-conjugated goat anti-rabbit secondary antibody respectively.

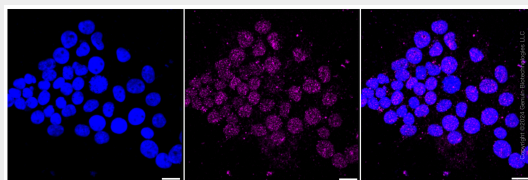


Western blotting analysis using anti-PWP1 antibody (Cat#AGI1277). PWP1 expression in wild type (WT) and PWP1 shRNA knockdown (KD) HeLa cells with 30 µg of total cell lysates. β-Tubulin serves as a loading control. The blot was incubated with anti-PWP1 antibody (Cat#AGI1277, 1:5,000) and HRP-conjugated goat anti-rabbit secondary antibody respectively.



Copyright ©2024 Genuin Biotechnologies LLC

Flow cytometric analysis of PWP1 expression in HeLa cells using PWP1 antibody (Cat#AGI1277, 1:2,000). Green, isotype control; red, PWP1.



Immunocytochemical staining of HeLa cells with PWP1 antibody (Cat#AGI1277, 1:1,000). Nuclei were stained blue with DAPI; PWP1 was stained magenta with Alexa Fluor® 647. Images were taken using Leica stellaris 5. Protein abundance based on laser Intensity and smart gain: Medium. Scale bar: 20 μ m.