

**KD-Validated Anti-SEC24D Rabbit Monoclonal Antibody**  
**Rabbit monoclonal antibody**  
**Catalog # AGI1283****Specification****KD-Validated Anti-SEC24D Rabbit Monoclonal Antibody - Product Information**

Application	WB, FC, ICC
Primary Accession	<a href="#">O94855</a>
Reactivity	Rat, Human, Mouse
Clonality	Monoclonal
Isotype	Rabbit IgG
Calculated MW	Predicted, 113 kDa , observed, 113 kDa
Gene Name	KDa
Aliases	SEC24D SEC24D; SEC24 Homolog D, COPII Coat Complex Component; KIAA0755; Protein Transport Protein Sec24D; SEC24-Related Protein D; SEC24 (S. Cerevisiae) Related Gene Family, Member D; SEC24 Family, Member D (S. Cerevisiae); SEC24 Related Gene Family, Member D; SEC24 Family Member D; CLCRP2
Immunogen	A synthesized peptide derived from human SEC24D

**KD-Validated Anti-SEC24D Rabbit Monoclonal Antibody - Additional Information**

Gene ID	9871
Other Names	
Protein transport protein Sec24D, SEC24-related protein D, SEC24D (<a href="http://www.genenames.org/cgi-bin/gene_symbol_report?hgnc_id=10706" target="_blank">HGNC:10706</a>)	

**KD-Validated Anti-SEC24D Rabbit Monoclonal Antibody - Protein Information****Name** SEC24D ([HGNC:10706](#))**Function**

Component of the coat protein complex II (COPII) which promotes the formation of transport vesicles from the endoplasmic reticulum (ER). The coat has two main functions, the physical deformation of the endoplasmic reticulum membrane into vesicles and the selection of cargo molecules for their transport to the Golgi complex (PubMed:<a href="http://www.uniprot.org/citations/17499046" target="\_blank">17499046</a>, PubMed:<a href="http://www.uniprot.org/citations/18843296" target="\_blank">18843296</a>, PubMed:<a href="http://www.uniprot.org/citations/20427317" target="\_blank">20427317</a>). Plays a central role in cargo selection within the COPII complex and together with SEC24C may have a different specificity compared to SEC24A and SEC24B (PubMed:<a href="http://www.uniprot.org/citations/17499046" target="\_blank">17499046</a>, PubMed:<a href="http://www.uniprot.org/citations/17499046" target="\_blank">17499046</a>).

href="http://www.uniprot.org/citations/18843296" target="\_blank">18843296</a>, PubMed:<a href="http://www.uniprot.org/citations/20427317" target="\_blank">20427317</a>). May more specifically package GPI-anchored proteins through the cargo receptor TMED10 (PubMed:<a href="http://www.uniprot.org/citations/20427317" target="\_blank">20427317</a>). May also be specific for IxM motif-containing cargos like the SNAREs GOSR2 and STX5 (PubMed:<a href="http://www.uniprot.org/citations/18843296" target="\_blank">18843296</a>).

### Cellular Location

Cytoplasmic vesicle, COPII-coated vesicle membrane; Peripheral membrane protein {ECO:0000250|UniProtKB:P53992}; Cytoplasmic side {ECO:0000250|UniProtKB:P53992}. Endoplasmic reticulum membrane; Peripheral membrane protein {ECO:0000250|UniProtKB:P53992}; Cytoplasmic side {ECO:0000250|UniProtKB:P53992}. Cytoplasm, cytosol {ECO:0000250|UniProtKB:P53992}

### Tissue Location

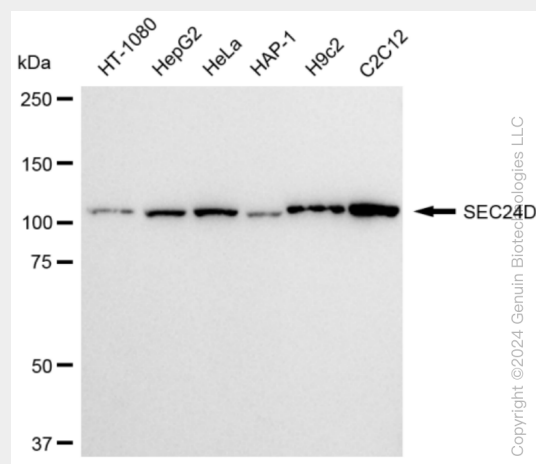
Ubiquitously expressed, with higher amounts in placenta, pancreas, heart and liver.

## KD-Validated Anti-SEC24D Rabbit Monoclonal Antibody - Protocols

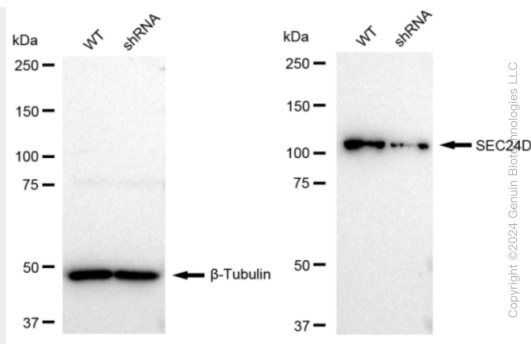
Provided below are standard protocols that you may find useful for product applications.

- [Western Blot](#)
- [Blocking Peptides](#)
- [Dot Blot](#)
- [Immunohistochemistry](#)
- [Immunofluorescence](#)
- [Immunoprecipitation](#)
- [Flow Cytometry](#)
- [Cell Culture](#)

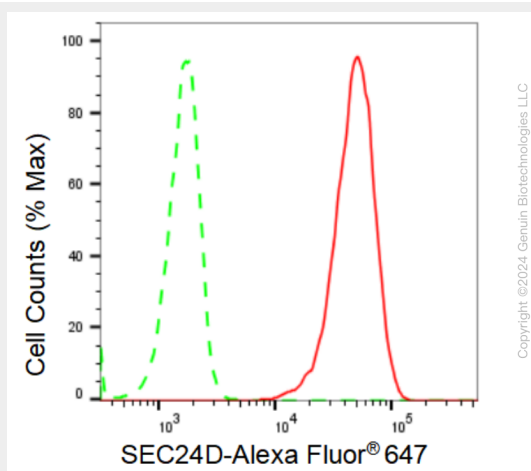
## KD-Validated Anti-SEC24D Rabbit Monoclonal Antibody - Images



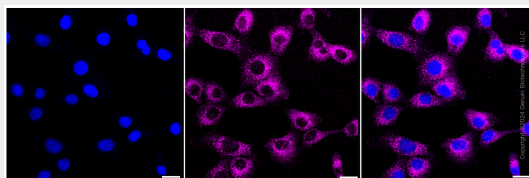
Western blotting analysis using anti-SEC24D antibody (Cat#AGI1283). Total cell lysates (30 µg) from various cell lines were loaded and separated by SDS-PAGE. The blot was incubated with anti-SEC24D antibody (Cat#AGI1283, 1:5,000) and HRP-conjugated goat anti-rabbit secondary antibody respectively.



Western blotting analysis using anti-SEC24D antibody (Cat#AGI1283). SEC24D expression in wild type (WT) and SEC24D shRNA knockdown (KD) HeLa cells with 30 µg of total cell lysates. β-Tubulin serves as a loading control. The blot was incubated with anti-SEC24D antibody (Cat#AGI1283, 1:5,000) and HRP-conjugated goat anti-rabbit secondary antibody respectively.



Flow cytometric analysis of SEC24D expression in C2C12 cells using SEC24D antibody (Cat#AGI1283, 1:2,000). Green, isotype control; red, SEC24D.



Immunocytochemical staining of C2C12 cells with SEC24D antibody (Cat#AGI1283, 1:1,000). Nuclei were stained blue with DAPI; SEC24D was stained magenta with Alexa Fluor® 647. Images were taken using Leica stellaris 5. Protein abundance based on laser Intensity and smart gain: Medium. Scale bar: 20 µm.