

KD-Validated Anti-Wnt family member 5A Rabbit Monoclonal Antibody
Rabbit monoclonal antibody
Catalog # AGI1290**Specification****KD-Validated Anti-Wnt family member 5A Rabbit Monoclonal Antibody - Product Information**

Application	WB, FC, ICC
Primary Accession	P41221
Reactivity	Human
Clonality	Monoclonal
Isotype	Rabbit IgG
Calculated MW	Predicted, 42 kDa , observed, 42 kDa KDa
Gene Name	WNT5A
Aliases	WNT5A; Wnt Family Member 5A; HWNT5A; Wingless-Type MMTV Integration Site Family, Member 5A; WNT-5A Protein; Protein Wnt-5a; Epididymis Secretory Sperm Binding Protein
Immunogen	A synthesized peptide derived from human Wnt5a

KD-Validated Anti-Wnt family member 5A Rabbit Monoclonal Antibody - Additional Information

Gene ID	7474
Other Names	
Protein Wnt-5a, WNT5A	

KD-Validated Anti-Wnt family member 5A Rabbit Monoclonal Antibody - Protein Information**Name** WNT5A**Function**

Ligand for members of the frizzled family of seven transmembrane receptors. Can activate or inhibit canonical Wnt signaling, depending on receptor context. In the presence of FZD4, activates beta-catenin signaling. In the presence of ROR2, inhibits the canonical Wnt pathway by promoting beta-catenin degradation through a GSK3-independent pathway which involves down-regulation of beta- catenin-induced reporter gene expression (By similarity). Suppression of the canonical pathway allows chondrogenesis to occur and inhibits tumor formation. Stimulates cell migration. Decreases proliferation, migration, invasiveness and clonogenicity of carcinoma cells and may act as a tumor suppressor (PubMed:15735754). Mediates motility of melanoma cells (PubMed:17426020). Required during embryogenesis for extension of the primary anterior-posterior axis and for outgrowth of limbs and the genital tubercle. Inhibits type II collagen expression in chondrocytes (By similarity).

Cellular Location

Secreted, extracellular space, extracellular matrix. Secreted

Tissue Location

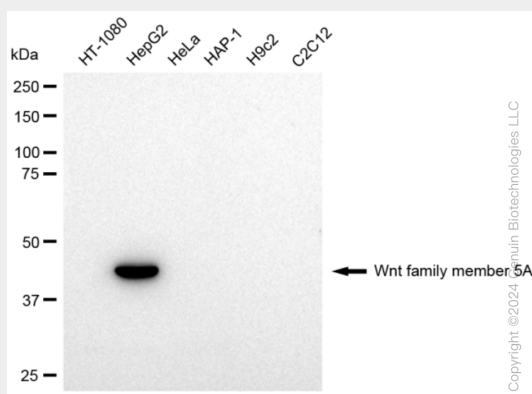
Expression is increased in differentiated thyroid carcinomas compared to normal thyroid tissue and anaplastic thyroid tumors where expression is low or undetectable. Expression is found in thyrocytes but not in stromal cells (at protein level) (PubMed:15735754). Detected in neonate heart and lung (PubMed:8288227)

KD-Validated Anti-Wnt family member 5A Rabbit Monoclonal Antibody - Protocols

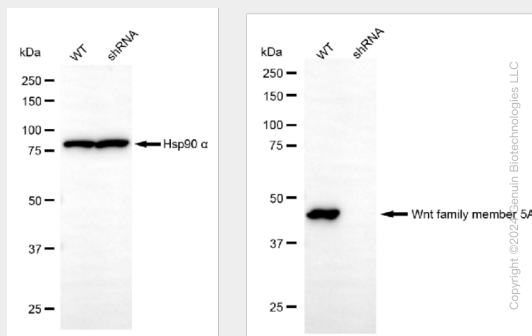
Provided below are standard protocols that you may find useful for product applications.

- [Western Blot](#)
- [Blocking Peptides](#)
- [Dot Blot](#)
- [Immunohistochemistry](#)
- [Immunofluorescence](#)
- [Immunoprecipitation](#)
- [Flow Cytometry](#)
- [Cell Culture](#)

KD-Validated Anti-Wnt family member 5A Rabbit Monoclonal Antibody - Images

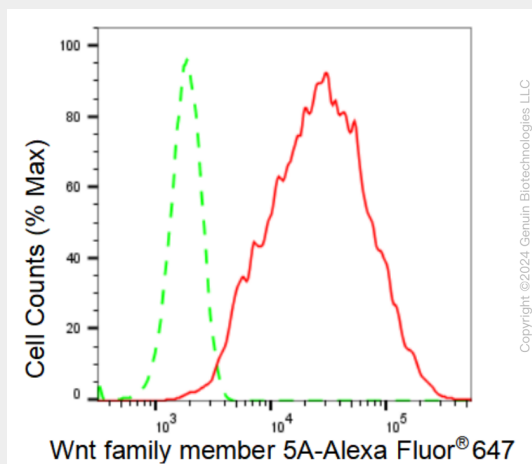


Western blotting analysis using anti-Wnt family member 5A antibody (Cat#AGI1290). Total cell lysates (30 µg) from various cell lines were loaded and separated by SDS-PAGE. The blot was incubated with anti-Wnt family member 5A antibody (Cat#AGI1290, 1:5,000) and HRP-conjugated goat anti-rabbit secondary antibody respectively.

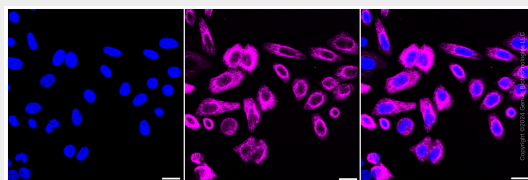


Western blotting analysis using anti-Wnt family member 5A antibody (Cat#AGI1290). Wnt family

member 5A expression in wild type (WT) and Wnt family member 5A shRNA knockdown (KD) HeLa cells with 30 μ g of total cell lysates. β -Tubulin serves as a loading control. The blot was incubated with anti-Wnt family member 5A antibody (Cat#AGI1290, 1:5,000) and HRP-conjugated goat anti-rabbit secondary antibody respectively.



Flow cytometric analysis of Wnt family member 5A expression in HepG2 cells using Wnt family member 5A antibody (Cat#AGI1290, 1:2,000). Green, isotype control; red, Wnt family member 5A.



Immunocytochemical staining of HepG2 cells with Wnt family member 5A antibody (Cat#AGI1290, 1:1,000). Nuclei were stained blue with DAPI; Wnt family member 5A was stained magenta with Alexa Fluor® 647. Images were taken using Leica stellaris 5. Protein abundance based on laser Intensity and smart gain: High. Scale bar: 20 μ m.