

**KD-Validated Anti-GFPT1 Rabbit Monoclonal Antibody**  
**Rabbit monoclonal antibody**  
**Catalog # AGI1298****Specification****KD-Validated Anti-GFPT1 Rabbit Monoclonal Antibody - Product Information**

Application	WB, ICC
Primary Accession	<a href="#">Q06210</a>
Reactivity	Rat, Human, Mouse
Clonality	Monoclonal
Isotype	Rabbit IgG
Calculated MW	Predicted, 79 kDa; observed, 75 kDa KDa
Gene Name	GFPT1
Aliases	GFPT1; Glutamine--Fructose-6-Phosphate Transaminase 1; GFAT1; GFAT; GFPT; GFA; Glutamine--Fructose-6-Phosphate Aminotransferase [Isomerizing] 1; Glutamine:Fructose-6-Phosphate Amidotransferase 1; D-Fructose-6-Phosphate Amidotransferase 1; Hexosephosphate Aminotransferase 1; EC 2.6.1.16; GFAT 1; Glucosamine--Fructose-6-Phosphate Aminotransferase [Isomerizing] 1; Glutamine-Fructose-6-Phosphate Transaminase 1; CMSTA1; GFAT1m; GFPT1L; CMS12; MSLG
Immunogen	A synthesized peptide derived from human GFPT1

**KD-Validated Anti-GFPT1 Rabbit Monoclonal Antibody - Additional Information**

Gene ID	2673
<b>Other Names</b>	Glutamine--fructose-6-phosphate aminotransferase [isomerizing] 1, 2.6.1.16, D-fructose-6-phosphate amidotransferase 1, Glutamine:fructose-6-phosphate amidotransferase 1, GFAT 1, GFAT1, Hexosephosphate aminotransferase 1, GFPT1, GFAT, GFPT

**KD-Validated Anti-GFPT1 Rabbit Monoclonal Antibody - Protein Information****Name** GFPT1**Synonyms** GFAT, GFPT**Function**

Controls the flux of glucose into the hexosamine pathway. Most likely involved in regulating the availability of precursors for N- and O-linked glycosylation of proteins. Regulates the circadian expression of clock genes BMAL1 and CRY1 (By similarity). Has a role in fine tuning the metabolic

fluctuations of cytosolic UDP-GlcNAc and its effects on hyaluronan synthesis that occur during tissue remodeling (PubMed:<a href="http://www.uniprot.org/citations/26887390" target="\_blank">26887390</a>).

#### Tissue Location

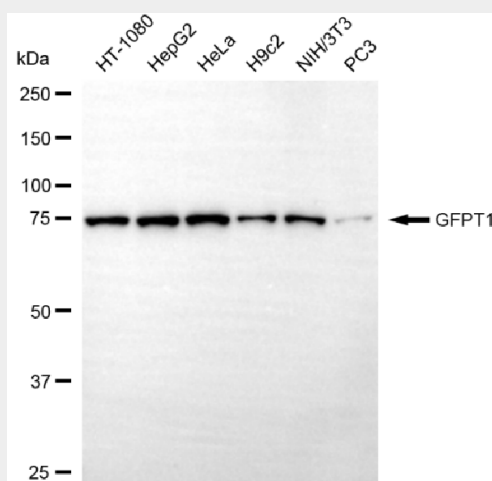
Isoform 1 is predominantly expressed in skeletal muscle. Not expressed in brain. Seems to be selectively expressed in striated muscle.

#### KD-Validated Anti-GFPT1 Rabbit Monoclonal Antibody - Protocols

Provided below are standard protocols that you may find useful for product applications.

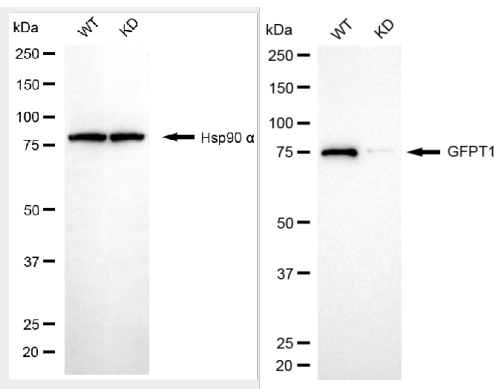
- [Western Blot](#)
- [Blocking Peptides](#)
- [Dot Blot](#)
- [Immunohistochemistry](#)
- [Immunofluorescence](#)
- [Immunoprecipitation](#)
- [Flow Cytometry](#)
- [Cell Culture](#)

#### KD-Validated Anti-GFPT1 Rabbit Monoclonal Antibody - Images



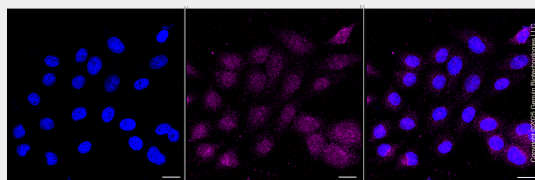
Copyright ©2025 Genuin Biotechnologies LLC

Western blotting analysis using anti-GFPT1 antibody (Cat#AGI1298). Total cell lysates (30 µg) from various cell lines were loaded and separated by SDS-PAGE. The blot was incubated with anti-GFPT1 antibody (Cat#AGI1298, 1:5,000) and HRP-conjugated goat anti-rabbit secondary antibody respectively.



Copyright ©2025 Genuin Biotechnologies LLC

Western blotting analysis using anti-GFPT1 antibody (Cat#AGI1298). GFPT1 expression in wild type (WT) and GFPT1 knockdown (KD) HSHC cells with 20 µg of total cell lysates. Hsp90 α serves as a loading control. The blot was incubated with anti-GFPT1 antibody (Cat#AGI1298, 1:5,000) and HRP-conjugated goat anti-rabbit secondary antibody respectively.



Immunocytochemical staining of HepG2 cells with anti-GFPT1 antibody (Cat#AGI1298, 1:1000). Nuclei were stained blue with DAPI; GFPT1 was stained magenta with Alexa Fluor® 647. Images were taken using Leica stellaris 5. Protein abundance based on laser Intensity and smart gain: Meidum. Scale bar, 20 µm.