

KD-Validated Anti-FLI1 Rabbit Monoclonal Antibody
Rabbit monoclonal antibody
Catalog # AGI1309**Specification**

KD-Validated Anti-FLI1 Rabbit Monoclonal Antibody - Product Information

Application	WB, FC, ICC
Primary Accession	Q01543
Reactivity	Rat, Human, Mouse
Clonality	Monoclonal
Isotype	Rabbit IgG
Calculated MW	Predicted, 51 kDa; observed, 51 kDa kDa
Gene Name	FLI1
Aliases	FLI1; Fli-1 Proto-Oncogene, ETS Transcription Factor; SIC-; EWSR2; FLI-1; Friend Leukemia Integration 1 Transcription Factor; Friend Leukemia Virus Integration 1; Transcription Factor ERGB; Ewing Sarcoma Breakpoint Region 2; Proto-Oncogene Fli-1; BDPLT21
Immunogen	A synthesized peptide derived from human FLI1

KD-Validated Anti-FLI1 Rabbit Monoclonal Antibody - Additional Information

Gene ID	2313
Other Names	
Friend leukemia integration 1 transcription factor, Proto-oncogene Fli-1, Transcription factor ERGB, FLI1	

KD-Validated Anti-FLI1 Rabbit Monoclonal Antibody - Protein Information**Name** FLI1**Function**

Sequence-specific transcriptional activator (PubMed:24100448, PubMed:26316623, PubMed:28255014). Recognizes the DNA sequence 5'- C[CA]GGAAGT-3'.

Cellular Location

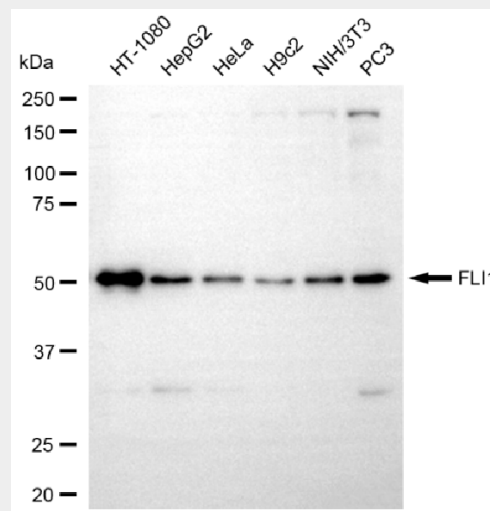
Nucleus.

KD-Validated Anti-FLI1 Rabbit Monoclonal Antibody - Protocols

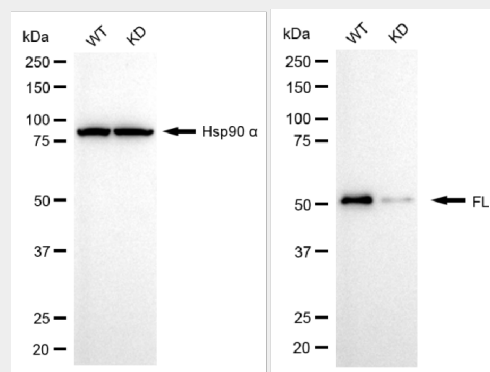
Provided below are standard protocols that you may find useful for product applications.

- [Western Blot](#)
- [Blocking Peptides](#)
- [Dot Blot](#)
- [Immunohistochemistry](#)
- [Immunofluorescence](#)
- [Immunoprecipitation](#)
- [Flow Cytometry](#)
- [Cell Culture](#)

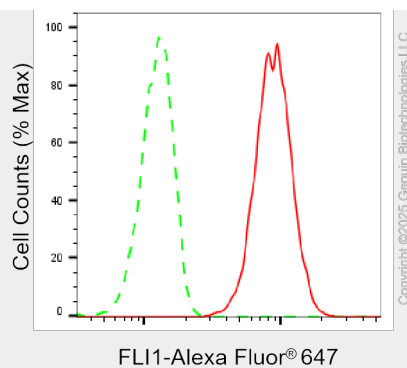
KD-Validated Anti-FLI1 Rabbit Monoclonal Antibody - Images



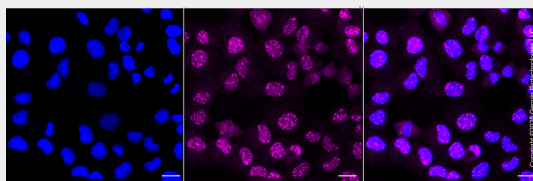
Western blotting analysis using anti-FLI1 antibody (Cat#AGI1309). Total cell lysates (30 µg) from various cell lines were loaded and separated by SDS-PAGE. The blot was incubated with anti-FLI1 antibody (Cat#AGI1309, 1:5,000) and HRP-conjugated goat anti-rabbit secondary antibody respectively.



Western blotting analysis using anti-FLI1 antibody (Cat#AGI1309). FLI1 expression in wild-type (WT) and FLI1 knockdown (KD) HT-1080 cells with 20 µg of total cell lysates. Hsp90 α serves as a loading control. The blot was incubated with anti-FLI1 antibody (Cat#AGI1309, 1:5,000) and HRP-conjugated goat anti-rabbit secondary antibody respectively.



Flow cytometric analysis of FLI1 expression in HT-1080 cells using anti-FLI1 antibody (Cat#AGI1309, 1:2,000). Green, isotype control; red, FLI1.



Immunocytochemical staining of HT-1080 cells with anti-FLI1 antibody (Cat#AGI1309, 1:1,000). Nuclei were stained blue with DAPI; FLI1 was stained magenta with Alexa Fluor® 647. Images were taken using Leica stellaris 5. Protein abundance based on laser Intensity and smart gain: Medium. Scale bar, 20 µm.