

**KD-Validated Anti-Annexin A10 Rabbit Monoclonal Antibody**  
**Rabbit monoclonal antibody**  
**Catalog # AGI1316****Specification****KD-Validated Anti-Annexin A10 Rabbit Monoclonal Antibody - Product Information**

Application	WB, FC, ICC
Primary Accession	<a href="#">O9UJ72</a>
Reactivity	Rat, Human, Mouse
Clonality	Monoclonal
Isotype	Rabbit IgG
Calculated MW	Predicted, 37 kDa, observed, 35 kDa kDa
Gene Name	ANXA10
Aliases	ANXA10; Annexin A10; ANX14; Annexin-10; Annexin 14; Annexin-14
Immunogen	A synthesized peptide derived from human Annexin A10

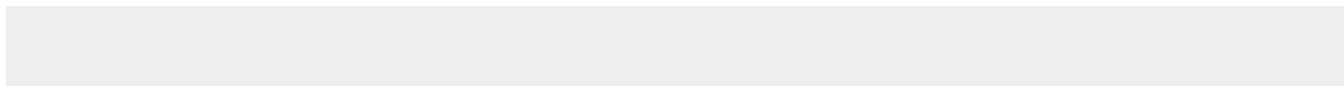
**KD-Validated Anti-Annexin A10 Rabbit Monoclonal Antibody - Additional Information**

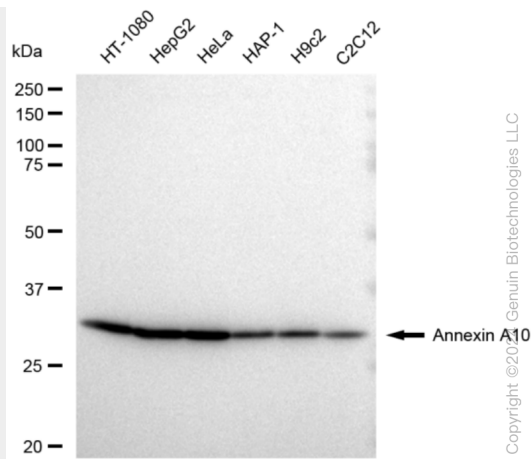
Gene ID	11199
<b>Other Names</b>	
Annexin A10, Annexin-10, Annexin-14, ANXA10, ANX14	

**KD-Validated Anti-Annexin A10 Rabbit Monoclonal Antibody - Protein Information****Name** ANXA10**Synonyms** ANX14**KD-Validated Anti-Annexin A10 Rabbit Monoclonal Antibody - Protocols**

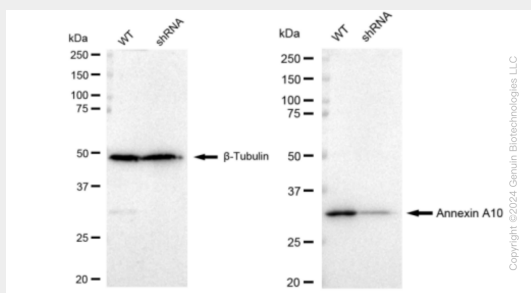
Provided below are standard protocols that you may find useful for product applications.

- [Western Blot](#)
- [Blocking Peptides](#)
- [Dot Blot](#)
- [Immunohistochemistry](#)
- [Immunofluorescence](#)
- [Immunoprecipitation](#)
- [Flow Cytometry](#)
- [Cell Culture](#)

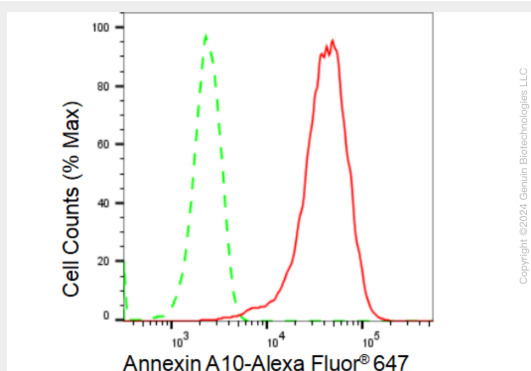
**KD-Validated Anti-Annexin A10 Rabbit Monoclonal Antibody - Images**



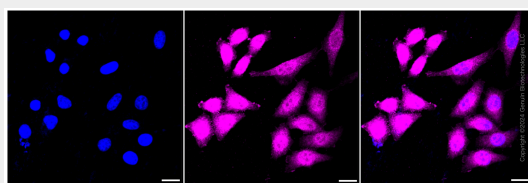
Western blotting analysis using anti-Annexin A10 antibody (Cat#AGI1316). Total cell lysates (30 µg) from various cell lines were loaded and separated by SDS-PAGE. The blot was incubated with anti-Annexin A10 antibody (Cat#AGI1316, 1:5,000) and HRP-conjugated goat anti-rabbit secondary antibody respectively.



Western blotting analysis using anti-Annexin A10 antibody (Cat#AGI1316). Annexin A10 expression in wild type (WT) and Annexin A10 shRNA knockdown (KD) HeLa cells with 30 µg of total cell lysates. β-Tubulin serves as a loading control. The blot was incubated with anti-Annexin A10 antibody (Cat#AGI1316, 1:5,000) and HRP-conjugated goat anti-rabbit secondary antibody respectively.



Flow cytometric analysis of Annexin A10 expression in HepG2 cells using Annexin A10 antibody (Cat#AGI1316, 1:2,000). Green, isotype control; red, Annexin A10.



Immunocytochemical staining of HepG2 cells with Annexin A10 antibody (Cat#AGI1316, 1:1,000). Nuclei were stained blue with DAPI; Annexin A10 was stained magenta with Alexa Fluor® 647. Images were taken using Leica stellaris 5. Protein abundance based on laser Intensity and smart gain: Medium. Scale bar: 20  $\mu$ m.