

KD-Validated Anti-Cell Division Cycle 45 Rabbit Monoclonal Antibody
Rabbit monoclonal antibody
Catalog # AGI1327**Specification****KD-Validated Anti-Cell Division Cycle 45 Rabbit Monoclonal Antibody - Product Information**

Application	WB, FC, ICC
Primary Accession	O75419
Reactivity	Rat, Human, Mouse
Clonality	Monoclonal
Isotype	Rabbit IgG
Calculated MW	Predicted, 66 kDa; observed, 65 kDa KDa
Gene Name	CDC45
Aliases	CDC45; Cell Division Cycle 45; CDC45L2; CDC45L; Cell Division Control Protein 45 Homolog; Human CDC45; PORC-PI-1; CDC45 (Cell Division Cycle 45, S.Cerevisiae, Homolog)-Like; CDC45 Cell Division Cycle 45-Like (S. Cerevisiae); Cell Division Cycle 45 Homolog (S. Cerevisiae); CDC45 Cell Division Cycle 45 Homolog; CDC45 Cell Division Cycle 45-Like; Cell Division Cycle 45 Homolog; Cell Division Cycle 45-Like 2; CDC45-Related Protein; MGORS7
Immunogen	A synthesized peptide derived from human CDC45

KD-Validated Anti-Cell Division Cycle 45 Rabbit Monoclonal Antibody - Additional Information

Gene ID	8318
Other Names	
Cell division control protein 45 homolog, PORC-PI-1, CDC45 (http://www.genenames.org/cgi-bin/gene_symbol_report?hgnc_id=1739) target="_blank">HGNC:1739), CDC45L, CDC45L2	

KD-Validated Anti-Cell Division Cycle 45 Rabbit Monoclonal Antibody - Protein Information**Name** CDC45 ([HGNC:1739](#))**Synonyms** CDC45L, CDC45L2**Function**

Required for initiation of chromosomal DNA replication. Core component of CDC45-MCM-GINS (CMG) helicase, the molecular machine that unwinds template DNA during replication, and around which the replisome is built.

Cellular Location

Nucleus. Chromosome. Note=Associates with chromatin

Tissue Location

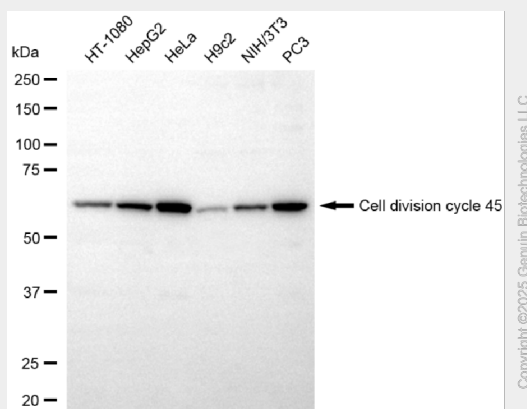
Widely expressed, highest levels are found in adult testis and thymus and in fetal liver

KD-Validated Anti-Cell Division Cycle 45 Rabbit Monoclonal Antibody - Protocols

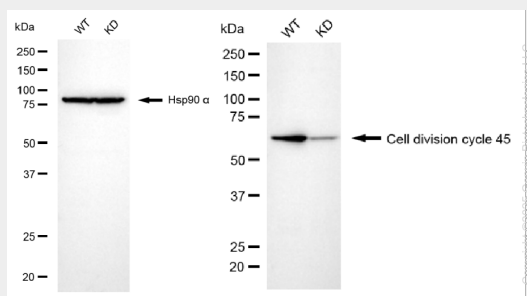
Provided below are standard protocols that you may find useful for product applications.

- [Western Blot](#)
- [Blocking Peptides](#)
- [Dot Blot](#)
- [Immunohistochemistry](#)
- [Immunofluorescence](#)
- [Immunoprecipitation](#)
- [Flow Cytometry](#)
- [Cell Culture](#)

KD-Validated Anti-Cell Division Cycle 45 Rabbit Monoclonal Antibody - Images



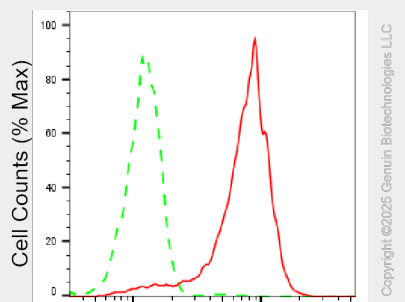
Copyright ©2025 Genulin Biotechnologies LLC



Copyright ©2025 Genulin Biotechnologies LLC

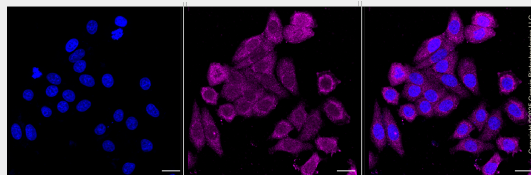
Western blotting analysis using anti-cell division cycle 45 antibody (Cat#61590). Cell division cycle 45 expression in wild type (WT) and cell division cycle 45 (CDC45) knockdown (KD) HSHC cells with 20 µg of total cell lysates. Hsp90 α serves as a loading control. The blot was incubated with anti-cell division cycle 45 antibody (Cat#61590, 1:5,000) and HRP-conjugated goat anti-rabbit secondary antibody (Cat#201, 1:20,000) respectively. Image was developed using NaQ™ ECL Substrate Kit (Cat#716).

anti-rabbit secondary antibody (Cat#201, 1:20,000) respectively. Image was developed using NaQ™ ECL Substrate Kit (Cat#716).



Cell division cycle 45-Alexa Fluor® 647

Flow cytometric analysis of Cell division cycle 45 expression in HepG2 cells using anti-Cell division cycle 45 antibody (Cat#61590, 1:2,000). Green, isotype control; red, Cell division cycle 45.



Immunocytochemical staining of HepG2 cells with anti-Cell division cycle 45 antibody (Cat#61590, 1:1,000). Nuclei were stained blue with DAPI; Cell division cycle 45 was stained magenta with Alexa Fluor® 647. Images were taken using Leica stellaris 5. Protein abundance based on laser Intensity and smart gain: Medium. Scale bar, 20 µm.