

**KD-Validated Anti-DEK Rabbit Monoclonal Antibody**  
**Rabbit monoclonal antibody**  
**Catalog # AGI1338****Specification**

---

**KD-Validated Anti-DEK Rabbit Monoclonal Antibody - Product Information**

Application	WB, FC, ICC
Primary Accession	<a href="#">P35659</a>
Reactivity	Rat, Human
Clonality	Monoclonal
Isotype	Rabbit IgG
Calculated MW	Predicted, 43 kDa , observed, 43 kDa
Gene Name	DEK
Aliases	DEK; DEK Proto-Oncogene; D6S231E; DEK Oncogene (DNA Binding); Protein DEK; DEK Oncogene
Immunogen	A synthesized peptide derived from human DEK

**KD-Validated Anti-DEK Rabbit Monoclonal Antibody - Additional Information**

Gene ID	7913
<b>Other Names</b>	
Protein DEK, DEK	

**KD-Validated Anti-DEK Rabbit Monoclonal Antibody - Protein Information****Name** DEK**Function**

Involved in chromatin organization.

**Cellular Location**

Nucleus. Note=Enriched in regions where chromatin is decondensed or sparse in the interphase nuclei

**Tissue Location**

Ubiquitous. Expressed at relatively high levels.

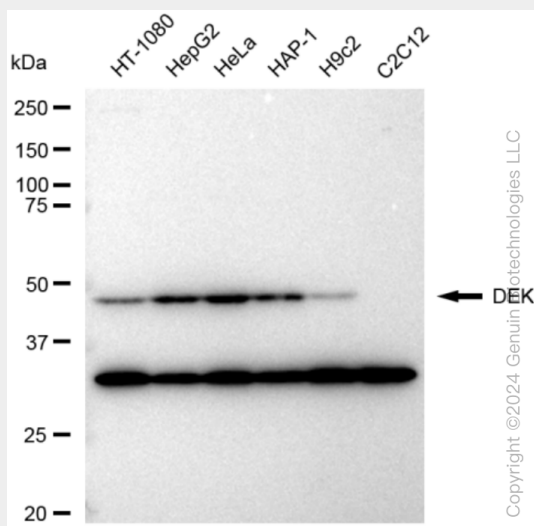
**KD-Validated Anti-DEK Rabbit Monoclonal Antibody - Protocols**

Provided below are standard protocols that you may find useful for product applications.

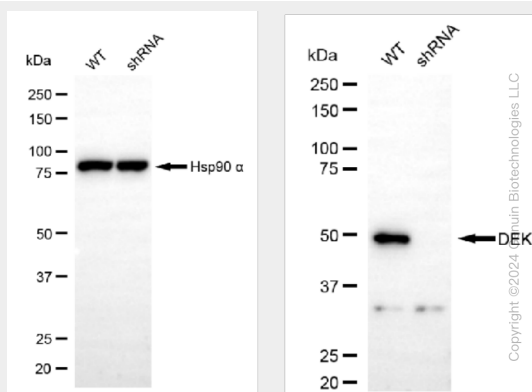
- [Western Blot](#)
- [Blocking Peptides](#)
- [Dot Blot](#)

- [Immunohistochemistry](#)
- [Immunofluorescence](#)
- [Immunoprecipitation](#)
- [Flow Cytometry](#)
- [Cell Culture](#)

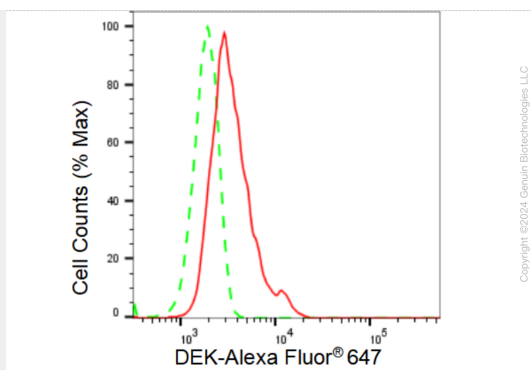
## KD-Validated Anti-DEK Rabbit Monoclonal Antibody - Images



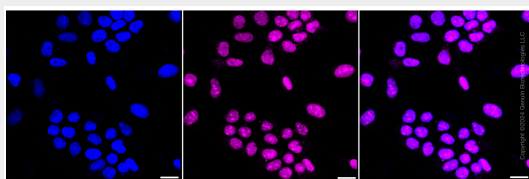
Western blotting analysis using anti-DEK antibody (Cat#AGI1338). Total cell lysates (30 µg) from various cell lines were loaded and separated by SDS-PAGE. The blot was incubated with anti-DEK antibody (Cat#AGI1338, 1:5,000) and HRP-conjugated goat anti-rabbit secondary antibody respectively.



Western blotting analysis using anti-DEK antibody (Cat#AGI1338). DEK expression in wild type (WT) and DEK shRNA knockdown (KD) HeLa cells with 30 µg of total cell lysates. Hsp90 α serves as a loading control. The blot was incubated with anti-DEK antibody (Cat#AGI1338, 1:5,000) and HRP-conjugated goat anti-rabbit secondary antibody respectively.



Flow cytometric analysis of DEK expression in HeLa cells using DEK antibody (Cat#AGI1338, 1:2,000). Green, isotype control; red, DEK.



Immunocytochemical staining of HeLa cells with DEK antibody (Cat#AGI1338, 1:1,000). Nuclei were stained blue with DAPI; DEK was stained magenta with Alexa Fluor® 647. Images were taken using Leica stellaris 5. Protein abundance based on laser Intensity and smart gain: High. Scale bar: 20 µm.