

KD-Validated Anti-Myosin IB Rabbit Monoclonal Antibody
Rabbit monoclonal antibody
Catalog # AGI1343**Specification**

KD-Validated Anti-Myosin IB Rabbit Monoclonal Antibody - Product Information

Application	WB, FC, ICC
Primary Accession	O43795
Reactivity	Human, Mouse
Clonality	Monoclonal
Isotype	Rabbit IgG
Calculated MW	Predicted, 132 kDa; observed, 132 kDa
Gene Name	KDa
Aliases	MYO1B
	MYO1B; Myosin IB; Myr1; Unconventional
	Myosin-Ib; MMI-Alpha; MYH-1c; MMI;
	MYO1B Variant Protein; Myosin-I Alpha;
	Myosin I Alpha
Immunogen	A synthesized peptide derived from human
	MYO1B

KD-Validated Anti-Myosin IB Rabbit Monoclonal Antibody - Additional Information

Gene ID	4430
Other Names	
Unconventional myosin-Ib, MYH-1c, Myosin I alpha, MMI-alpha, MMIa, MYO1B	

KD-Validated Anti-Myosin IB Rabbit Monoclonal Antibody - Protein Information**Name** MYO1B**Function**

Motor protein that may participate in process critical to neuronal development and function such as cell migration, neurite outgrowth and vesicular transport.

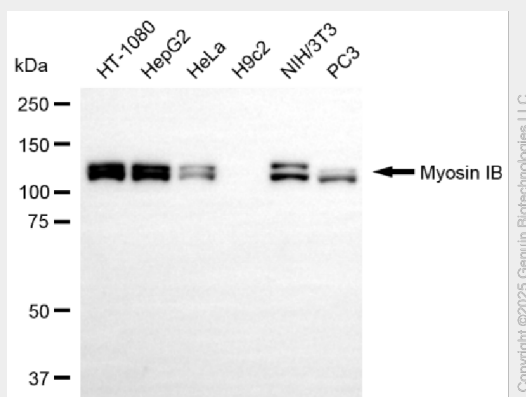
KD-Validated Anti-Myosin IB Rabbit Monoclonal Antibody - Protocols

Provided below are standard protocols that you may find useful for product applications.

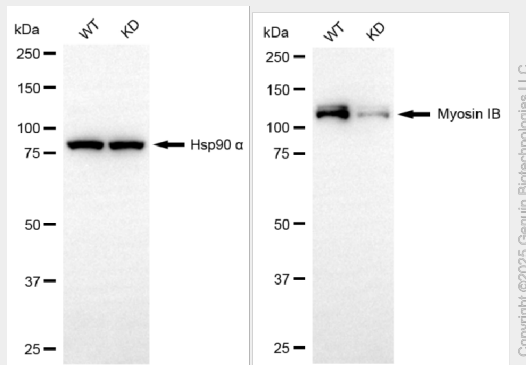
- [Western Blot](#)
- [Blocking Peptides](#)
- [Dot Blot](#)
- [Immunohistochemistry](#)
- [Immunofluorescence](#)
- [Immunoprecipitation](#)
- [Flow Cytometry](#)

- [Cell Culture](#)

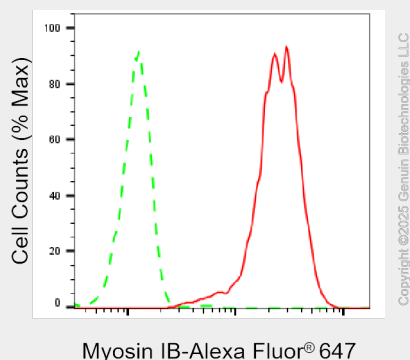
KD-Validated Anti-Myosin IB Rabbit Monoclonal Antibody - Images



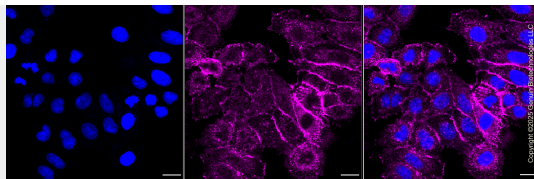
Western blotting analysis using anti-myosin IB antibody (Cat#AGI1343). Total cell lysates (30 µg) from various cell lines were loaded and separated by SDS-PAGE. The blot was incubated with anti-myosin IB antibody (Cat#AGI1343, 1:5,000) and HRP-conjugated goat anti rabbit secondary antibody respectively.



Western blotting analysis using anti-myosin IB antibody (Cat#AGI1343). Myosin IB expression in wild-type (WT) and myosin IB (MYO1B) knockdown (KD) HT-1080 cells with 20 µg of total cell lysates. Hsp90 α serves as a loading control. The blot was incubated with anti-myosin IB antibody (Cat#AGI1343, 1:5,000) and HRP-conjugated goat anti-rabbit secondary antibody respectively.



Flow cytometric analysis of Myosin IB expression in HepG2 cells using anti-Myosin IBc antibody (Cat#AGI1343, 1:2,000). Green, isotype control; red, Myosin IB.



Immunocytochemical staining of HepG2 cells with Myosin IB antibody (Cat#AGI1343, 1:1,000). Nuclei were stained blue with DAPI; Myosin IB was stained magenta with Alexa Fluor® 647. Images were taken using Leica stellaris 5. Protein abundance based on laser Intensity and smart gain: Medium. Scale bar, 20 μ m.